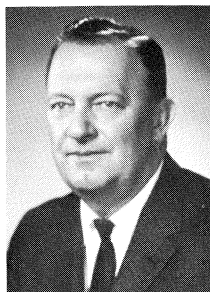


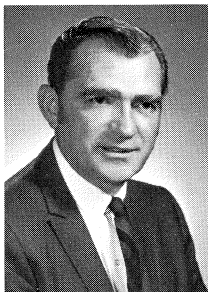
WILLIAM S. BALLENGER III
30th District



DONALD E. BISHOP
16th District

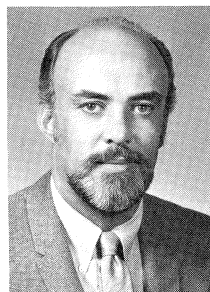


OSCAR E. BOUWSMA
33rd District



JOHN T. BOWMAN
26th District

MEMBERS OF THE SENATE



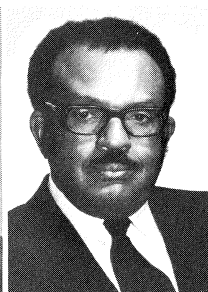
BASIL W. BROWN
6th District



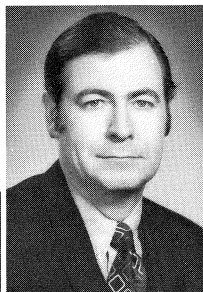
GILBERT E. BURSLEY
18th District



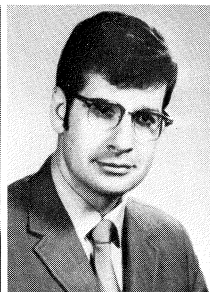
GARY BYKER
23rd District



ARTHUR CARTWRIGHT
5th District



DANIEL S. COOPER
15th District



ROBERT W. DAVIS
37th District

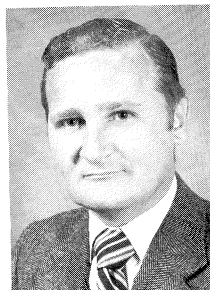
MEMBERS OF THE SENATE



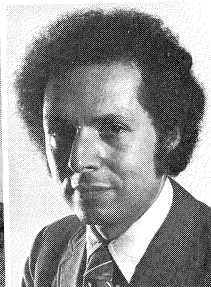
ALVIN J. DE GROW
28th District



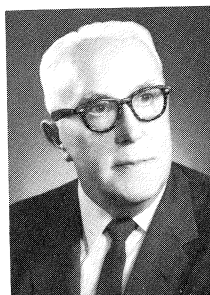
HARRY A. DE MASO
20th District



WILLIAM FAUST
13th District



JACK FAXON
7th District



GEORGE S. FITZGERALD
1st District



JAMES G. FLEMING
19th District



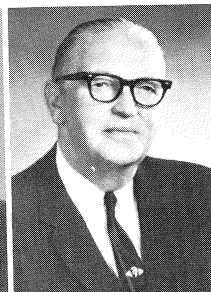
JAMES D. GRAY
27th District



JEROME T. HART
34th District



GARLAND LANE
29th District



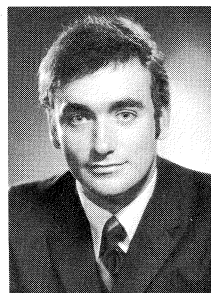
L. HARVEY LODGE
17th District



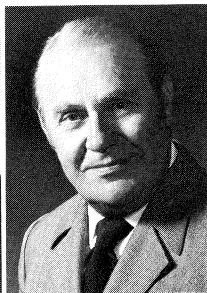
JOSEPH S. MACK
38th District



JOHN E. MC CAULEY
11th District

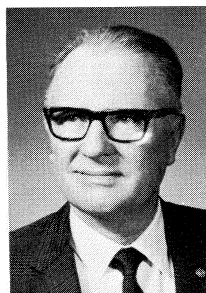


PATRICK H. MC COLLOUGH
10th District

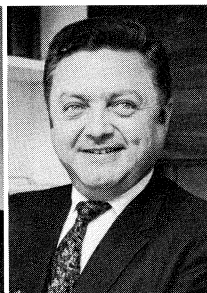


STANLEY NOVAK
9th District

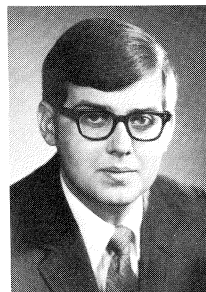
MEMBERS OF THE SENATE



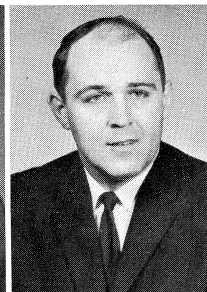
MICHAEL J. O'BRIEN
8th District



PHILIP O. PITTENGER
24th District



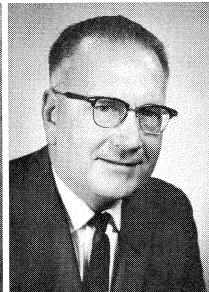
DAVID A. PLAWECKI
12th District



CARL D. PURSELL
14th District

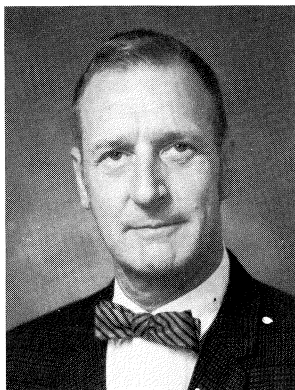


ROBERT RICHARDSON
35th District



GORDON ROCKWELL
25th District

MEMBERS OF THE SENATE



BERYL I. KENYON
Secretary of the Senate



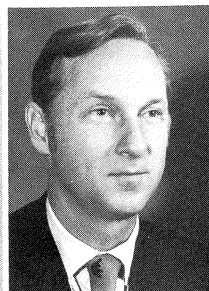
STANLEY F. ROZYCKI
3rd District



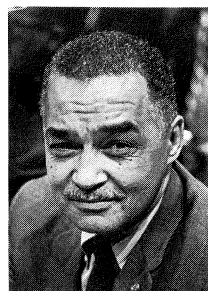
ANTHONY STAMM
21st District



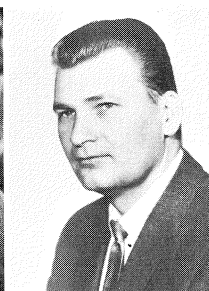
JOHN F. TOEPP
36th District



ROBERT VANDER LAAN
31st District



COLEMAN A. YOUNG
4th District



CHARLES N. YOUNGBLOOD, JR.
2nd District



MILTON ZAAGMAN
32nd District



CHARLES O. ZOLLAR
22nd District

SENATORS

WILLIAM S. BALLENGER III

30th Senatorial District: Counties of Clinton, Eaton (part), Gratiot, Ingham (part), Montcalm (part), and Shiawassee.

Republican, of Delta Township, Eaton County; born March 28, 1941 at Flint; graduate of the Lawrenceville School and Princeton University, magna cum laude, A. B. degree, 1962; married to former Virginia Lee "Bunny" Woodard, 1964; daughter: Josephine Woodard; newspaper reporter and free-lance writer, 1963-65; chairman, Shiawassee County Republican Party, 1966-68; director of research, Republican State Central Committee, 1965-70; chairman, three Shiawassee County Republican Conventions; member and past chairman, Shiawassee County Young Republicans Club, 1966-69; State Board of Control, Michigan Federation of Young Republicans, 1966-69; delegate, 1967 Young Republican National Convention, serving on platform committee; Presbyterian; member of the Princeton Club of Michigan, Sons of the American Revolution, Shiawassee County Historical Society, and Shiawassee River Association; chairman, Senate Republican Campaign Committee, 1971- ; winner of annual "Award of Merit", Michigan Agricultural Conference, 1972; Eagleton Institute of Politics scholar, 1970; member, Board of Governors, National Society of State Legislators, 1973-74; elected to the House of Representatives in 1968; elected to the State Senate in 1970.

DONALD E. BISHOP

16th Senatorial District: Oakland County (part).

Republican, of Rochester; born February 27, 1933 at Almont; graduate of Almont High School, 1951; graduate of Oberlin College, B.A. degree in political science and Detroit College of Law, J.D. degree; attorney; served in U.S. Army, 1955-57; married in 1955; children: Rebecca, Susan, Judy, Martha and Michael; member of Congregational Church; Oakland County and Michigan State Bar Associations, elected to the House of Representatives in 1966 and 1968; elected to the State Senate in 1970.

OSCAR E. BOUWSMA

33rd Senatorial District: Counties of Lake, Manistee (part), Mason, Muskegon and Oceana.

Republican, of Muskegon; born August 15, 1921 at Muskegon; graduate of Muskegon Senior High School and attended Ohio State University; married; children: Mary Kathleen and Edward Oscar; member of the Faith Reformed Church; labor mediator; served in U.S. Army 3 years, recipient of the Bronze Star; honorary member U.S. Naval Reserve; 2 years as Justice of the Peace; former State Representative, 2 terms; member of Holton American Legion; V.F.W. Don Rea Post; Evening Y's Men; Polish Falcons; Muskegon Press Club; National Rifle Association; Fraternal Order of Eagles; Honorable Order of Kentucky Colonels; elected to the State Senate in 1966 and 1970.

JOHN T. BOWMAN

26th Senatorial District: Counties of Macomb (part) and St. Clair (part).

Democrat, of Roseville; born July 19, 1921 at Monterey, Tennessee; high school graduate; married; daughter, Darryl Joyce (Martin); occupation, public relations; veteran of World War II, U.S. Navy; Justice of the Peace, 1939-43; Baptist; member of AMVETS, American Legion, F&A.M. and Shrine; elected to four terms in the House of Representatives, 1954-62; elected to the State Senate in 1962 and each succeeding term.

BASIL W. BROWN

6th Senatorial District: County of Wayne (part).

Democrat, of Detroit; born March 20, 1927 at Vandalia, Michigan; graduate of Battle Creek Central High School, Western Michigan University, A.B. degree and University of Michigan, LL.B. and J.D. degrees; married to the former Erma Jeanne Seeger, June 8, 1950; daughter, Lisa Denise; served in U.S. Navy and received three decorations; attorney; member of the Episcopal Church; elected to the State Senate in 1956 and to each succeeding session.

GILBERT E. BURSLEY

18th Senatorial District: Counties of Lenawee (part) and Washtenaw.

Republican, of Ann Arbor; born February 28, 1913 at Ann Arbor; graduate of the University of Michigan, A.B., 1934; Harvard Business School, M.B.A., 1936; post graduate work in international relations, George Washington University, 1953-54; graduate, Command and General Staff School, 1943; Army Industrial College, 1949; Armed Forces Information School, 1949; Army Psychological Warfare School, 1952; Armed Forces Special Weapons, 1953; married to Vivette Mumtaz in 1949; son, Philip II; service in World War II, three campaign stars, army commendation ribbon; service during Korean War, final rank lieutenant colonel, U.S. Army; National Headquarters, Selective Service System, 1940-41; military attache, Istanbul, Turkey, 1946-49; Joint U.S. Military Mission, Athens, Greece, 1949-52; Army Psychological Warfare Headquarters, Washington, 1953; United National Truce Supervision Organization in Palestine, Senior Military Advisor Israel-Jordan and Israel-Egypt Mixed Armistice Commissions, 1954; American consul and public affairs officer in charge of U.S. Information Agency Program in the Belgian Congo, French Equatorial Africa, Ruanda Urundi, Cameroons and Angola, 1955-57; Episcopalian; member of the Sons of the American Revolution, president, Washtenaw chapter; governor, Michigan Society of Mayflower Descendants, 1965-71; director, Michigan Partners of the Americas; member of Rotary, Elks, Veterans of Foreign Wars, American Legion, Economic Club of Detroit, Ann Arbor Chamber of Commerce, Harvard Business School Club of Detroit, The University of Michigan Alumni Club, International Platform Association, National Aero Club, American College Public Relations Association, American Alumni Council, Society of American Magicians, Foreign Policy Association and the YMCA; elected to the House of Representatives in 1960 and 1962 and to the State Senate in 1964 and to each succeeding session.

GARY BYKER

23rd Senatorial District: Counties of Allegan, Barry (part), Ottawa and Van Buren.

Republican, of Hudsonville; born November 27, 1920 at Alvord, Iowa, graduate of Calvin College; did graduate work at Michigan State University in public opinion and propaganda; married in 1944 to the former Henrietta Blankespoor; children: Mrs. Bruce Deckinga, Gaylen, Dave, Harlan, Carl and Gretchen; owner of Byker Realty Co.; served four and one half years in World War II, nearly two and one half years with 34th Infantry Division, holds Purple Heart and the Silver Star; former member, Ottawa County Board of Supervisors; treasurer and secretary, Hudsonville Christian School Board, six years; past president, Hudsonville Chamber of Commerce; chairman, Hudsonville City Planning Commission; chairman, Ottawa County Youth Home; member of the Hillcrest Christian Reformed Church, Farm Bureau and former member City Zoning Board of Appeals; elected to the State Senate to fill a vacancy on February 19, 1968; re-elected in 1970.

member, Michigan Social Welfare Commission; former teacher, University of Detroit Law School; delegate, Council of Social Agencies and American Association of Social Workers; former member of several law, welfare and Democratic committees; Roman Catholic; member of Detroit, Michigan and American Bar Associations; Federal Bar Club; Michigan Aero and Space Club; Knights of Columbus; Elks; Holy Cross Varsity Club; Gamma Eta Gamma (law fraternity); University of Detroit Law Alumni Association Club; Catholic Lawyers Club; National Law Club; Detroit Press Club; Bayview Yacht Club; Chamber of Commerce; Knights of Equity; National Welfare and Pension Fund Conference; International Platform Association; elected to the State Senate in 1964, 1966 and 1970.

JAMES G. FLEMING

19th Senatorial District: Counties of Jackson, Hillsdale (part), and Lenawee (part).

Republican of Jackson; born November 5, 1929, at Jackson, Michigan; Graduate—St. John's High School, Jackson; Jackson Community College, Associate in Arts degree and University of Detroit School of Law, Doctor of Jurisprudence degree; also, Northwestern University, Short Course for Prosecutors; Three Children: Amy Theresa, Kelly Ann and James B.; Senior Partner, Jackson Law Firm of Fleming, Fleming and Treciak; Member, Queen of Miraculous Medal Roman Catholic Church and of the Country Club of Jackson; Prosecuting Attorney, Jackson County, 1960-66; Chief Assistant Prosecutor, 1958-60; Jackson City Commissioner, 1954-58; President, Michigan Prosecuting Attorneys' Association 1965-66 and Member, Board of Directors, 1962-66; Member, Jackson County, Michigan State and American Bar Associations and of National District Attorneys Association, formerly member American Trial Lawyers Association, Southern Michigan Law Enforcement Association, State Bar Association Criminal Jurisprudence Committee, Michigan Human Resources Council—Crime and Delinquency Division; Member University of Detroit Law School Alumni Association and Delta Theta Phi Law Fraternity; Elected to State Senate in 1966, re-elected 1970; Chairman, Senate Highways Committee (1967-); Vice Chairman, Senate Judiciary Committee (1967-) and Vice Chairman, Senate Labor Committee (1969-); Member, Senate Committee on Committees (1969-); Formerly Member, Senate Corporations Committee (1967-68); Chairman, Special Senate Crime and Riot Investigating Committee (1968) and Vice Chairman, Special Senate Committee on Campus Disorders (1969-70).

JAMES D. GRAY

27th Senatorial District: Counties of Macomb (part) and St. Clair (part).

Democrat, of Warren; born at Providence, Kentucky; graduated from Lincoln High School, Warren; Michigan State University; married; children: Sharon, Linda, James David H, John Daniel and Joseph Darryl; City Clerk, City of Warren (1960-1966); Trustee, Fitzgerald School Board (Warren); Proprietor of General Insurance Agency; Precinct Delegate; former School Teacher 1955-1961; former Youth Director; past President, Macomb County Clerks Association; past President, Neigebauer P.T.A.; Michigan Municipal Clerks Association; International Institute of Municipal Clerks; United Democrats of Warren; Charter member Warren Optimists; Boy Scouts of America; Director of Recreation Program in Hazel Park (1952-1953); former member Michigan Insurance Agents Association; elected to the State Senate in 1966. Reelected in 1970 by the largest margin of any Michigan State Senator.

JEROME T. HART

34th Senatorial District: Counties of Bay (part), and Saginaw (part).

Democrat of Saginaw; born July 23, 1932 at Saginaw; graduate of St. Andrew High School, Saginaw and took correspondence courses in accounting through LaSalle Ex-

tension University; secretary treasurer, Quality Seal Oil Co., 1954-60; owner, Tiny Town Infant & Children Clothing, 1960; secretary treasurer, Catholic Cemetery Commission, 1960-62; treasurer, Saginaw County Democratic Committee, 1956-60; president, Saginaw County Democratic Club, 1958-60; member, Democratic State Central Committee, 1959-63; 8th Congressional District Chairman, 1962-64; executive assistant to the State Treasurer, 1962-64; member of St. Andrew Roman Catholic Church and Knights of Columbus; elected to the State Senate in 1964, 1966 and 1970 where he serves as a member of the Appropriations Committee; serves on Sub-Committees on Social Services, Mental Health, School Aid, Commerce-Regulatory; member, Michigan Alcohol & Addiction Association; member, Welfare Study Commission; appointed to Governors Action Committee on Corrections and Governors Task Force on Criminal Justice Management.

GARLAND LANE

29th Senatorial District: County of Genesee (part).

Democrat, of Flint; born March 28, 1919 at Flint; graduate of Flint Central High School; honorary law degree, Eastern Michigan University, 1969; has one son, Garland Jr., served in the U.S. Army April 15, 1941 to February 2, 1946; engaged in the insurance business; Lutheran; member of Veterans of Foreign Wars, American Legion, Disabled American Veterans, 125th Infantry Association of World War II, Military Order of the Purple Heart and Michigan Insurance Association; elected to the State Senate in 1948 and to each succeeding session.

L. HARVEY LODGE

17th Senatorial District: Counties of Lapeer and Oakland (part).

Republican, of Independence Township, Waterford, Michigan; born November 8, 1902 at Milford; graduate of Milford High School, 1921; University of Michigan, A.B. degree, 1928; University of Michigan, LL.B. degree, 1930; married to the former Rhea Ewald Vietor; attorney; served as assistant Attorney General, 1936; assistant, chief assistant and prosecuting attorney of Oakland County, 1939-47; Methodist; former member, Pontiac Housing Commission; former director, Oakland County Branch of Michigan Children's Aid Society; twice president, Oakland County Lincoln Republican Club; life member, Elks, No. 810, Pontiac; 20 year monarch, Lions honorary member, Lake Orion; Pontiac Lodge No. 19, Knights of Pythias; member of Michigan Bar Association, American Bar Association, Oakland County Bar Association, American Trial Lawyers, Milford F.&A.M. No. 165, Pontiac High Twelve, Oakland Scottish Rite Club, Moslem Shrine, American Judicature Society and the Academy of Political and Social Science; elected to the House of Representatives in 1946 and to the State Senate in 1956, 1958, 1966 and 1970.

JOSEPH S. MACK

38th Senatorial District: Counties of Alger (part), Baraga, Dickinson, Gogebic, Houghton, Iron, Keweenaw, Marquette, Menominee and Ontonagon.

Democrat, of Upper Peninsula.

JOHN E. McCAULEY

11th Senatorial District: Counties of Monroe and Wayne (part).

Democrat, of Gross Ile; born April 28, 1924 at Delaware, Ohio; attended Michigan State University and Wayne State University, LL.B. and J.D. degrees; married in 1946 to Jeanette E. Poet; son, Patrick Brian; councilman, city of Wyandotte, six years; mayor, city of Wyandotte, four years; chairman, Wayne County Board of Supervisors; delegate

to Constitutional Convention; attorney; served in the U.S. Army, 1942-45; Presbyterian; member of American Legion, Veterans of Foreign Wars, Kiwanis Club, Disabled American Veterans, Military Order of the Purple Heart, Southeastern Chapter, Chamber of Commerce, and the Michigan Bar Association; elected to the State Senate in 1964 and to each succeeding session.

PATRICK H. MCCOLLOUGH

10th Senatorial District: County of Wayne (part).

Democrat, of Dearborn; born May 19, 1942 at Detroit; graduate of Fordson High School, Henry Ford Community College, A.A., Michigan State University, B.A. University of Michigan, M.A., and Detroit College of Law, J.D.; attorney and teacher; executive board, 16th District Democratic Organization, former president, Henry Ford and Michigan State Young Democrats; former national committeeman, Young Democrats of America; precinct delegate; member University of Michigan Alumni Association of Dearborn; member of Detroit Institute of Arts Founder's Society, Dearborn Pioneers, Goodfellows, Senators Clubs, Haber Commission, Dearborn-Downriver Democratic Clubs, Community Task Force to Combat Drug Abuse, Dearborn Community Health Council, Dearborn Federation of Teachers Local 681, Michigan Bar Association, Detroit and Dearborn Bar Associations, Delta Theta Phi (legal fraternity), Blue Key (national honorary fraternity), Lambda Chi Alpha Alumni Association, Littlefield Boulevard United Presbyterian Church and the Men of Littlefield Church Group; elected to the State Senate in 1970; appointed by Governor, Criminal Justice Commission, 1973.

STANLEY NOVAK

9th Senatorial District: County of Wayne (part).

Democrat, of Detroit; born March 9, 1911 at Salemsville, Pennsylvania; attended public schools in Pennsylvania; married; sons: Stanley Jay and Terry Lee; former UAW-CIO international representative and business agent of the boilermakers union; veteran of World War II, U.S. Navy, South Pacific and Asiatic Theatres; Catholic; member of Elks, Veterans of Foreign Wars, AMVETS, NAACP and Polish National Alliance; Crisis Club of Detroit; elected to the State Senate in 1954 and to each succeeding session.

MICHAEL J. O'BRIEN

8th Senatorial District: County of Wayne (part).

Democrat, of Detroit; born July 30, 1907, at Detroit; attended parochial and public schools in Detroit; children: Ruth (Wright) of Garden City, Mary Ellen (Taub) of Livonia and Michael J. Jr., Detroit; five grandchildren; retired assistant superintendent, Department of Public Works; Catholic; member of Detroit Yacht Club and the 17th District Congressional Democratic organization; awarded the Michigan Agricultural Conference Award in recognition of distinguished services; as well as awards from the Michigan Osteopathic Physicians and Surgeons, the Michigan Hospital Association ("Statesmanship Award"), Michigan Society of Professional Engineers' Good Government Award, Certificate of Appreciation from the Consulting Engineers Council of Michigan, Legislative Service Award from the Michigan Retail Hardware Association, and an award from the County Road Association of Michigan for his dedication and contribution to the cause of better highways for the people of Michigan; elected to each session of the House of Representatives from 1940-1962 and to the State Senate in 1964, 1966, and 1970; elected Assistant Democratic leader, 1970.

PHILIP O. PITTENGER

24th Senatorial District: County of Ingham (part).

Republican, of Lansing; born August 9, 1929 at Worthington, Minnesota; graduate of Hudson (Michigan) High School; received certificate from Institute of Organizational Management, Michigan State University and Institute of Practical Partisan Politics, University of Michigan; married in 1955; daughters: Pam and Penni; former executive assistant to Gov. Geo. Romney, former chief deputy director, Michigan Department of Licensing and Regulation and former deputy commissioner, Michigan Corporation and Securities Commission; served in the Michigan National Guard; board of directors, United Negro College Fund; former president, Ingham County Young Republican Club; Former president, North School PTA; named Outstanding Young Man of the Year by Lansing Jr. Chamber of Commerce, 1965; member of Father John's Fund, Old Newsboys Association, Association, Catholic Men's Club, Elks Lodge 196, Lansing Downtown Coaches' Club, Polish Falcons Nest #652, and Church of the Resurrection Catholic Church; elected to the House of Representatives in 1966 and 1968; elected to the State Senate in 1970.

DAVID A. PLAWECKI

12th Senatorial District: County of Wayne (part).

Democrat, of Dearborn Heights; born November 8, 1947 at Detroit; graduated Dearborn Divine Child High School and General Motors Institute, B.S. in Mechanical Engineering; married to former Linda R. Chantres, 1970; member of Jaycees, Goodfellows, Polish Legion of American Veterans, Knights of Columbus, G.M.I. Alumni Association, Kingswood-Crestwood Civic Association, Taylor Democratic Club, Allen Park Democratic Club, Southgate Democratic Club, Dearborn Democratic Club, member and past Vice Chairman Dearborn Heights Democratic Club; Executive Board member and past treasurer 15th District Democratic Organization; Executive Board member 16th District Democratic Organization, 17th District Democratic Organization; Roman Catholic Church; elected to the Michigan State Senate in 1970.

CARL D. PURSELL

14th Senatorial District: Counties of Oakland (part), and Wayne (part).

Republican, of Plymouth; born December 19, 1932 at Imlay City; graduate of Plymouth High School; Eastern Michigan University, A.B. and M.A. degrees; married in 1956; children: Philip, Mark and Kathy; Captain, U. S. Army; served on Wayne County Board of Commissioners, 1969-70; former president, Plymouth Chamber of Commerce; Outstanding "Young Man of the Year", 1965; past member, Jaycees; member, Kiwanis; elected to the State Senate in 1970, selected by leadership and press as "Outstanding Freshman Senator" for 1970-71.

ROBERT RICHARDSON

35th Senatorial District: Counties of Alcona, Arenac, Bay (part), Gladwin, Iosco, Midland, Ogemaw, Oscoda, Saginaw (part) and Tuscola (part).

Republican, of Saginaw; born April 20, 1926 at Saginaw; graduate of the University of Michigan, A.B. degree in 1950 and LL.B. degree in 1951; attorney; married to the former Jean Cummings in 1960; children: Robert L. III, Thomas Matthew and Charles Cummings; administrative assistant to former Congressman Alvin M. Bentley, 1953-56; assistant U.S. Attorney, 1957-58; Saginaw County Prosecuting Attorney, 1959-63; civil counsel, Saginaw County, 1963-64; U.S. Army, 1944-46; Methodist; member of Saginaw County and Michigan Bar Associations; State Bar of Michigan; District of Columbia and U. S. Supreme Court Bar Associations; Saginaw Lodge No. 77, F.&A.M.; Downtown Kiwanis Club; V.F.W. No. 7302; American Legion Post No. 165; elected to the State Senate in 1964 and to each succeeding session.

GORDON ROCKWELL

25th Senatorial District: Counties of Genesee (part) and Livingston.

Republican, of Mt. Morris; born February 23, 1915 at Flint; attended Mt. Morris High School and Flint Junior College; married; children: Jill and Jan; retail hardware dealer; veteran of World War II, three years; held office in the township, on the board of education and State School District Reorganization; Chairman Lake Erie Legislative Conference; Methodist; member of Masonic Lodge; Knight Templars; Lions Club; past president, PTA; Michigan United Fund; American Legion; Red Cross Board of Directors; Red Feather Fund of Flint and Genesee County; past president, Mt. Morris Businessmen's Club; Chamber of Commerce; Genesee County Visiting Nurses Association; Genesee County Farm Bureau; chosen Conservationist of the Year in 1968 by Michigan United Conservation Clubs; elected to the House of Representatives in 1960 to fill a vacancy, for the full term, and re-elected in 1962; elected to the State Senate in 1966 and 1970.

STANLEY F. ROZYCKI

3rd Senatorial District: County of Wayne (part).

Democrat, of Detroit; born April 12, 1908 at Detroit; attended University of Detroit High School; St. Mary High School, Orchard Lake; Wayne State University and University of Detroit; married in 1934; sons: Stanley, Ronald, Gary and Donald; president, Fireside Printing and Publishing Company; chairman, 1st Congressional Democratic Party organization, 1950-54; member of St. Bartholomew's Catholic Church Parish; Knights of Columbus; Polish National Alliance; Detroit Typographical Union and numerous civic and social organizations; elected to the State Senate to fill a vacancy on May 9, 1955, re-elected in 1956 and to each succeeding session.

ANTHONY STAMM

21st Senatorial District: Counties of Barry (part), Kalamazoo and St. Joseph (part).

Republican, of Kalamazoo; born July 3, 1912 at Kalamazoo; attended Kalamazoo Central High School; Parsons Business School; Western Michigan University, B.S. degree in business education and M.A. degree in political science; married Miriam Jean Wise, November 4, 1955; Kalamazoo County Clerk, 1941-67 and instructor, Political Science Department, Western Michigan University; delegate to Constitutional Convention, 1961-62; past president and member, Southwestern Michigan Chapter of American Society of Public Administration; life member, Michigan State Association of County Clerks; former chairman, Michigan Federation of Young Republicans; delegate, 1970 White House Conference on Children; charter member, Kalamazoo County Kennel Club; past president, Scottish Terrier Club of America; delegate, American Kennel Club; member of Municipal Finance Officer's Association and Executive Board of the Republican State Central Committee of Michigan; first elected to the State Senate in 1966 and re-elected in 1970.

JOHN F. TOEPP

36th Senatorial District: Counties of Antrim (part), Benzie, Clare, Crawford, Grand Traverse, Isabella, Kalkaska, Leelanau, Manistee (part), Mecosta, Missaukee, Newaygo (part), Osceola, Roscommon and Wexford.

Republican, of Cadillac; born September 25, 1920, at Mansfield, Ohio; graduate of St. Augustine High School, Kalamazoo; Mahar Business College; attended Western Michigan University; married former Catherine Boynton; children: William, Douglas, Michael, Bonnie, Theresa, Tickey, Sandra; Broadcaster of Cadillac High School football and basketball and Michigan High School Basketball Finals for Radio Station WATT and Paul Bunyan Network; member: Cadillac Kiwanis, Wexford County

Safety Commission, State Fraternal Order Police, Michigan Bear Hunters Board of Directors, Michigan Sports Sages; former: State Representative (Wexford-Manistee, 1963-64), professional basketball announcer for National Basketball League, Public Relations Director of State GOP Central Committee, Executive Aide for Michigan Senate Republicans, Executive Manager of Cadillac Area Chamber of Commerce, Chairman of Wexford County Cancer Drives; elected to the Senate in 1966, re-elected in 1970.

Member of Senate Appropriations Committee, Joint Capital Outlay Committee, Legislative Fiscal Agency Board of Governors, National Council of State Governments, Senate Republican Campaign Committee, Chairman of Senate Republican Press Committee, elected Senate Republican Majority Whip in 1968, elected Senate Republican Majority Floor Leader in 1970, 1971, and again in 1973 for another two year term.

ROBERT VANDERLAAN

31st Senatorial District: Counties of Ionia, Kent (part), Montcalm (part) and Newaygo (part).

Republican, of Kentwood; born June 4, 1930 at Grand Rapids; graduate of Calvin College, A.B. degree; University of Michigan, M.A. degree; married to the former Mildred Bouma of Edgerton, Minnesota; children: Linda Beth and Robert J.; taught history and government at South Christian High School for seven years; former part-time instructor at Calvin College; former clerk, trustee and supervisor of Paris Township, now the city of Kentwood; member of the Millbrook Christian Reformed Church; elected Senate Majority Leader in June, 1970, and January, 1973; member of the Legislative Council, chairman, Senate Business Committee, vice-chairman, and Senate Committee on Committees, chairman; member of Executive Committee of the National Conference of State Legislative Leaders, 1972 and 1973; appointed to the Inter-American Affairs Advisory Commission of the United States State Department by former U.S. Secretary of State William P. Rogers, 1972-73; member of the Kent County Conservation League, Kent County Council of Alcoholism, Lotus Club, University of Michigan Alumni Club; elected to the State Senate in 1962 and to each succeeding session.

COLEMAN A. YOUNG

4th Senatorial District: County of Wayne (part).

Democrat, of Detroit; born May 24, 1918 at Tuscaloosa, Alabama; graduate of Detroit Eastern High School; veteran of World War II, second lieutenant, U.S. Army Air Force; delegate to the Constitutional Convention; Baptist; member of NAACP and Ferndale Cooperative Credit Union; elected to the State Senate in 1964, 1966, and 1970.

CHARLES N. YOUNGBLOOD, JR.

2nd Senatorial District: County of Wayne (part).

Democrat, of Detroit; born April 24, 1932 in Detroit; attended Denby High School and Wayne State University; married; children: Victoria Ann, Donna Marie, Michael Charles, Cynthia Ann and Cathleen Delores; served in the U.S. Navy five years; delegate to the Constitutional Convention; board of directors, Grand Community Hospital; full commander, Michigan Naval Militia; former deputy sheriff of Wayne County and investigator of Wayne County Road Commission; Catholic; member of Our Lady of Good Counsel Dad's Club; Knights of Columbus; D.A.V. Post 46; AMVETS Post 57; Von Steuben Property Owner's Association; AFL-CIO; elected to the State Senate in 1962, and to each succeeding session.

MILTON ZAAGMAN

32nd Senatorial District: County of Kent (part).

Republican, of Grand Rapids; born March 28, 1926 at Grand Rapids; attended Calvin College, Wayne State University, degree in mortuary science; married; 4 children; mortician; served in the U.S. Navy, World War II; served on the Kent County Board of Supervisors, three terms; director, Kent County Library; former member, Grand Rapids Junior Chamber of Commerce; board of directors, Child Guidance Clinic; Citizens Advisory Council to the Juvenile Court; member of Christian Reformed Church; Furniture City Post 258, American Legion; former member, National Association of County Officials; board of directors, Wayne State University Alumni Association for Western Michigan; Michigan Funeral Directors Association; elected to the State Senate in 1962, and to each succeeding session.

CHARLES O. ZOLLAR

22nd Senatorial District: Counties of Berrien, Cass and St. Joseph (part).

Republican, of Benton Harbor; born January 6, 1915 at Chicago, Illinois; attended Michigan State University through continuing education courses; married; daughters, Robin and Michele; owner Zollar Farms (fruit growers); president, Aircraft Components, Inc. (aircraft parts); president, Riverside Enterprises, Inc. (real estate); president, Zollar Nurseries, Inc. (fruit trees and plant propagation); veteran of World War II, aviation instructor; Lutheran; member of Elks, American Legion, Moose, Fraternal Order of Police, Farm Bureau and Rotary; elected to the State Senate in 1964 and to each succeeding session.