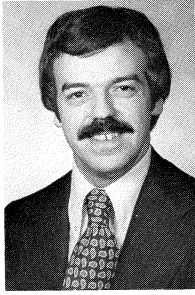
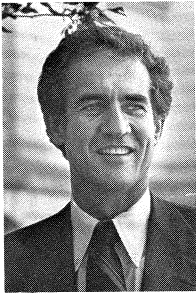




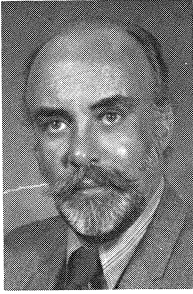
RICHARD J. ALLEN
30th District



PHILLIP J. ARTHURHULTZ
33rd District



DONALD E. BISHOP
8th District



BASIL W. BROWN
3rd District

MEMBERS OF THE SENATE



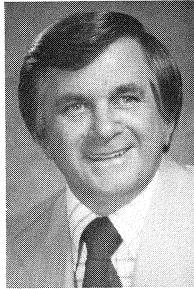
GARY G. CORBIN
25th District



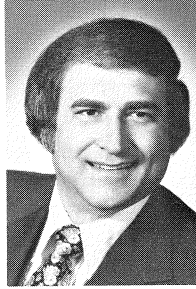
ALVIN J. DeGROW
28th District



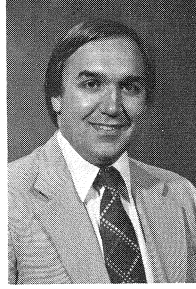
HARRY A. DeMASO
20th District



JAMES DeSANA
11th District



GILBERT J. DINELLO
26th District

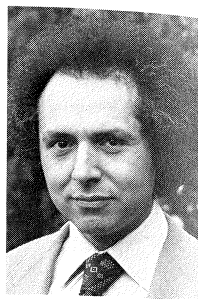


JOHN M. ENGLER
36th District

MEMBERS OF THE SENATE



WILLIAM FAUST
13th District



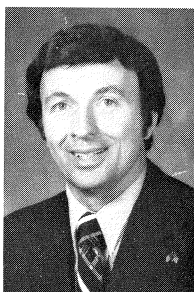
JACK FAXON
7th District



ED FREDRICKS
23rd District



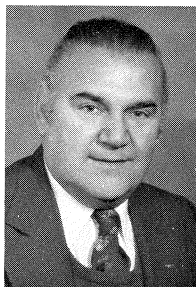
HARRY GAST
22nd District



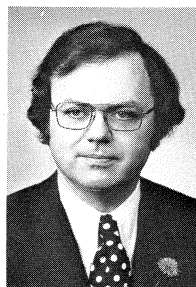
R. ROBERT GEAKE
14th District



THOMAS GUASTELLO
9th District



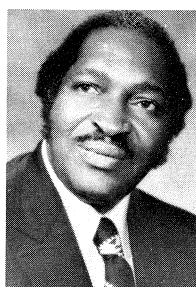
GEORGE ZAVEN HART
10th District



JEROME T. HART
34th District



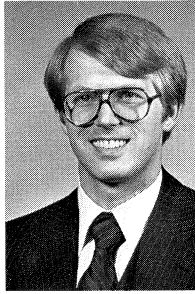
JOHN C. HERTEL
2nd District



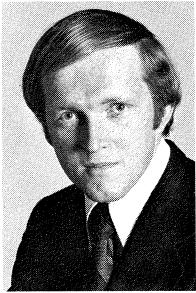
DAVID S. HOLMES, JR.
4th District



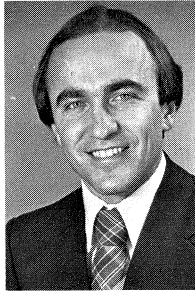
BILL S. HUFFMAN
16th District



MITCH IRWIN
37th District

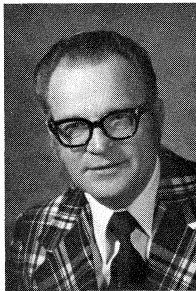


KERRY KAMMER
17th District

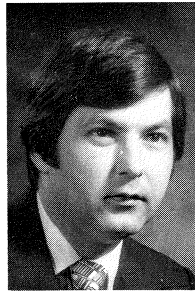


JOHN FRANCIS KELLY
1st District

MEMBERS OF THE SENATE



JOSEPH S. MACK
38th District



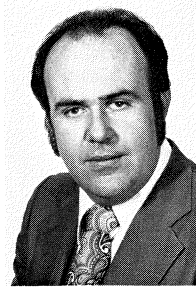
ART MILLER, JR.
27th District



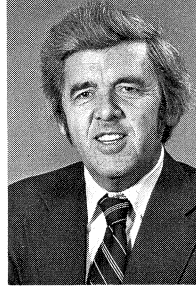
STEPHEN V. MONSMA
32nd District



JOHN S. MOWAT, JR.
19th District



MICHAEL J. O'BRIEN
6th District

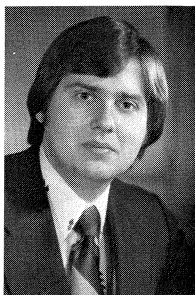


EDWARD CHARLES PIERCE
18th District

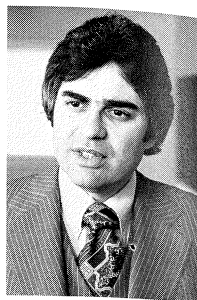
MEMBERS OF THE SENATE



BILLIE S. FARNUM
SECRETARY OF THE SENATE



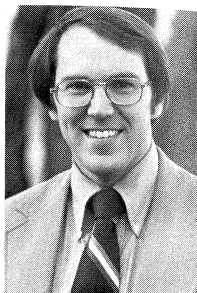
DAVID A. PLawecki
12th District



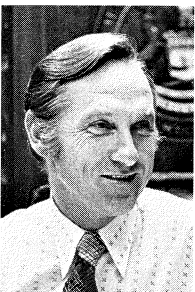
DOUG ROSS
15th District



HAROLD JOSEPH SCOTT
29th District



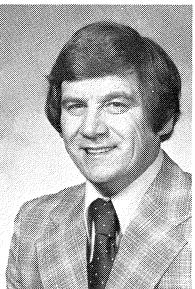
WILLIAM A. SEDERBURG
24th District



ROBERT VANDER LAAN
31st District



JACKIE VAUGHN III
5th District



JOHN A. WELBORN
21st District



ROBERT D. YOUNG
35th District

SENATORS

RICHARD J. ALLEN

30th Senatorial District: Counties of Barry (part), Calhoun (part), Clinton, Eaton (part), Gratiot (part), Ingham (part), Jackson (part), Montcalm (part), and Shiawassee (part).

Republican, of Alma; born Ithaca August 6, 1933; Ithaca High School, BS & DVM Michigan State University, work done towards Ph.D. in agricultural economics; married 1963; children: Lester James & Carri Jo; veterinarian, farmer (5th generation of Allens involved in operation of same Gratiot County farm), former Alma College professor, former director — Michigan Tourist Council; Presbyterian; member Farm Bureau, Rotary Club, Audubon Society, Michigan Historical Society, Michigan Forestry Association, Sierra Club, Alma College Presidents Club, Century Member; father Lester served 12 years in Michigan Legislature; was elected to the House of Representatives in 1968 and 1970 and to the Senate in 1974.

PHILLIP J. ARTHURHULTZ

33rd Senatorial District: Counties of Lake (part), Manistee, Mason, Muskegon, Newaygo (part), and Oceana.

Republican, of Whitehall; born June 16, 1947; single; alumnus, Montague Public Schools, 1952-65, Muskegon Community College, 1965-67, Albion College, 1968-71; attended leadership and governmental training courses at Michigan State University and the University of Michigan; worked throughout high school and college as a newspaperboy, grocery stock clerk, short-order cook, factory worker, park ranger and special deputy county sheriff; Legislative Aide to Michigan State House of Representatives, appointed by Representative Dennis O. Cawthorne, 1967-68; Staff Assistant for the Chamber of Commerce, 1968-71; Administrative Assistant to State Senator Gary Byker, 1971-72; Assistant to Congressman Guy VanderJagt, 1972-73; Director of the Michigan Senate Republican Staff, 1973-78; contributing author of political reform legislation in Michigan; selected an "Outstanding Young Man of America"; member of Farm Bureau, Jaycees, Eagles, Old Newsboys, Michigan United Conservation Clubs, and National Rifle Association; secretary of the Ninth Congressional District Republican Committee, 1973-79; elected delegate to all county and state Republican conventions since 1968; elected to the State Senate in 1978; elected Senate Minority Whip, 1979-80.

DONALD E. BISHOP

8th Senatorial District: County of Oakland (part).

Republican, of Rochester; born February 27, 1933 at Almont; graduate of Almont High School, 1951; Oberlin College, B.A., 1955; Detroit College of Law, J.D., 1966; attorney; served in U.S. Army, 1955-57; married in 1955 to Nancy Michael; children: Rebecca, Susan, Judy, Martha and Michael; member of Congregational Church; Oakland County and Michigan State Bar Associations; elected to the House of Representatives in 1966 and 1968; elected to State Senate in 1970, 1974 and 1978; Senate Republican Whip, 1975-1978; Republican Floor Leader, 1979-1980; member of Senate Committees on Corporations & Economic Development, Commerce, (Vice Chairman) and Judiciary (Vice Chairman); member of Governor's Advisory Commission on Financial Institutions; member of the Michigan Commission on Criminal Justice; member of the Michigan Law Revision Commission; and member of the National Conference of Commissioners on Uniform State Laws. Senator Bishop is a member of the Oakland County Republican Executive Committee.

BASIL W. BROWN

3rd Senatorial District: County of Wayne (part).

Elected in 1956 as State Senator from the Third Senatorial District to succeed Senator Cora M. Brown, and has been re-elected as State Senator each election since, in 1958, 1960, 1962, 1964, 1966, 1970 and 1974. In 1964, he was elected to represent the new reapportioned Sixth

Senatorial District, and served as Democratic Majority Floor Leader and Chairman of the Senate Judiciary Committee. In 1974, he was elected to represent the new reapportioned Third Senatorial District, and to serve as Chairman of the Senate Judiciary Committee. He is Dean of the Senate.

Born March 20, 1927, in Vandalia, Michigan, his family moved to Battle Creek, Michigan in 1929. He is a graduate of Battle Creek's Central High School and won varsity letters in football and track while at Central. A veteran of the U.S. Navy, he was honorably discharged in 1946 after serving in the China Seas, Okinawa and the Philippines.

He has a Bachelor of Arts Degree from the Western Michigan College of Education and a Juris Doctor Degree from the University of Michigan Law School. He passed the Michigan State Bar in 1952 and has been practicing law in Detroit, Michigan since 1953. Currently, his offices are located at 515 E. Larned in Detroit, Michigan. He was formerly Executive Vice President of Diggs Enterprises, Inc., and the legal adviser to Congressman Charles C. Diggs, Jr., of the 13th Congressional District.

Senator Brown is married to Ermajeanne Brown, a school teacher in the Detroit Public Schools, and they have one daughter, Lisa. His father is deceased. His mother lives in Kalamazoo, Michigan and is retired from the Veteran's Administration, Fort Custer, Michigan, and he has a brother who is a Civil Engineer for the New Jersey State Highway Department.

In addition to his legislative duties, Senator Brown is a member of Kappa Alpha Psi Fraternity, the Michigan Federated Democratic Club, the I.B.P.O.E. of W. at Motor City Lodge No. 962, the State Bar of Michigan, the Wolverine Bar Association, the Veterans of Foreign Wars, the Amvets, T.U.L.C. and a Life Member of the N.A.A.C.P. and C.O.R.E.

GARY G. CORBIN

25th Senatorial District: City of Flint (part), Counties of Genesee (part) and Shiawassee (part).

Democrat, of Clio; born December 13, 1941; Bachelor of Arts, Master of Divinity; married, wife Sheila, daughters Susan & Sally; 2 terms Genesee County Board of Commissioners; elected to State Senate in 1974, Assistant Majority Leader of the Senate.

ALVIN J. DeGROW

28th Senatorial District: Counties of Huron, Lapeer (part), Macomb (part), Sanilac, St. Clair (part) and Tuscola.

Republican, of Pigeon; born June 1, 1926 at Pigeon; attended Alma College; married to the former Judith Haist, August 25, 1946; children: David, Michael, Jane; owns and operates a variety store; served two years in the U.S. Navy, World War II as quartermaster third class aboard an LST; Methodist; member of Rotary Club, district governor, 1964-65; Chamber of Commerce, past president; Veterans of Foreign Wars; Tri-County Community College, executive committee; elected to the State Senate to fill a vacancy in 1968 and re-elected in 1970, 1974, 1978.

HARRY A. DeMASO

20th Senatorial District: Counties of Barry (part), Branch, Calhoun (except Lee Township), Hillsdale (part), St. Joseph (part), and from Jackson County the Township of Pulaski and from Kalamazoo County the Township of Charleston.

Republican, of Battle Creek; born February 24, 1921 at Battle Creek; graduate of Battle Creek High School; Argubright College of Business; attended Michigan State University; married Mary Jayne Hocott, June 7, 1947; children: Dr. David Ray and Thomas Eugene; supervisor, Battle Creek Township, 1952-65, supervisor, Calhoun County Board of Supervisors, 1952-65; State Representative, 45th District, 1957-66; past director, Battle Creek Township Civil Defense; past president and secretary-treasurer, Calhoun County Chapter of Michigan Township Association; past director, Battle Creek Area Development Corporation; past chairman and executive director, Calhoun County Safety Commission; past chairman, Calhoun County Planning Committee; past general chairman, Michigan State Association of Supervisors Committee on the Constitutional Convention; member, Michigan Crime and Delinquency Council Technical Committee; former chairman, Battle Creek Area Government

Council; former vice president, Argubright College of Business and member of board of trustees; church school teacher, Birchwood Methodist Church; adult education teacher, Lakeview High School; Methodist; served in U.S. Army Air Corps, 1943-45; past master Battle Creek Lodge No. 12, F.&A.M.; Past Secretary-Treasurer, Battle Creek Scottish Rite Club; Battle Creek Chapter No. 19, R.&A.M.; Battle Creek Commandery No. 33; Bryant Chapter No. 153, O.E.S.; 32nd Degree Mason, DeWitt Clinton Consistory; associate commander, the Commanders of the State of Michigan; awards from Battle Creek Enquirer & News; "George Award" for community service, 1957; Michigan Probate Judges and Juvenile Officials Association, 1962; Argubright College of Business "Alumni of the Year," 1962; Honorary Legion of Honor, International Order of DeMolay, 1964; Keep Michigan Beautiful, Inc., 1964; Fraternal Order of Police, Michigan Lodge, 1961 & 1966; Mich. Assoc. of Osteopathic Physicians & Surgeons "Honorary Lay Membership," 1969; American Legion Hospital, Inc. award for outstanding service, 1970; commissioned Kentucky Colonel, State of Kentucky, 1971; elected to the Senate in 1966, 1970, 1974 and 1978. Michigan International Council, Certificate of Leadership (International Affairs) 1976; Honorary Ambassador, Battle Creek Area Chamber of Commerce Ambassadors Club 1977.

JAMES De SANA

11th Senatorial District: Counties of Monroe, Washtenaw (part), and Wayne (part).

Democrat, of Wyandotte; born October 6, 1930 at Wyandotte; graduate St. Patrick's High School — Wyandotte, Walsh Institute of Accounting and Business Law; married the former Patricia Salliotte in 1962, children: Jimmy, Michelle, Leslie, Annette and Richard; St. Patrick's Catholic Church — Wyandotte; 4 years U.S. Navy; councilman City of Wyandotte 1957, mayor of Wyandotte 1961, Wayne County Commissioner 1969; Knights of Columbus, VFW, Jaycees — Distinguished Service Award 1961; elected to the Senate on January 13, 1976 to fill a vacancy.

GILBERT J. DiNELLO

26th Senatorial District: Counties of Macomb (part), and Wayne (part).

Democrat, of East Detroit; born February 28, 1935 in Detroit; B.S. business administration, University of Detroit; banking courses through American Institute of Banking; University of Michigan Extension Service in real estate finance, real estate law, real estate appraisal I and II and real estate building; married; commercial real estate broker; former administrative assistant in the commercial and residential mortgage department of Michigan National Bank of Detroit; past precinct delegate; past membership chairman of Macomb County Democratic Committee; served in Michigan Army National Guard; Roman Catholic; member of Executive Board for Macomb County Democratic Committee; 14th Congressional District Committee; Knights of Columbus, Leo XIII, East Detroit; Sons of Columbus, Detroit Council No. 91; Fraternal Order of Eagles, Aerie No. 2495, East Detroit; International Association of Lions Clubs, East Detroit; elected to the House of Representatives in 1972, 1974 and 1976; elected to the State Senate in 1978.

JOHN M. ENGLER

36th Senatorial District: Counties of Antrim (part), Benzie, Clare, Grand Traverse, Isabella, Kalkaska (part), Lake (part), Leelanau, Mecosta, Missaukee, Montcalm (part), Newaygo (part), Osceola, and Wexford.

Republican, of Mt. Pleasant; born October 12, 1948 at Mt. Pleasant; graduate of Beal City High School and Michigan State University, B.S. in Agricultural Economics; married to Colleen House Engler; delegate, White House Conference on Youth, 1971; recipient of the Distinguished Service to Agriculture award from the Michigan Agriculture Conference, Roman Catholic; member of the Knights of Columbus; Farm Bureau; past member of the Board of Trustees of the Michigan YMCA and Vice Chairman of the State Youth and Government Committee; past member of the Board of Directors of the College of Agriculture and Natural Resources Alumni Association at Michigan State University; elected to the House of Representatives in 1970, 1972, 1974, 1976, and to the Michigan Senate, 1978.

WILLIAM FAUST

13th Senatorial District: Counties of Washtenaw (part) and Wayne (part).

Democrat, of Westland; born March 29, 1929 at Bucyrus, Ohio; attended Indiana University, University of Michigan, A.B. degree, 1952; graduate work at Eastern Michigan University; Nankin Township trustee, 1960-63 and supervisor, 1963-65; elected to the State Senate in 1967, 1971, and 1975, elected majority leader 1977.

JACK FAXON

7th Senatorial District: County of Wayne (part).

Democrat, of Northwest Detroit; B.S. & M. Ed. Wayne State University, M.A. in history University of Michigan; educator and former teacher in Detroit Public School System; delegate to Michigan Constitutional Convention in 1961-62, member of Board of Advisors of the School of Theology of the Diocese of Michigan, Anti-Defamation League, American Civil Liberties Union; Founders Society, Friends of Modern Art, Member Board of Directors — Michigan Workshop of Fine Prints; elected to Michigan House of Representatives in 1964, 1966 and 1968, elected to the Michigan Senate in 1970, 1974 and 1978.

Among his efforts while serving in the House of Representatives was the establishment of the Michigan Council for the Arts; the development of educational programs as related to drug abuse and smoking; the funding of Wayne County Community College; the development and funding of the statewide assessment program in education; an advocate in the area of consumer affairs; a revision of the state's conflict-in-interest laws; and the examination of the Michigan community college system. As a member of the Michigan Senate, he is President Pro Tempore, Chairman of the Education Committee, Vice Chairman of Health, Social Services & Retirement and Chairman of the Joint Legislative Committee on the Arts, a special committee for the advancement of the creative arts, and Labor Committee. As an educator, Senator Faxon serves as the Headmaster of The City School of Detroit, a private, non-profit, non-denominational, bi-lingual, elementary day school.

ED FREDRICKS

23rd Senatorial District: Counties of Allegan, Barry (part), Kalamazoo (part), Kent (part), Ottawa, and Van Buren (part).

Republican, of Holland; born in Holland, June 27, 1942; 1964 B.A. in Economics from Calvin College; 1967 M.A. in History, Western Michigan University; 1968 M.A. Sociology, Western Michigan University; 1967 assistant to U.S. Rep. Guy VanderJagt; 1968 executive director Michigan Citizens for Nixon; 1968 author of book, *MacArthur: His Mission and Meaning*; 1970-72 served as American Vice Consul with the American Embassy, Seoul, Korea; 1972-74 Political Officer, Bureau of International Organization Affairs, U.S. Department of State; 1974 elected to first term in the Michigan House of Representatives; 1976 re-elected to second term; 1978 elected Chairman, Michigan Conservative Union; 1978 elected to Michigan State Senate; single; Faith Christian Reformed Church, Holland.

HARRY GAST

22nd Senatorial District; Berrien County, Cass County (less a portion of Porter Twp.), and parts of Van Buren County.

Republican, of St. Joseph; born September 19, 1920 at St. Joseph; attended St. Joseph Public High School and Michigan State University, 2 years; married in 1945; children: Barbara, Linda and Dennis; former supervisor, Lincoln Township; farmer; former treasurer, Lincoln Township, 18 years, former vice-chairman, County Board of Public Works and County Board of Health; member, Farm Bureau, Lions, Honorary Jay Cees; former member, Lakeshore School Board; Baptist; elected to the House of Representatives in 1970, 1972, 1974, 1976 and to the State Senate in 1978; member of the Senate Appropriations Committee; assistant caucus chairman.

R. ROBERT GEAKE

14th Senatorial District: County of Wayne (part).

Republican, of Northville; born October 26, 1936 at Detroit; B.S. special education, M.A. guidance and counseling, Ph.D. education and psychology, all from University of Michigan; married to the former Carol L. Rens of Grand Rapids, 1962; children: Roger Rens, Tamara Lynne and William Rens; educational psychologist; elected trustee-at-large Schoolcraft Community College in 1969 and subsequently elected chairman; Presbyterian; National Education Association, life member; American and Michigan Psychological Associations; Northville Rotary Club; several historical and genealogical societies; elected to the House of Representatives in 1972, 1974, and 1976; elected to the Senate on March 23, 1977, to fill a vacancy, re-elected 1978.

THOMAS GUASTELLO

9th Senatorial District: Counties of Lapeer (Almont Township), Macomb (part), and St. Clair (part).

Democrat; born in 1943, Detroit, Michigan; graduate of Lakeview High School, St. Clair Shores; Michigan State University, B.A. in government honors program; Detroit College of Law, Juris Doctor degree; practicing attorney, 38200 South Gratiot Avenue, Mt. Clemens, Michigan; member of the State Bar of Michigan, American Bar Association, Macomb County Bar Association, St. Clair County Bar Association, member of The Economic Club of Detroit, and member Board of Directors of the Detroit College of Law Alumni Association.

Elected to the House of Representatives in 1968 to represent the 71st House District and re-elected in 1970 and 1972; served as chairman of the House Judiciary Committee. Elected to the Senate in 1974; served as member of Senate Appropriations Committee, member of Joint Capital Outlay Committee, and co-chairman of Joint Committee to Study the Problems of Spouse Abuse. Re-elected to Senate in 1978; member of Senate Appropriations Committee, chairman of Corrections Subcommittee, member of Joint Capital Outlay Committee, chairman of Agriculture Subcommittee, and member of the Committee on Upper Peninsula Industrial and Economic Affairs.

Award recipient for outstanding legislative accomplishments from the Michigan District Judges Association and the Michigan Probate Judges; recipient of honorary lay membership to the Michigan Association of Osteopathic Physicians and Surgeons, Inc. for legislative leadership and service; recipient of the 1975 and 1978 distinguished service award from the Utica Education Association; and recipient of award from Algonac Community Schools for support and service.

GEORGE ZAVEN HART

10th Senatorial District: County of Wayne (part).

Democrat, of Dearborn; born May 13, 1927 at Detroit; graduate Fordson High School, AA Henry Ford Comm. College, BA Wayne State Univ. 1952; single; Armenian Orthodox, World War II veteran Army Infantry; City Councilman (Dearborn) 13 years, County Commissioner 7 years; Dearborn Goodfellows, Melvindale Goodfellows, Dearborn Senators Club, PLAV Post 75, 16th District Democratic Organization and 15th District Democratic Organization; elected to State Senate in 1978.

JEROME T. HART

34th Senatorial District: Counties of Bay and Saginaw (part).

Democrat, of Saginaw; born July 23, 1932 at Saginaw; graduate of St. Andrew High School, Saginaw, correspondence courses in accounting through LaSalle University; not married; member St. Andrew Roman Catholic Church and Knights of Columbus (Saginaw); secretary-treasurer Quality Seal Oil Company 1954-60, owner Tiny Town Infant & Children Clothing 1960, secretary-treasurer Catholic Cemetery Commission 1960-62; treasurer Saginaw County Democratic Committee 1956-60, president Saginaw County Democratic Club 1958-60, member Democratic State Central Committee 1959-63, 8th Congressional District Chairman 1962-64 (re-elected in 1974), executive assistant to State Treasurer 1962-64, elected to the

State Senate in 1964, 1966, 1970, 1974, and 1978, currently serves as the Chairman of the Senate Appropriations Committee and chairman of the Joint Capital Outlay Committee, has served on the Appropriations Committee since first elected to the Senate and served as Democratic Floor Leader of the Senate from December 1973 to January 1975, chairman of Legislative Commission on Courts, co-chairman Joint Committee to Study Abuse in State Mental Health Facilities.

JOHN C. HERTEL

2nd Senatorial District: County of Wayne (part).

Democrat, of Harper Woods; born Dec. 4, 1946; Bachelor of Science Wayne State University, political science and education; married former Janice Amorello 1969, daughter Holly Christine, and son John Joseph; Roman Catholic; Teacher Warren Consolidated Schools; Wayne County Commissioner (youngest ever at time of election); elected to State Senate in 1974, re-elected 1978; Assistant Majority Whip; Chairman Senate Environmental and Agricultural Affairs Committee; Vice Chairman Senate Judiciary Committee; Member Senate Consumer Affairs Committee; Recipient of the Michigan United Conservation Clubs Conservation Legislator of the Year Award, Michigan Agricultural Conference Distinguished Service Award; Recognized as Outstanding young man in Harper Woods by the Harper Woods Jaycees. Recipient of the Wayne State University Distinguished Alumnus Award, Honorary Life Member of the Michigan Sheriffs Association, Member of the Natural Resources Committee of the National Association of State Legislators.

DAVID S. HOLMES, JR.

4th Senatorial District: County of Wayne (part).

Democrat of Detroit; born August 11, 1914 at Covington, Kentucky; attended Virginia State College, B.S. Degree; graduate study at the University of Michigan; wife, Avis Greene; children, one daughter Patricia Ann; employed as a UAW-AFL-CIO aide; member of Allen Temple A.M.E. Church, Detroit; Masons; Alpha Phi Alpha Fraternity; 13th District Business and Professional Men and Women's Club; Trade Union Leadership Council; Life member of the NAACP; Chairman of the Michigan Democratic Black Caucus; Delegate to the 1974 Democratic National Convention, Chicago, Illinois; Alternate Delegate to the 1977 Democratic National Convention; Elected to the House of Representatives to fill a vacancy in 1959 and re-elected in 1960 to March, 1974. Elected to the Michigan State Senate, March, 1974 to fill a vacancy in the 4th Senatorial District; re-elected in November, 1974 to present; Member of Committees on: Appropriations — Chairman, Subcommittee on Public Health; Vice Chairman, Subcommittee on General Government, Vice Chairman, Subcommittee on Highways and Transportation, member, Capital Outlay, Vice Chairman, Senate Democratic Caucus.

BILL S. HUFFMAN

16th Senatorial District: County of Oakland (part).

Former councilman and mayor; veteran of U.S. Navy; member, Kiwanis Club; elected to the House of Representatives in 1962 and to each succeeding session of the Legislature; elected to the State Senate in November 1974.

MITCH IRWIN

37th Senatorial District: Counties of Alcona, Alger (part), Alpena, Antrim (part), Charlevoix, Cheboygan, Chippewa, Crawford, Delta (part), Emmet, Iosco (part), Kalkaska (part), Luce, Mackinac, Montmorency, Oscoda, Otsego, Presque Isle and Schoolcraft (part).

Democrat, of Sault Ste. Marie; born July 8, 1952, at Sault Ste. Marie; Rudyard High School, B.A. Lake Superior State College, additional study at Eastern Michigan University and University of Virginia; past teacher, coach, juvenile counselor, regional planner and administrator; married in 1975 to Cynthia K. Williams, son Jeffrey Mitchel; lay reader and Eucharistic Minister at St. Mary's Pro-Cathedral in Sault Ste. Marie, Roman Catholic; Vice-chair of Chippewa County Chapter American Red Cross, member Michigan Recreation and Park Association; elected to State Senate in 1978.

KERRY KAMMER

17th Senatorial District: Counties of Livingston (part) and Oakland (part).

Democrat, of Pontiac; born Detroit August 13, 1948; St. Frederick High School, Pontiac, B.A. Wayne State University; married Carole Busch in 1972; two children, Shea and Claire; St. Benedict's Catholic Church in Waterford; Pontiac City Clerk 1973-74; elected to State Senate 1974, 1978; member of Senate Appropriations Committee; chairman of subcommittee on school aid and Department of Education; chairman of subcommittee on DNR; member of Joint Capitol Outlay Committee; chairman of Democratic caucus; 1977-78 — chairman, special committee to investigate pollution and toxic substances.

As Senator, honored as Michigan United Conservation Clubs' 1977 Legislative Conservationist of the Year; recipient of VFW Service Award; Pontiac Bicentennial Honor Award; Pontiac Latino Community Service Award. Sponsored legislation to create Budget Stabilization Fund and to establish Kammer Recreational Land Acquisition Trust Fund. Member of Knights of Columbus, Pontiac Jaycees, Pontiac March of Dimes Board, Oakland County Sportsmen's Club, Oakland County Association of Retarded Citizens.

JOHN FRANCIS KELLY

1st Senatorial District: Detroit, Grosse Pointe, Grosse Pointe Park, Grosse Point Farms, Grosse Point Shores, Lake Township.

Democrat, of Detroit; born Sept. 6, 1949, at Detroit; A.B. with honors University of Michigan 1972, master of public administration Wayne State University 1974, international relations Georgetown University 1975-1976, Ph.D. candidate in political science Wayne State University 1974-1975, 1976-1978, university fellow 1976-1978, Detroit College of Law 1976-1978; married Toni Marie Plotzke May 5, 1972, daughter Dana Marie; Roman Catholic; Lieutenant/ASA Military Intelligence, U.S. Army Reserve 1972-1978; college instructor; Executive Board A.D.A., Common Cause, T.U.L.C., N.E.A.R., Project ReTree, Grosse Pointe Jaycees, Detroit Economic Club, Detroit Committee on Foreign Relations, elected to State Senate in 1978.

JOSEPH S. MACK

38th Senatorial District: Counties of Alger (part), Baraga, Delta (part), Dickinson, Gogebic, Houghton, Iron, Keweenaw, Marquette, Menominee, Ontonagon and Schoolcraft (part).

Democrat, of Upper Peninsula.

ART MILLER, JR.

27th Senatorial District: County of Macomb (part).

Democrat, of Warren; born July 11, 1946 at Detroit; graduate of Warren High School and Eastern Michigan University; married, children: Holly Ann and Nicole Marie; Catholic; 3 terms on the Warren Council, Council President and Council Vice President; elected to the Senate on April 19, 1977, and November 7, 1978.

STEPHEN V. MONSMA

32nd Senatorial District: County of Kent (part).

Democrat, of Grand Rapids; born Pella, Iowa, Sept. 22, 1936; A.B. 1958 Calvin College, M.A. 1961 Georgetown University, Ph.D. 1965 Michigan State University; married 1964, son, Martin, and daughter, Kristin Joy; Christian Reformed Church; political scientist, U.S. Army; member of the board of the Grand Rapids Right-to-Life Committee, member of the board of the Churches' Center for Theology and Public Policy, member of the board of Evangelicals for Social Action; member Urban League, West Michigan Environmental Action Council and Kent County Democratic Executive Committee; author of *American Politics* 1st ed. 1969, 2nd ed. 1973, 3rd ed. 1976, and *The Unraveling of America*, 1974; elected to House of Representatives in 1974, and 1976 and to the Senate in 1978.

JOHN S. MOWAT, JR.

19th Senatorial District: Counties of Hillsdale (part), Jackson (part), Lenawee (part) and Washtenaw (part).

Republican, of Adrian; born January 12, 1927 at Chicago, Illinois; graduate of Adrian High School and Michigan State University, B.S.; married in 1954; children: Richard, Ronald and Rex; fruit grower and retail fruit marketeer; served in the Army Air Force in World War II; Methodist; past president, Madison School Board and Lenawee County Association of School Boards; member and past president, Michigan Certified Farm Markets; member of the Lenawee County Chamber of Commerce, Lenawee County Farm Bureau, Michigan Horticultural Society, Michigan Agricultural Conference, Michigan Peach Council, past member Lenawee County Youth Home Board; elected to the House of Representatives in 1970, 1972, 1974, and 1976. Elected Assistant Republican Leader by Republican Caucus for 1974 and 1976 Session. Elected to the State Senate in 1978. Elected Republican Caucus Chairman.

MICHAEL J. O'BRIEN

6th Senatorial District: County of Wayne (part).

Democrat, of Detroit, born Sept. 5, 1942; graduate of Salesian High School, Detroit; attended Michigan State University; single, member Our Lady Gate of Heaven; member Michigan Democratic Party, Local 2057 — AFSC & ME, Wayne County Employees Assn., Mic Mac Athletic Club, Crisis Club of Detroit, Ancient Order of Hibernians; 14 years of government service and experience with the Wayne County Road Commission; elected to State Senate in 1974. Past Chairman of Tourist Industry Relations Committee, past Chairman of Senate Business Committee, past Chairman of Senate Democratic Caucus. Presently Chairman of Senate State and Veterans' Affairs Committee, Vice Chairman of Corporations and Economic Development Committee, Chairman of the Wayne County Delegation of the Michigan Senate, member of the Legislative Council and Intergovernmental Relations Committee and Assistant Majority Floor Leader of the Michigan Senate.

EDWARD CHARLES PIERCE

18th Senatorial District: Counties of Jackson (part), Lenawee (part), Livingston (part), and Washtenaw (part).

Democrat, of Ann Arbor, born Jan. 3, 1930 at Three Rivers; Ann Arbor High School 1947, B.A. University of Michigan 1955, M.D. University of Michigan 1959; married 1954, children: Lynne, Janet, Paul, Amy; United States Air Force 1947-1951; physician; Ann Arbor City Council 1964-1966; elected to State Senate in 1978.

DAVID A. PLawecki

12th Senatorial District: County of Wayne (part).

Democrat, of Dearborn Heights; born November 8, 1947 at Detroit. Graduate of Divine Child High School; General Motors Institute, B.S. in Mechanical Engineering; University of Michigan, Master's in Business Administration. Married to the former Linda R. Chantres, 1970, son: Brent David. When first elected to the State Senate in 1970, Plawecki was 22 and the youngest state senator elected in Michigan history. Currently serving his third term, his legislative efforts have helped provide job security and safety, and needed help for injured and laid-off workers; assured open meetings by public bodies; extended warranties for consumers on faulty merchandise; saved vital rail lines in Michigan from abandonment; protected children from use in pornographic material; ensured accessibility to public transportation for handicappers and created a statewide arson investigation team. Upon completion of his most recent term in office, he was named "One of Michigan's 12 Best Legislators" by Booth Newspapers, Inc. Other awards include: award from the Michigan Fire Inspector's Association for his work toward the suppression of arson and related crimes; award of appreciation from the Southeastern Michigan Transportation Authority for his work in the area of public transportation; Michigan Superior Service award from the Association of School Boards and the Association of School Administrations for his legislative work affecting education; benefactor award from the Dearborn Association of Retarded Children for his help

to the retarded. As a member of the Senate, he serves as Senate Majority Floor Leader, Chairman of the Senate Labor & Retirement Committee, Vice-Chairman of the Senate Transportation & Tourist Industry Committee, and member of the Senate Administration & Rules Committee. His civic activities include memberships in the Jaycees, Goodfellows, Polish Legion of American Veterans, Knights of Columbus, GMI Alumni Association, Kingswood-Crestwood Civic Association, Polish American Congress, Taylor, Allen Park, Southgate, Dearborn Heights and Inkster Democratic clubs.

DOUG ROSS

15th Senatorial District: Southern Oakland County.

Democrat, of Oak Park; born Detroit, June 15, 1942; B.A. in History with honors, University of Michigan; M.A. in Public Affairs, Woodrow Wilson School of Public Affairs, Princeton University; Graduate work, University of Michigan and London School of Economics; married Karol Lupiloff; children: Mitchell, Douglas and Julie; economist; legislative aide to U.S. Representative Neil Staebler, 1963; legislative aide to U.S. Representative John Dingell, 1965; teacher of economics and civics, Detroit Public Schools, 1966-67; legislative aide to U.S. Senator Joseph Tydings, 1969-70; co-director and founder, Michigan Citizens Lobby, 1973-74, 1976; executive director, Michigan Common Cause, 1975; founder, Citizens to Save Small Business, 1976; elected to the Senate in 1978.

HAROLD JOSEPH SCOTT

29th Senatorial District: County of Genesee (part).

Democrat, of Flint; born Flint Oct. 5, 1938; St. Mary's High School (Flint), A.B. 1960 University of Michigan, M.A. American history Wayne State University 1964, 26 hours beyond M.A., received National Defense Education Agency grant 1966 — American history; married 1960, wife, Jacqueline I., children: Harold A., John C., Ann Marie, and Michael; teacher 11 years — grade school, high school, junior college; Knights of Columbus, former Board of Education member St. Luke, former officer in Toastmaster's International, former officer in Michigan Education Association Political Action Organization (SEPAC 25), former elected Executive Board member of Genesee County Democratic Party; member YMCA, Croatian Slovene Club, Fraternal Order of Eagles, involved in various civic organizations and drives; hobbies: swimming, camping, jogging and chess; elected to House of Representatives in 1972, 1974 and 1976; elected to the Senate on March 23, 1977 in a special election to fill a vacancy. Re-elected to the Senate in 1978, member of Appropriations Committee and Joint Special Committee on Aging, Appropriations Sub-Committees: Regulatory, Chairman; State Police & Military Affairs, Chairman; member, Corrections; Community Colleges.

WILLIAM A. SEDERBURG

24th Senatorial District: County of Ingham (part).

Republican, of East Lansing, born Aug. 1, 1947; B.S. Mankato State College (Mankato, Minn.), M.A. & Ph.D. Michigan State University; married 1972, son Matthew Eric; University Lutheran Church; 1st Lt. U.S. Army Reserve; Michigan State Board of Education (secretary 1974), County Commission (Ingham County); Trustee of Michigan Lung Association. Board of Christian Learning and Action (University Lutheran Church), national officer of Kappa Delta Pi, member Capitol Area Lutheran Cluster, chairman Ingham County Republican Party; elected to State Senate in 1978.

ROBERT VANDER LAAN

31st Senatorial District: Counties of Barry (part), Eaton (part), Ionia, Kent (part), and Montcalm (part).

Republican, of Kentwood; born Paris Township June 4, 1930; A.B. 1952 Calvin College, M.A. 1959 University of Michigan, married Mildred Bouma in 1951; children: Mrs. Linda Beth Slotsema and Robert J.; member and catechism instructor Millbrook Christian Reformed Church; former high school teacher and part-time instructor in state and local government, political parties, and public opinion and special interest groups at Calvin College, former clerk, trustee, and supervisor of Paris Township (now city of Kentwood); member: Lotus Club, Michigan Townships Association, named "Man of the Year" 1964 by City of Wyoming

Jaycees; local precinct delegate since 1952, delegate to all state conventions since 1952, member of Kent County Republican Executive Committee since 1962, alternate delegate to Republican National Convention 1972, Republican candidate for 5th Congressional District 1974; member of Executive Committee of National Conference of State Legislative Leaders 1972 — reelected 1973, 1974; Director, The State Legislative Leaders Foundation; former vice-chairman of Executive Committee of the Council of State Governments, past president of Midwestern Conference of the Council of State Governments; elected to State Senate in 1962 and to each succeeding session (senior Republican member), former Senate Majority Leader 1970-74, former chairman of Senate Committees on Labor and Senate Business, former Assistant Minority Leader, 1977-78, present Senate Minority Leader, (1979-80 session), present member of the Legislative Council and Senate Committees on Senate Administration and Rules, and State and Veterans' Affairs.

JACKIE VAUGHN III

5th Senatorial District: County of Wayne (part).

Democrat, of Detroit; single; graduate of Highland Park, Hillsdale College, B.A. Oberlin College, M.A., Fulbright Scholar and Fellow, Oxford University, Oxford, England, Oxon B. Litt, (one of the few Americans to receive the State Department's extension of the Fulbright Scholarship for three years); U.S. Navy, yeoman; past president, State Young Democrats, two terms; member and Sunday School instructor, Hartford Memorial Baptist Church; associate member, Central Methodist Church; listed in "Who's Who Among American College and University Students"; elected to ODK (Omicron Delta Kappa) Honor Leadership Society; Elected to Michigan House of Representatives; Elected to Michigan Senate in 1978 and named Assistant President Pro Tem of the Senate. Recipient: Model Legislator Award, Michigan Chronicle; Youth Leadership Award, Rotary International; Alumni Achievement Award, Hillsdale College; Service Award, Jaycees; 1975 Legislator of the Year award, Michigan Osteopathic Society; Honorary Lay Membership, Michigan Association of Osteopathic Physicians and Surgeons; named 1975 Legislator of the Year by the Detroit Medical Society, Wolverine Dental Society, and the Wolverine Medical Society; YMCA 1975 World Ambassador to Russia; and Chairman of YMCA Youth in Government program since 1970. Invited guest lecturer, Oxford University, Oxford, England, Trinity and Hilary terms. Granted audience with His Holiness, Pope Paul VI at the Vatican, Rome, Italy, November 1976.

JOHN A. WELBORN

21st Senatorial District: Counties of Cass (part), Kalamazoo (part), St. Joseph (part), and Van Buren (part).

Republican, of Kalamazoo; born December 20, 1932 at Kalamazoo; graduated from Richland High School; married, 1952; children: Kayla, Kami, John; township supervisor; Kalamazoo County Board of Supervisors; Kalamazoo Soil Conservation District dir.; volunteer fireman; chairman of Metro Council; Kalamazoo Townships Assoc. member; Chamber of Commerce Industrial Development committee member; Kalamazoo Republican Executive Committee; 2 years Naval Reserve; Protestant; elected to the House of Representatives in 1972, and to State Senate in 1974.

ROBERT D. YOUNG

35th Senatorial District: In Bay County: City of Midland (Bay County portion), Counties of Arenac, Gladwin, Gratiot (part), Iosco (part), Midland, Ogemaw, Roscommon, and Saginaw (part).

Republican, of Saginaw; born March 7, 1934 in Saginaw County; attended Saginaw High School and Michigan State University; married; children: Mary Jo, Barbara and Gary; farmer and home construction business; Spaulding Township supervisor; Saginaw County commissioner; army reserve, 1957-63; member of Bridgeport Community Church, Salina Lodge F.&A.M., Bay City Scottish Rite Consistory, Elf Khurafeh Shrine, former Bridgeport Jaycees and Michigan Farm Bureau; elected to the House of Representatives in 1970 and 1972, reelected in 1973; elected to the Michigan Senate in 1974, reelected in 1978.