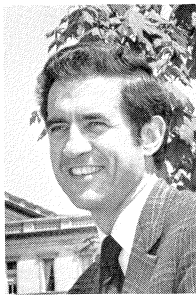
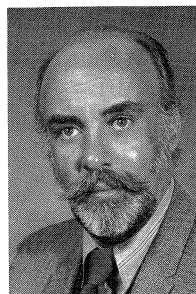


**RICHARD J. ALLEN**  
30th District



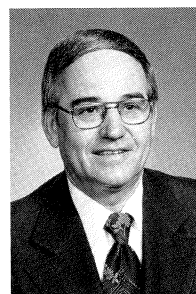
**DONALD E. BISHOP**  
8th District



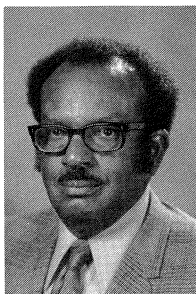
**BASIL W. BROWN**  
3rd District



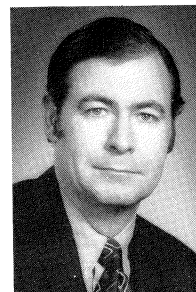
**GILBERT E. BURSLEY**  
18th District



**GARY BYKER**  
23rd District



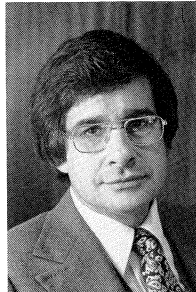
**ARTHUR CARTWRIGHT**  
5th District



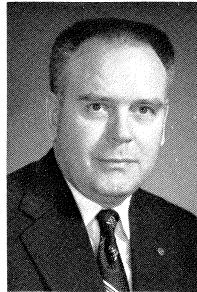
**DANIEL S. COOPER**  
15th District



**GARY G. CORBIN**  
25th District



**ROBERT W. DAVIS**  
37th District

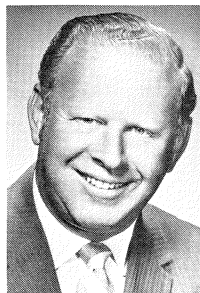


**ALVIN J. DeGROW**  
28th District

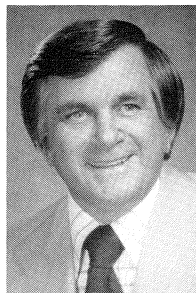
## MEMBERS OF THE SENATE



**MEMBERS  
OF THE  
SENATE**



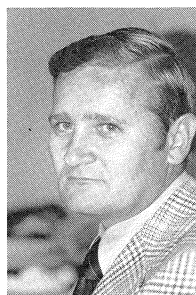
**HARRY A. DeMASO**  
20th District



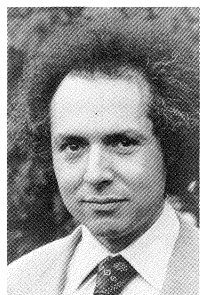
**JAMES DeSANA**  
11th District



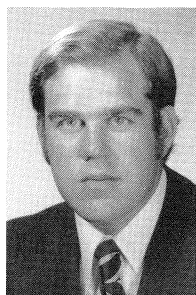
**ANTHONY A. DEREZINSKI**  
33rd District



**WILLIAM FAUST**  
13th District



**JACK FAXON**  
7th District



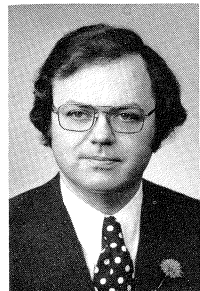
**WILLIAM B. FITZGERALD**  
1st District



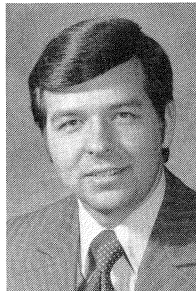
**R. ROBERT GEAKE**  
14th District



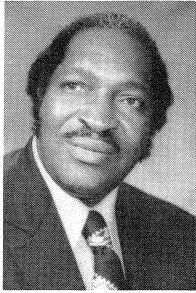
**THOMAS GUASTELLO**  
9th District



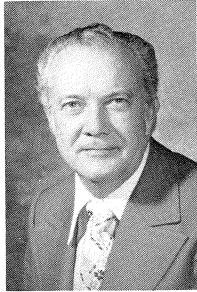
**JEROME T. HART**  
34th District



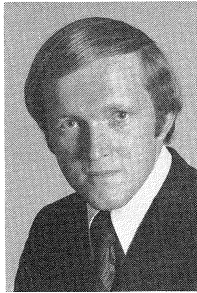
**JOHN CHARLES HERTEL**  
2nd District



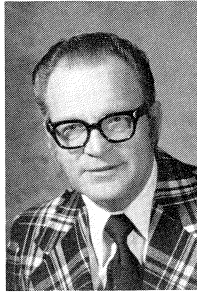
DAVID S. HOLMES, JR.  
4th District



BILL S. HUFFMAN  
16th District

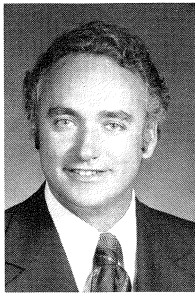


KERRY KAMMER  
17th District

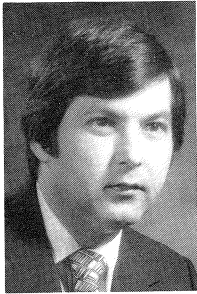


JOSEPH S. MACK  
38th District

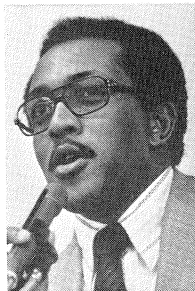
## MEMBERS OF THE SENATE



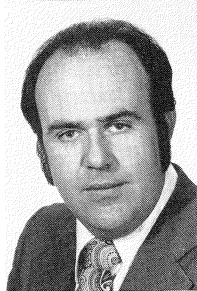
PATRICK H. McCOLLOUGH  
10th District



ART MILLER, JR.  
27th District



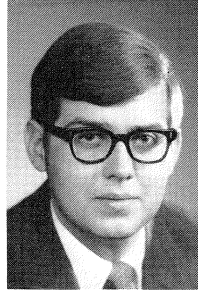
EARL E. NELSON  
24th District



MICHAEL J. O'BRIEN  
6th District

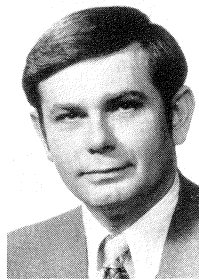


JOHN R. OTTERBACHER  
32nd District

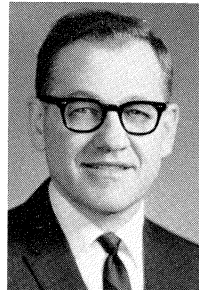


DAVID A. PLAWECKI  
12th District

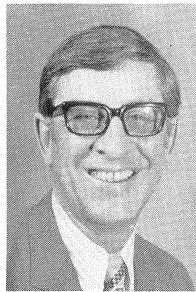
# MEMBERS OF THE SENATE



**HAROLD JOSEPH SCOTT**  
29th District



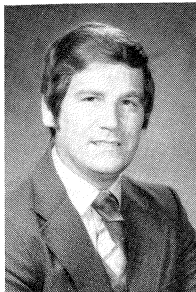
**JOSEPH M. SNYDER**  
26th District



**JOHN E. TOEPP**  
36th District



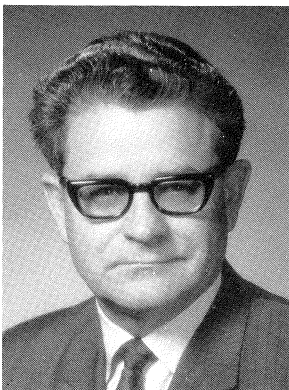
**ROBERT VANDER LAAN**  
31st District



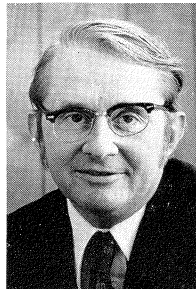
**JOHN A. WELBORN**  
21st District



**ROBERT D. YOUNG**  
35th District



**BILLIE S. FARNUM**  
Secretary of the Senate



**HAL W. ZIEGLER**  
19th District



**CHARLES O. ZOLLAR**  
22nd District

## SENATORS

### RICHARD J. ALLEN

30th Senatorial District: Counties of Barry (part), Calhoun (part), Clinton, Eaton (part), Gratiot (part), Ingham (part), Jackson (part), Montcalm (part), and Shiawassee (part).

Republican, of Alma; born Ithaca August 6, 1933; Ithaca High School, BS & DVM Michigan State University, work done towards Ph.D. in agricultural economics; married 1963; children: Lester James & Carri Jo; veterinarian, farmer (5th generation of Allens involved in operation of same Gratiot County farm), former Alma College professor, former director — Michigan Tourist Council; Presbyterian; member Farm Bureau, Rotary Club, Audubon Society, Michigan Historical Society, Michigan Forestry Association, Sierra Club, Alma College Presidents Club, Century Member; father Lester served 12 years in Michigan Legislature; was elected to the House of Representatives in 1968 and 1970 and to the Senate in 1974.

### DONALD E. BISHOP

8th Senatorial District: County of Oakland (part).

Republican, of Rochester; born February 27, 1933 at Almont; graduate of Almont High School, 1951; Oberlin College, B.A., 1955; Detroit College of Law, J.D., 1966; attorney; served in U.S. Army, 1955-57; married in 1955 to Nancy Michael; children: Rebecca, Susan, Judy, Martha and Michael; member of Congregational Church; Oakland County and Michigan State Bar Associations; elected to the House of Representatives in 1966 and 1968; elected to State Senate in 1970 and 1974; Senate Republican Whip, 1975-present; member of Senate Committees on Corporations & Economic Development, Commerce, and Judiciary; member of Governor's Advisory Commission on Financial Institutions; member of the Michigan Commission on Criminal Justice; member of the Michigan Law Revision Commission; and member of the National Conference of Commissioners on Uniform State Laws. Senator Bishop is a member of the Oakland County Republican Executive Committee.

### BASIL W. BROWN

3rd Senatorial District: County of Wayne (part).

Elected in 1956 as State Senator from the Third Senatorial District to succeed Senator Cora M. Brown, and has been re-elected as State Senator each election since, in 1958, 1960, 1962, 1964, 1966, 1970 and 1974. In 1964, he was elected to represent the new reapportioned Sixth Senatorial District, and served as Democratic Majority Floor Leader and Chairman of the Senate Judiciary Committee. In 1974, he was elected to represent the new reapportioned Third Senatorial District, and to serve as Chairman of the Senate Judiciary Committee. He is Dean of the Senate and Vice Chairman of the Senate Democratic Caucus.

Born March 20, 1927, in Vandalia, Michigan, his family moved to Battle Creek, Michigan in 1929. He is a graduate of Battle Creek's Central High School and won varsity letters in football and track while at Central. A veteran of the U.S. Navy, he was honorably discharged in 1946 after serving in the China Seas, Okinawa and the Philippines.

He has a Bachelor of Arts Degree from the Western Michigan College of Education and a Juris Doctor Degree from the University of Michigan Law School. He passed the Michigan State Bar in 1952 and has been practicing law in Detroit, Michigan since 1953. Currently, his offices are located at 1923 First National Building in Detroit, Michigan. He was formerly Executive Vice President of Diggs Enterprises, Inc., and the legal adviser to Congressman Charles C. Diggs, Jr., of the 13th Congressional District.

Senator Brown is married to Ermajeanne Brown, a school teacher in the Detroit Public Schools, and they have one daughter, Lisa. His father is deceased. His mother lives in Battle Creek, Michigan and is retired from the Veteran's Administration, Fort Custer, Michigan, and he has a brother who is a Civil Engineer for the New Jersey State Highway Department.

In addition to his legislative duties, Senator Brown is a member of Kappa Alpha Psi Fraternity, the Michigan Federated Democratic Club, the I.B.P.O.E. of W. at Motor City Lodge No. 962, the State Bar of Michigan, the Wolverine Bar Association, the Veterans of Foreign Wars, the Amvets, T.U.L.C. and a Life Member of the N.A.A.C.P. and C.O.R.E.

## GILBERT E. BURSLEY

18th Senatorial District: Counties of Jackson (part), Lenawee (part), Livingston (part), and Washtenaw (part).

Republican, of Ann Arbor; born February 28, 1913, at Ann Arbor; graduate of the University of Michigan, A.B., 1934; Harvard Business School, M.B.A., 1936; post graduate work in international relations, George Washington University, 1953-54; graduate, Command and General Staff School, 1943; Army Industrial College, 1949; Armed Forces Information School, 1949; Army Psychological Warfare School, 1952; Armed Forces Special Weapons, 1953; married to Vivette Mumtaz in 1949; son, Philip II; service in World War II, three campaign stars, army commendation ribbon; service during Korean War, final rank Lieutenant Colonel, U.S. Army; National Headquarters, Selective Service System, 1940-41; military attache, Istanbul, Turkey, 1946-49; Joint U.S. Military Mission, Athens, Greece, 1949-52; Army Psychological Warfare Headquarters, Washington, 1953; United National Truce Supervision Organization in Palestine, Senior Military Advisor Israel-Jordan and Israel-Egypt Mixed Armistice Commissions, 1954; American consul and public affairs officer in charge of U.S. Information Agency Program in the Belgian Congo, French Equatorial Africa, Ruanda Urundi, Cameroons and Angola, 1955-57; World Wide Broadcasting Foundation, 1957; Assistant Director, University of Michigan Development Council, 1957-64; Member, U.S. Trade & Investment Mission to Cameroons and Ivory Coast, 1968; Episcopalian; member of the Sons of the American Revolution, past president, Washtenaw chapter; governor, Michigan Society of Mayflower Descendants, 1965-71; Advisory Board, Fund for the Improvement of Postsecondary Education; director, Michigan Partners of the Americas; member of Rotary, Veterans of Foreign Wars, American Legion, Economic Club of Detroit, Ann Arbor Chamber of Commerce, Harvard Business School Club of Detroit, The University of Michigan Alumni Club, International Platform Association, National Aero Club, Michigan Historical Society, Michigan Bicentennial Commission, Education Commission of the States, University of Michigan Medical Alumni Visiting Committee, 1974-; Michigan Artrain, Board of Directors, 1975-; Michigan Council of the Arts Long-Range Planning Committee, 1976-; Society of American Magicians, Foreign Policy Association; elected to the House of Representatives in 1960 and 1962 and to the State Senate in 1964 and to each succeeding session.

## GARY BYKER

23rd Senatorial District: Counties of Allegan, Barry (part), Kalamazoo (part), Kent (part), Ottawa, and Van Buren (part).

Republican, of Hudsonville; born November 27, 1920 at Alford, Iowa, graduate of Calvin College; did graduate work at Michigan State University in public opinion and propaganda; married in 1944 to the former Henrietta Blankespoor; children: Joanne (Mrs. Bruce Deckinga), Gaylen, Dave, Harlan, Carl and Gretchen; owner of Byker Realty Co.; served four and one half years in World War II, nearly two and one half years with 34th Infantry Division, overseas, holds Purple Heart and the Silver Star; former member, Ottawa County Board of Supervisors; treasurer and secretary, Hudsonville Christian School Board, six years; past president, Hudsonville Chamber of Commerce; chairman, Hudsonville City Planning Commission; chairman, Ottawa County Youth Home; member of the Hillcrest Christian Reformed Church, Farm Bureau and former member City Zoning Board of Appeals; DAV & VFW; elected to the State Senate to fill a vacancy on February 19, 1968; re-elected in 1970, and in 1974.

## ARTHUR CARTWRIGHT

5th Senatorial District: County of Wayne (part).

Democrat, of Detroit, born in Madison County, Alabama; former constable of Wayne County and bailiff of Common Pleas Court for the City of Detroit; member of Bethel A.M.E. Church, Detroit, life member of NAACP, member of TULC, Southwestern Democratic Club, 1st, 13th and 16th Congressional District Democratic organizations and the Boy Scouts of America; member, YMCA; elected to the House of Representatives in 1962 and to the State Senate in 1966, 1970 and 1974.

**DANIEL S. COOPER**

15th Senatorial District: County of Oakland (part).

Democrat, of Oak Park; born March 10, 1930 at Los Angeles, California; graduate of Detroit Central High School, Wayne State University, B. A. and J.D. degrees; married Hilda Winshall in 1957; children: Eve, Elizabeth and Joanne; attorney; private, U.S. Army, 1948-49; lieutenant, 1953-54; member of 18th District Democratic organization, and Wayne State University Alumnus; former member Oak Park Youth Guidance Board; elected to the House of Representatives in 1964, 1966 and 1968; elected to the State Senate in 1970 and 1974. Elected Democratic Whip 1971-74; presently Majority Floor Leader and Chairman, Senate Commerce Committee.

**GARY G. CORBIN**

25th Senatorial District: City of Flint (part), Counties of Genesee (part) and Shiawassee (part).

Democrat, of Clio; born December 13, 1941; Bachelor of Arts, Master of Divinity; married, wife Sheila, daughters Susan & Sally; Church of God, Anderson, Indiana; Urban League, Four C; 2 terms Genesee County Board of Commissioners; Michigan Society of Gerontology; elected to State Senate in 1974, Assistant Majority Leader of the Senate.

**ROBERT W. DAVIS**

37th Senatorial District: Counties of Alcona, Alger (part), Alpena, Antrim (part), Charlevoix, Cheboygan, Chippewa, Crawford, Delta (part), Emmet, Iosco (part), Kalkaska (part), Luce, Mackinac, Montmorency, Oscoda, Otsego, Presque Isle and Schoolcraft (part).

Republican, of Gaylord; born July 31, 1932 at Marquette; attended Northern Michigan University and Hillsdale College; graduate of Wayne State University College of Mortuary Science; married; children: Robert Jr., Lisa Ann and George H.; funeral director; former St. Ignace Councilman; St. Ignace "Man of Year," 1965; past president, Area Development Corporation; former member St. Ignace Planning Commission and the Upper Peninsula State Fair Board; member of the Michigan Funeral Directors Association and the Lions Club; Episcopalian; elected to the House of Representatives in 1966 and 1968; elected to the State Senate in 1970; elected Majority Whip in Senate; elected to State Senate in 1974; elected Senate Minority Leader by his colleagues in 1974. Senate Business Committee; Committee on Committees.

**ALVIN J. DeGROW**

28th Senatorial District: Counties of Huron, Lapeer (part), Sanilac, St. Clair (part) and Tuscola.

Republican, of Pigeon; born June 1, 1926 at Pigeon; attended Alma College; married to the former Judith Haist, August 25, 1946; children: David, Michael, Jane; owns and operates a variety store; served two years in the U.S. Navy, World War II as quartermaster third class aboard an LST; Methodist; member of Rotary Club, district governor, 1964-65; Chamber of Commerce, past president; Veterans of Foreign Wars; Tri-County Community College, executive committee; elected to the State Senate to fill a vacancy in 1968 and re-elected in 1970, 1974.

**HARRY A. DeMASO**

20th Senatorial District: Counties of Barry (part), Branch, Calhoun (except Lee Township), Hillsdale (part), St. Joseph (part), and from Jackson County the Township of Pulaski and from Kalamazoo County the Township of Charleston.

Republican, of Battle Creek; born February 24, 1921 at Battle Creek; graduate of Battle Creek High School; Argubright College of Business; attended Michigan State University; married Mary Jayne Hocott, June 7, 1947; children: David Ray and Thomas Eugene; supervisor, Battle Creek Township, 1952-65, supervisor, Calhoun County Board of Supervisors, 1952-65; State Representative, 45th District, 1957-66; past director, Battle Creek

Township Civil Defense; past president and secretary-treasurer, Calhoun County Chapter of Michigan Township Association; past director, Battle Creek Area Development Corporation; past chairman and executive director, Calhoun County Safety Commission; past chairman, Calhoun County Planning Committee; past general chairman, Michigan State Association of Supervisors Committee on the Constitutional Convention; member, Michigan Crime and Delinquency Council Technical Committee; former chairman, Battle Creek Area Government Council; former vice president, Argubright College of Business and member of board of trustees; church school teacher, Birchwood Methodist Church; adult education teacher, Lakeview High School; Methodist; served in U.S. Army Air Corps, 1943-45; past master Battle Creek Lodge No. 12, F.&A.M.; Past Secretary-Treasurer, Battle Creek Scottish Rite Club; Battle Creek Chapter No. 19, R.&A.M.; Battle Creek Commandery No. 33; Bryant Chapter No. 153, O.E.S.; 32nd Degree Mason, DeWitt Clinton Consistory; associate commander, the Commanders of the State of Michigan; awards from Battle Creek Enquirer & News; "George Award" for community service, 1957; Michigan Probate Judges and Juvenile Officials Association, 1962; Argubright College of Business "Alumni of the Year," 1962; Honorary Legion of Honor, International Order of DeMolay, 1964; Keep Michigan Beautiful, Inc., 1964; Fraternal Order of Police, Michigan Lodge, 1961 & 1966; Mich. Assoc. of Osteopathic Physicians & Surgeons "Honorary Lay Membership," 1969; American Legion Hospital, Inc. award for outstanding service, 1970; commissioned Kentucky Colonel, State of Kentucky, 1971; elected to the Senate in 1966, 1970 and 1974. Michigan International Council, Certificate of Leadership (International Affairs) 1976; Honorary Ambassador, Battle Creek Area Chamber of Commerce Ambassadors Club 1977.

#### JAMES DeSANA

11th Senatorial District: Counties of Monroe, Washtenaw (part), and Wayne (part).

Democrat, of Wyandotte; born October 6, 1930 at Wyandotte; graduate St. Patrick's high school — Wyandotte, Walsh Institute of Accounting and Business law; married the former Patricia Salliotte in 1962, children: Jimmy, Michelle, Leslie, Annette and Richard; St. Patrick's Catholic Church — Wyandotte; 4 years U.S. Navy; councilman City of Wyandotte 1957, mayor of Wyandotte 1961, Wayne County Commissioner 1969; Knights of Columbus, VFW, Jaycees — Distinguished Service Award 1961; elected to the Senate on January 13, 1976 to fill a vacancy.

#### ANTHONY A. DEREZINSKI

33rd Senatorial District: Counties of Lake (part), Manistee, Mason, Muskegon, Newaygo (part) and Oceana.

Democrat, of Muskegon; born Muskegon Feb. 17, 1942; Bachelor of Arts, magna cum laude, Marquette University 1964; Juris Doctorate, cum laude, University of Michigan Law School 1967; Master of Laws, Harvard Law School 1972; single; St. Thomas the Apostle Roman Catholic Church, Muskegon; attorney; Lieutenant, Judge Advocate General's Corps, U.S. Naval Reserve 1968-71; Board of Directors of Western Michigan Center for the Handicapped, Goodwill Industries of Muskegon, Muskegon Community Concert Association; Past Secretary, Muskegon County Bar Association; Fraternal Order of Police, Polish Falcons, Polish Roman Catholic Union, Pulaski Hall, P.N.A., Lt. Clement F. Derezinski V.F.W. Post, Catholic War Veterans, American Business Clubs, NAACP, American Bar Association, Planning and Research Council of the United Appeal of Muskegon County; elected to State Senate in 1974.

#### WILLIAM FAUST

13th Senatorial District: Counties of Washtenaw (part) and Wayne (part).

Democrat, of Westland; born March 29, 1929 at Bucyrus, Ohio; attended Indiana University, University of Michigan, A.B. degree, 1952; graduate work at Eastern Michigan University; Nankin Township trustee, 1960-63 and supervisor, 1963-65; elected to the State Senate in 1967, 1971, and 1975, elected majority leader 1977.



### JACK FAXON

7th Senatorial District: County of Wayne (part).

Democrat, of Northwest Detroit; B.S. & M. Ed. Wayne State University, M.A. in history University of Michigan; educator and former teacher in Detroit Public School System; delegate to Michigan Constitutional Convention in 1961-62, member of Board of Advisors of the School of Theology of the Diocese of Michigan, Anti-Defamation League, American Civil Liberties Union; Founders Society, Friends of Modern Art, Member Board of Directors — Michigan Workshop of Fine Prints; elected to Michigan House of Representatives in 1964, 1966 and 1968, elected to the Michigan Senate in 1970 and 1974.

Among his efforts while serving in the House of Representatives was the establishment of the Michigan Council for the Arts; the development of educational programs as related to drug abuse and smoking; the funding of Wayne County Community College; the development and funding of the statewide assessment program in education; an advocate in the area of consumer affairs; a revision of the state's conflict-in-interest laws; and the examination of the Michigan community college system. As a member of the Michigan Senate, he is President Pro Tempore, Chairman of the Education Committee, Vice Chairman of Health, Social Services & Retirement and Chairman of the Joint Legislative Committee on the Arts, a special committee for the advancement of the creative arts, and Labor Committee. As an educator, Senator Faxon serves as the Headmaster of The City School of Detroit, a private, non-profit, non-denominational, bi-lingual, elementary day school.

### WILLIAM B. FITZGERALD

1st Senatorial District: Counties of Macomb (part), and Wayne (part).

Democrat, of Detroit; born June 12, 1942 in Detroit; graduate of Austin Catholic Preparatory School, Western Michigan University, A.B., and Detroit College of Law, J.D.; single; attorney; Roman Catholic; Senate Majority Leader for the 78th Legislature; served two terms in the House of Representatives before being elected to the Senate in 1974; member of the Board of Trustees, Nazareth College, Kalamazoo, Michigan; member of American Bar Association, Detroit Bar Association, Detroit Economic Club, Delta Theta Phi (law fraternity), Detroit Junior Chamber of Commerce, and YMCA; past chairman of Select Joint House — Senate Committee to Investigate the Energy Crisis; past member of National Legislative Conference Special Committee on Energy and Judicial Article Review Commission. Chairman of the Senate Committee on Highways and Transportation. Also serves on the Senate Committee on Commerce.

At the end of the term as Majority Leader, was named one of the "Ten Outstanding Legislators in America" by the National Assembly of Governmental Employees. Other awards: Distinguished Alumnus Award from Western Michigan University Alumni Association; award from the Division of Minority Business Enterprise, Department of Commerce, for efforts in establishing the office statutorily.

### R. ROBERT GEAKE

14th Senatorial District: County of Wayne (part).

Republican, of Northville; born October 26, 1936 at Detroit; B.S. special education, M.A. guidance and counseling, Ph.D. education and psychology, all from University of Michigan; married to the former Carol L. Rens of Grand Rapids, 1962; children: Roger Rens, Tamara Lynne and William Rens; educational psychologist; elected trustee-at-large Schoolcraft Community College in 1969 and subsequently elected chairman; Presbyterian; National Education Association, life member; American and Michigan Psychological Associations; Northville Rotary Club; several historical and genealogical societies; elected to the House of Representatives in 1972, 1974, and 1976; elected to the Senate on March 23, 1977, to fill a vacancy.

### THOMAS GUASTELLO

9th Senatorial District: Counties of Lapeer (Almont Township), Macomb (part), and St. Clair (part).

Democrat of Macomb County; born in 1943, Detroit, Michigan; graduate of Lakeview High

School, St. Clair Shores; Michigan State University, B.A. in government honors program; 1963-1964 legislative intern with Lt. Governor T. John Lesinski; Detroit College of Law, Juris Doctor degree; finalist in the Ben Probe Moot Court Presentation; practicing attorney, 38200 South Gratiot Avenue, Mt. Clemens, Michigan; member of the State Bar of Michigan, American Bar Association, Macomb County Bar Association, St. Clair County Bar Association, Macomb County Prosecuting Attorneys Association, National Society of State Legislators; member of The Economic Club of Detroit; elected to the House of Representatives in 1968 to represent the 71st House District and re-elected in 1970 and 1972; served as chairman of the House Judiciary Committee, vice-chairman of the House Roads and Bridges Committee, member of the House Committee on Labor, member of the House Committee on Consumers and Agriculture, chairman of the House Committee on Conflict of Interest, vice-chairman of the Joint Legislative Committee on Conflict of Interest, ex-officio member of the Michigan Law Revision Commission; elected to the Senate in 1974; member of the Senate Appropriations Committee; chairman of Community Colleges subcommittee, vice-chairman of Corrections subcommittee, and vice-chairman of Regulatory subcommittee; member of the Senate Personnel Committee; Senate Assistant Majority Floor Leader; award recipient for outstanding legislative accomplishments from the Michigan District Judges Association and the Michigan Probate Judges; recipient of honorary lay membership to the Michigan Association of Osteopathic Physicians and Surgeons, Inc. for legislative leadership and service; recipient of the 1975 distinguished service award from the Utica Education Association.

### JEROME T. HART

34th Senatorial District: Counties of Bay and Saginaw (part).

Democrat, of Saginaw; born Saginaw July 23, 1932; graduate of St. Andrew High School, Saginaw, 1950, took correspondence courses in accounting through LaSalle Extension University; single; member St. Andrew Roman Catholic Church and Knights of Columbus; secretary-treasurer Quality Seal Oil Company 1954-60, owner, Tiny Town Infant & Children Clothing 1960, secretary-treasurer, Catholic Cemetery Commission 1960-62; treasurer, Saginaw County Democratic Committee 1956-60, president, Saginaw County Democratic Club 1958-60, member, Democratic State Central Committee 1959-63, 8th Congressional District Chairman 1962-64 — re-elected in 1974, executive assistant to the State Treasurer 1962-64, elected to the State Senate in 1964, 1966, 1970, and 1974 where he currently serves as the Chairman of the Senate Appropriations Committee; has served on the Appropriations Committee since first elected to the Senate and served as Democratic Floor Leader of the Senate from December 1973 to January 1975; member: Michigan Alcohol & Addiction Association, Welfare Study Commission, Michigan Commission on Criminal Justice, appointed to the Governors Action Committee on Corrections.

### JOHN CHARLES HERTEL

2nd Senatorial District: County of Wayne (part).

Democrat, of Harper Woods; born Detroit Dec. 4, 1946; Bachelor of Science Wayne State University, political science and education; married former Janice Amorello 1969, daughter Holly Christine, and son John Joseph; Roman Catholic; Teacher Warren Consolidated Schools; Wayne County Commissioner (youngest ever at time of election); elected to State Senate in 1974; Chairman joint legislative committee on Administrative Rules; Chairman Senate Committee on Agriculture and Consumer Affairs; Member Senate Committees on: Judiciary, and Municipalities and Elections; Member Senate Special Committee on Aging; Co-Chairman Budget Efficiency Savings to Taxpayers Committee (BEST); Member Urban Development Task Force of the National Conference of State Legislatures; Member Food Supply and Agriculture Task Force of the National Conference of State Legislatures; Michigan Representative to Carter-Mondale Agricultural Committee; Recipient of the Michigan Agricultural Conference distinguished service award; Recognized as Outstanding young man in Michigan by the Michigan Jaycees.

**DAVID S. HOLMES, JR.**

4th Senatorial District: County of Wayne (part).

Democrat of Detroit; born August 11, 1914 at Covington, Kentucky; attended Virginia State College, B.S. Degree; graduate study at the University of Michigan; married Avis Greene in 1962; employed as a UAW-AFL-CIO aide; member of Allen Temple A.M.E. Church, Detroit; Masons; Alpha Phi Alpha fraternity; 13th District Business and Professional Men's Club; Trade Union Leadership Council; Life member of the NAACP; Chairman of the Michigan Democratic Black Caucus; Delegate to the 1974 Democratic Charter Conference; Elected to the House of Representatives to fill a vacancy in 1959 and re-elected in 1960 to March, 1974. Elected to the Michigan State Senate, March, 1974 to fill a vacancy in the 4th district; re-elected in November, 1974 to present time. Chairman, subcommittee on Public Health; V.C. Democratic Caucus; Chairman, subcommittee on State Police.

**BILL S. HUFFMAN**

16th Senatorial District: County of Oakland (part).

Former councilman and mayor; veteran of U.S. Navy; member, Kiwanis Club; elected to the House of Representatives in 1962 and to each succeeding session of the Legislature; elected to the State Senate in November 1974.

**KERRY KAMMER**

17th Senatorial District: Counties of Livingston (part) and Oakland (part).

Democrat, of Pontiac; born Detroit August 13, 1948; St. Frederick High School, Pontiac, B.A. Wayne State University; married Carole Busch in 1972; St. Benedict's Catholic Church in Waterford; Knights of Columbus, Pontiac Jaycees and Oakland County Sportsmen's Club; Pontiac City Clerk 1973-74; elected to the State Senate in 1974.

**JOSEPH S. MACK**

38th Senatorial District: Counties of Alger (part), Baraga, Delta (part), Dickinson, Gogebic, Houghton, Iron, Keweenaw, Marquette, Menominee, Ontonagon and Schoolcraft (part).

Democrat, of Upper Peninsula.

**PATRICK H. McCOLLOUGH**

10th Senatorial District: County of Wayne (part).

Democrat, of Dearborn; received A.A. degree from Henry Ford Community College, B.A. degree Michigan State University, M.A. degree from the University of Michigan and J.D. degree from Detroit College of Law. Married, former teacher, President of Michigan State Young Democrats 1963-64, elected State Senator in November 1970, re-elected in November 1974. His attendance record is one of the best in the Senate. Chairman of the Senate Finance Committee, co-chairman of the BEST Committee, (Budget Efficiency Savings to Taxpayers), Chairman of Senate Committee for Secure Municipal Bond Financing, 1973 recipient of the Michigan United Conservation Club National Wildlife "Conservation Legislator of the Year" Award. Author of Michigan Clean Water Act, Voter Registration with License Act, Crime Victims Compensation Act, Political Reform Act and the Act creating the Michigan Commission on the Deaf.

**ART MILLER, JR.**

27th Senatorial District: County of Macomb (part).

Democrat, of Warren; born July 11, 1946 at Detroit; graduate of Warren High School and Eastern Michigan University; married, children: Holly Ann and Nicole Marie; Catholic; 3 terms on the Warren Council, Council President and Council Vice President; elected to the Senate on April 19, 1977, to fill a vacancy.

## EARL E. NELSON

24th Senatorial District: County of Ingham (northern portion).

Democrat, of Lansing, born August 29, 1937 at Emerson, Arkansas; graduate of Lincoln High in Arkansas and Michigan State University, bachelor's degree; married; children: Sondra, Donna and Laura; former Lansing teacher and department manager for Michigan State Chamber of Commerce; Protestant; founder and director of the Earl Nelson Singers; 1965 Negro Business and Professional Women's Club of Michigan, "Community Service Award," 1972 Michigan Minuteman Governor's Award, and 1973 National Association of Social Workers "Public Citizen of the Year" local and national awards, and Michigan Federation of Private Children's Agencies "Outstanding Public Service" award; elected to the House of Representatives in 1970 and 1972; elected to the State Senate in 1974.

## MICHAEL J. O'BRIEN

6th Senatorial District: County of Wayne (part).

Democrat, of Detroit, born Sept. 5, 1942; graduate of Salesian High School, Detroit; attended Michigan State University; single, member Our Lady Gate of Heaven; member Michigan Democratic Party, Local 2057 — AFSC & ME, Wayne County Employees Assn., Mic Mac Athletic Club, Crisis Club of Detroit, Ancient Order of Hibernians, LIFESPAN; 14 years of government service and experience with the Wayne County Road Commission; elected to State Senate in 1974.

## JOHN R. OTTERBACHER

32nd Senatorial District: Grand Rapids, Wyoming, Alpine, Plainfield, Walker.

Democrat, of Grand Rapids; born November 23, 1942 at Grand Rapids; B.A., psychology, Aquinas College, 1966; M.S., psychological research, at St. Louis University, 1968; additional graduate work in urban problems and political science at University of California and Michigan State University; Ph.D. clinical psychology, St. Louis University, 1970; married, 1966; 2 year internship, John Cochran V. A. Hospital, St. Louis, Missouri; Roman Catholic, St. Alphonsus, Grand Rapids; member, Michigan Democratic Party; member, executive committee Kent Co. Democratic Party; chairman, comm. on legislation, Kent Co. Democratic Party; member of Advisory Board, Kent County Association for Retarded Children; United Fund Section Chairman, Government Division, 1973; West Michigan Environmental Action Council; Polish Heritage Society; Grand Rapids Historical Society; Ancient Order of Hibernians; served as chairman, civil rights committee; vice chairman, mental health committee; member, urban affairs and youth care committees; elected to the State Senate, November, 1974; chairman: health, social services and retirement committee; chairman: special Senate committee to investigate nursing homes; vice chairman: committees on agriculture and consumer affairs, and veterans affairs. Member of Joint Committee on Aging.

## DAVID A. PLawecki

12th Senatorial District: County of Wayne (part).

Democrat, of Dearborn Heights; born November 8, 1947 at Detroit; graduated Dearborn Divine Child High School and General Motors Institute, B.S. in Mechanical Engineering; married to former Linda R. Chantres, 1970, son: Brent David; member of Jaycees, Goodfellows, Polish Legion of American Veterans, Knights of Columbus, G.M.I. Alumni Association, Kingswood-Crestwood Civic Association, Polish American Congress, Taylor Democratic Club, Allen Park Democratic Club, Southgate Democratic Club, Dearborn Heights Democratic Club, and Inkster Progressive Democratic Club also past Chairperson 15th Congressional District Young Democrats 1968-69; member and past Vice Chairman Dearborn Heights Democratic Club; Executive Board member and past treasurer 15th District Democratic Organization; Executive Board member 16th District Democratic Organization; Roman Catholic Church; elected to the Michigan State Senate in 1970 and 1974.

### HAROLD JOSEPH SCOTT

29th Senatorial District: County of Genesee (part).

Democrat, of Flint; born Flint Oct. 5, 1938; St. Mary's High School (Flint), A.B. 1960 University of Michigan, M.A. American history Wayne State University 1964, 26 hours beyond M.A., received National Defense Education Agency grant 1966 — American history; married 1960, wife, Jacqueline I., children: Harold A., John C., Ann Marie, and Michael; teacher 11 years — grade school, high school, junior college; Knights of Columbus, former Board of Education member St. Luke, former officer in Toastmaster's International, former officer in Michigan Education Association Political Action Organization (SEPAC 25), former elected Executive Board member of Genesee County Democratic Party; member YMCA, Croatian Slovene Club, Fraternal Order of Eagles, involved in various civic organizations and drives; hobbies: swimming, camping, jogging and chess; elected to House of Representatives in 1972, 1974 and 1976; member of House Taxation, Policy, Labor & Retirement Committees 1973-74, member of House Economic Development, Taxation, Civil Rights, vice chairman of Labor Committee and member Educational Task Force 1975-76; elected to the Senate on March 23, 1977 in a special election to fill a vacancy, chairman of Senate Veterans' Affairs, vice-chairman of Tourist Industry Relations, member of Finance and Health, Social Services and Retirement committees 1977-78.

### JOSEPH M. SNYDER

26th Senatorial District: Counties of Macomb (part), and Wayne (part).

Democrat, of St. Clair Shores; born March 18, 1915, at Barberton, Ohio; attended Wilbur Wright High School and Wayne State University; married Rita Kanthak in 1942; children: Donna, Joseph II and Ronald; International Representative, UAW; former councilman, St. Clair Shores; former Macomb County Supervisor; Constitutional Convention delegate, elected to the House of Representatives in 1963 and to each succeeding session and elected to State Senate in 1975.

### JOHN F. TOEPP

36th Senatorial District: Counties of Antrim (part), Benzie, Clare, Grand Traverse, Isabella, Kalkaska, Lake (part), Leelanau, Mecosta, Missaukee, Montcalm (part), Newaygo (part), Osceola and Wexford.

Republican, of Cadillac; born September 25, 1920, at Mansfield, Ohio; graduate of St. Augustine High School, Kalamazoo; Mahar Business College; attended Western Michigan University; married former Catherine Boynton; children: William, Douglas, Michael, Bonnie, Theresa, Tickey, Sandra; Broadcaster of Cadillac High School football and basketball and Michigan High School Basketball Finals for Radio Station WATT and Paul Bunyan Network; member: Cadillac Kiwanis, State Fraternal Order Police, Michigan Sports Sages; former: State Representative (Wexford-Manistee, 1963-64), professional basketball announcer for National Basketball League, Public Relations Director of State GOP Central Committee, Executive Manager of Cadillac Area Chamber of Commerce, Michigan Bear Hunters Board of Directors; elected to the Senate in 1966, 1970, and again in 1974.

Member of Senate Appropriations Committee, Committee on Committees, National Council of State Governments, Senate Republican Campaign Committee; elected Senate Republican Majority Whip in 1968; elected Senate Republican Floor Leader in 1970, 1971, 1975 and again in 1977 for a two year term.

### ROBERT VANDER LAAN

31st Senatorial District: Counties of Barry (part), Eaton (part), Ionia, Kent (part), and Montcalm (part).

Republican, of Kentwood; born Kentwood June 4, 1930; A.B. 1952 Calvin College, M.A. 1959 University of Michigan, candidate 1972 for Ph.D. in education Michigan State University; married Mildred Bouma in 1951; children: Mrs. Linda Beth Slotsema and Robert J.; member and catechism instructor Millbrook Christian Reformed Church; former high

school teacher and part-time instructor in state and local government, political parties, and public opinion and pressure groups at Calvin College, former clerk, trustee, and supervisor of Paris Township (now city of Kentwood); member: Lotus Club, Michigan Townships Association, Michigan Partners of the Americas, named "Man of the Year" 1964 by City of Wyoming Jaycees; local precinct delegate since 1952, delegate to all state conventions since 1952, member of Kent County Republican Executive Committee since 1962, alternate delegate to Republican National Convention 1972, Republican candidate for 5th Congressional District 1974; member of Executive Committee of National Conference of State Legislative Leaders 1972 — reelected 1973, 1974; Director, The State Legislative Leaders Foundation; member of Inter-American Affairs Advisory Commission of the U.S. State Department 1972-73; former vice-chairman of Executive Committee of the Council of State Governments, past president of Midwestern Conference of the Council of State Governments; elected to State Senate in 1962 and to each succeeding session (senior Republican member), former Senate Majority Leader 1970-74, former chairman of Senate Committees on Labor and Senate Business, present Assistant Minority Leader, present member of Senate Committees on Conservation, State Affairs, and Judiciary Committee, and Legislative Council.

### JOHN A. WELBORN

21st Senatorial District: Counties of Cass (part), Kalamazoo (part), St. Joseph (part), and Van Buren (part).

Republican, of Kalamazoo; born December 20, 1932 at Kalamazoo; graduated from Richland High School; married, 1952; children: Kayla, Kami, John; township supervisor; Kalamazoo County Board of Supervisors; Kalamazoo Soil Conservation District dir.; volunteer fireman; chairman of Metro Council; Kalamazoo Townships Assoc. member; Chamber of Commerce Industrial Development committee member; Kalamazoo Republican Executive Committee; 2 years Naval Reserve; Protestant; elected to the House of Representatives in 1972, and to State Senate in 1974.

### ROBERT D. YOUNG

35th Senatorial District: In Bay County: City of Midland (Bay County portion), Counties of Arenac, Gladwin, Gratiot (part), Iosco (part), Midland, Ogemaw, Roscommon, and Saginaw (part).

Republican, of Saginaw; born March 7, 1934 in Saginaw County; attended Saginaw High School and Michigan State University; married; children: Mary Jo, Barbara and Gary; farmer and home construction business; Spaulding Township supervisor; Saginaw County commissioner; army reserve, 1957-63; member of Bridgeport Community Church, Salina Lodge F.&A.M., Bay City Scottish Rite Consistory, Elf Khurafeh Shrine, former Bridgeport Jaycees and Michigan Farm Bureau; elected to the House of Representatives in 1970 and 1972, reelected in 1973; elected to the Michigan Senate in 1974.

### HAL W. ZIEGLER

19th Senatorial District: Counties of Hillsdale (part), Jackson (part), Lenawee (part) and Washtenaw (part).

Republican, of Jackson; born August 23, 1932 at Jackson; graduate of Jackson High School, Hillsdale College, A.B. and Wayne State University, LL.B.; married; children: Harry Martin, Terence Mace and Hallie Patricia; attorney; former assistant prosecuting attorney and circuit court commissioner; U.S. Army, 1954-56; Episcopalian; member of the Jackson and State Bar Associations; elected to the House of Representatives in 1966-1974; first elected to the State Senate in 1974.

### CHARLES O. ZOLLAR

22nd Senatorial District: Counties of Berrien, Cass (part) and Van Buren (part).

A Benton Harbor farmer and industrialist, represents the people of the twenty-second

Senatorial district. The Benton Harbor Republican was born in Chicago on January 6, 1915, and is a graduate of Michigan State University's Continuing Education Program.

Senator Zollar is the owner and manager of Zollar Farms, a southwestern Michigan fruit growing operation; he also serves as president of the Zollar Nurseries, Inc., and is a past chairman of the Benton Harbor Market Board and a former member of the Michigan Commission on Agriculture. He has been honored by The Michigan Agricultural Conference for his outstanding contributions to Michigan agriculture, and holds that organization's coveted Legislative Service to Agriculture Award. He received the Walter F. Patenge Foundation's Medal of Public Service in 1971, and was named "Agricultural Man of the Year" for 1972 by the Michigan Frozen Food Packers Association.

The Senator serves as president of Aircraft Components, Inc., an aircraft parts manufacturing firm, and as president of Riverside Enterprises, a Benton Harbor real estate firm.

Charles O. Zollar is a veteran of World War II, a certified aviation instructor, a member of the Aircraft Owners and Pilot's Association. He is married, and is the father of two daughters: Robin and Michele. He is also past president of the Pearl School Board, and holds an honorary degree from Berrien County's Lake Michigan College, presented to him in appreciation of his contributions to the growth and development of that institution. The Senator also holds an honorary doctorate from Siena Heights College.

Senator Zollar is a member of Saran Lutheran Church, Rotary, The American Legion, Fraternal Order of Police, and the Farm Bureau. He served as honorary chairman for the American Cancer Society's 1972 Berrien County Crusade.

The Senator was elected to the State Senate in 1964, 1966, 1970 and 1974, and served as chairman of the Senate Appropriations Committee from 1968 to 1974. In 1970, he was elected Republican Caucus Chairman by his Senatorial colleagues and again in 1974 and 1977.