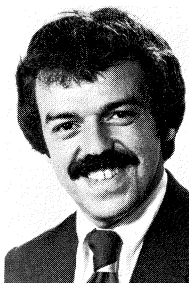
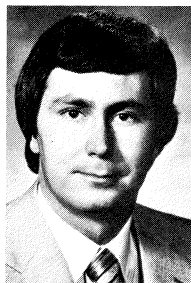


MEMBERS OF THE SENATE



PHILLIP J. ARTHURHULTZ
33rd District



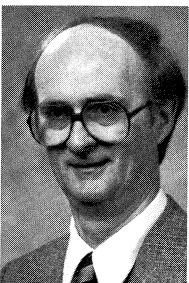
JAMES A. BARCIA
34th District



CONNIE BERUBE BINSFELD
36th District



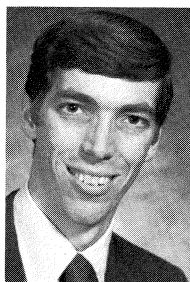
BASIL W. BROWN
2nd District



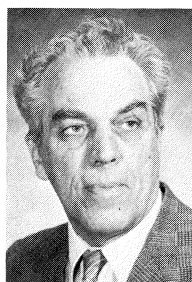
JOE CONROY
25th District



GARY G. CORBIN
29th District



ALAN L. CROPSEY
30th District



HARMON G. CROPSEY
21st District



DOUG CRUCE
16th District



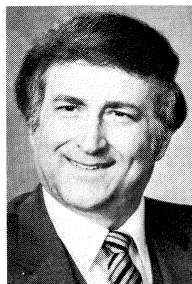
DAN L. DeGROW
28th District



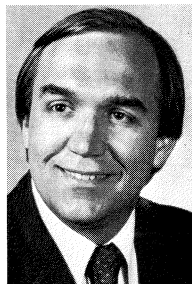
HARRY A. DeMASO
20th District



JAMES DeSANA
7th District

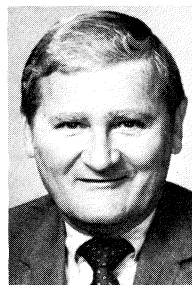


GILBERT J. DiNELLO
26th District

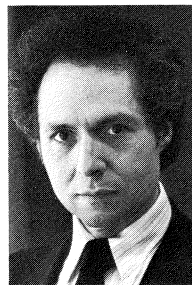


JOHN M. ENGLER
35th District

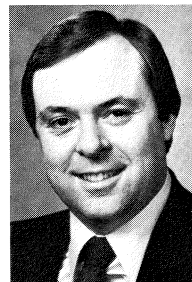
MEMBERS OF THE SENATE



WILLIAM FAUST
12th District



JACK FAXON
15th District



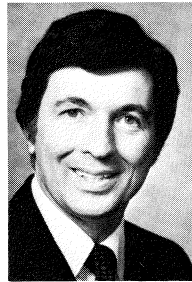
RICHARD D. FESSLER
17th District



ED FREDRICKS
23rd District



HARRY GAST
22nd District

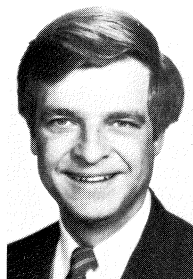


R. ROBERT GEAKE
6th District

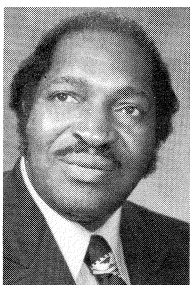
MEMBERS OF THE SENATE



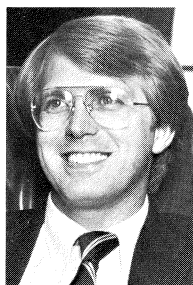
JEROME T. HART
14th District



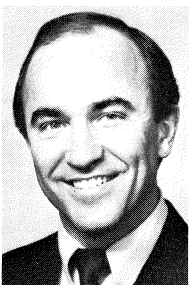
PAUL B. HENRY
32nd District



DAVID S. HOLMES, JR.
4th District



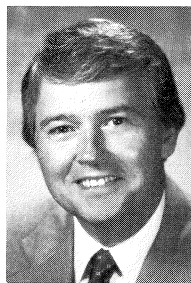
MITCH IRWIN
37th District



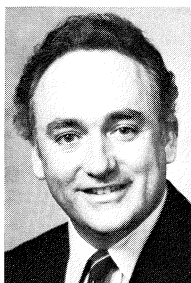
JOHN FRANCIS KELLY
1st District



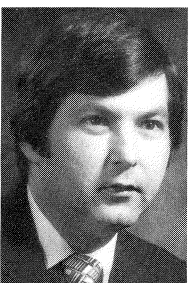
JOSEPH S. MACK
38th District



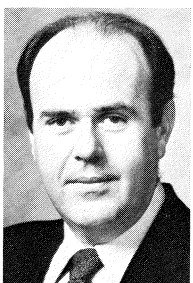
PHILIP O. MASTIN
8th District



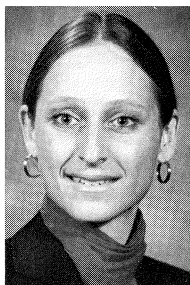
PATRICK H. McCOLLOUGH
10th District



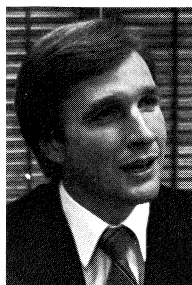
ART MILLER, JR.
27th District



MICHAEL J. O'BRIEN
5th District



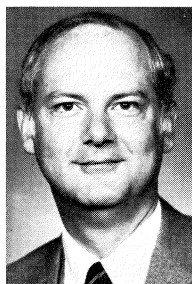
LANA POLLACK
18th District



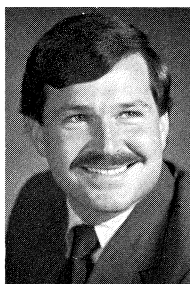
DICK POSTHUMUS
31st District



WILLIAM A. SEDERBURG
24th District



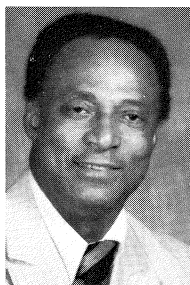
DAVID M. SEROTKIN
9th District



NORMAN D. SHINKLE
11th District



NICK H. SMITH
19th District



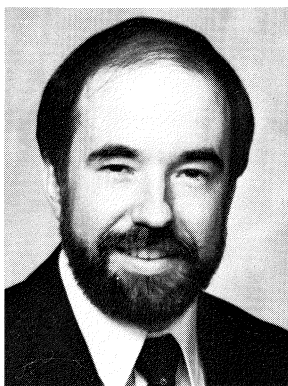
JACKIE VAUGHN III
3rd District



ROBERT A. WELBORN
13th District



MEMBERS OF THE SENATE



WILLIAM C. KANDLER
Secretary of the Senate

SENATORS

PHILLIP J. ARTHURHULTZ

33rd Senatorial District: Counties of Mason, Muskegon, Newaygo, and Oceana.

Republican, of Whitehall; born June 16, 1947; single; alumnus, Montague Public Schools, 1952-65, Muskegon Community College, 1965-67, Albion College, 1968-71; attended leadership and governmental training courses at Michigan State University and the University of Michigan; Page to Michigan State House of Representatives, 1967-68; Assistant to Congressman Guy VanderJagt, 1972-73; Director of the Michigan Senate Republican Staff, 1973-78; selected an "Outstanding Young Man of America"; member of Farm Bureau, Jaycees, Eagles, Old Newsboys, Urban League, NAACP, and National Rifle Association; elected to the State Senate in 1978 and 1982; elected Senate Minority Whip, 1979-82; elected Senate Minority Floor Leader, 1983-84.

JAMES A. BARCIA

34th Senatorial District: Counties of Arenac, Bay, Gladwin, Huron, and Tuscola.

Democrat, Bay City; born February 25, 1952; graduated Bay City Central High School; B.A. Saginaw Valley State College; former community services coordinator Michigan Community Blood Center; former member Saginaw Valley State College Board of Control ex-officio; former staff assistant U.S. Senator Philip Hart; former administrative assistant State Representative Donald Albosta; elected to House of Representatives in 1976 and to each succeeding session; served on the following committees — Colleges & Universities — Conservation, Environment & Recreation — Constitutional Revision & Women's Rights — Corrections — Education — Liquor Control — Tourism Industry Relations — Joint Legislative Subcommittee on Higher Education Issues; past Chair Drainage Committee; past Chair Public Works Committee; Majority Whip; author of the "Whistleblowers' Protection Act". Elected to State Senate 1982; Chairman of Agriculture, Consumers' and Veterans' Affairs; Vice-Chair of State Affairs and Transportation Committee; serves on Commerce Committee; Assistant Majority Whip.

CONNIE BERUBE BINSFELD

36th Senatorial District: Counties of Alcona, Alpena, Benzie, Crawford, Iosco, Kalkaska, Lake, Leelanau, Manistee, Missaukee, Montmorency, Ogemaw, Oscoda, Presque Isle, Roscommon, and Wexford.

Republican, of Maple City; born Munising April 18, 1924; B.S., secondary education teaching certificate, Siena Heights College (Adrian), graduate study Wayne State University; Honorary Doctor of Humane Letters, Siena Heights College, Northwestern Michigan College Fellow; married John E. Binsfeld in 1947, children John, Gregory, Susan, Paul and Michael; St. Rita-St. Joseph Church; Grand Traverse Women's Republican Club, League of Women Voters, Glen Lake Women's Club, American Mothers Association, Crooked Tree Council Girl Scouts; two terms Leelanau County Commissioner; named Michigan Mother of the Year 1977; elected to House of Representatives 1974, 1976, 1978 and 1980; elected Assistant Republican Leader 1979 and 1981; Vice Chairman, House Policy; Member, Marine Affairs, Public Health and Legislative Council; Associate President Pro Tempore of the Senate.

BASIL W. BROWN

2nd Senatorial District: County of Wayne (part).

Elected to the Michigan Senate in 1956. He has been re-elected as State Senator each election since: 1958, 1960, 1962, 1964, 1966, 1968, 1970, 1974, 1978 and 1982. In 1964-1966, he served as Democratic Majority Floor Leader and Chairman of the Senate Judiciary Committee. He was reappointed Chairman of the Senate Judiciary Committee in 1974 and every year since. He is also Dean of the Senate, a member of the Natural Resources and Environmental Affairs Committee, Commissioner of the National Conference of Commissioners on Uniform State Law, Commissioner of the Michigan Commission on Criminal Justice, and an ex-officio member of the Law Revision Commission.

Born March 20, 1927, in Vandalia, Michigan, his family moved to Battle Creek, Michigan in 1929. He is a graduate of Battle Creek's Central High School and won varsity letters in football and track while at Central. A veteran of the United States Navy, he was honorably discharged in 1946 after serving in the China Seas, Okinawa and the Philippines.

He has a Bachelor of Arts Degree from Western Michigan University and both a J.D. and a LL.B. from the University of Michigan Law School. He passed the Michigan State Bar in 1952 and has practiced law since 1953.

Senator Brown is married to Ermajeanne Brown, a retired school teacher for the Detroit Public Schools. They have one daughter, Lisa. His father is deceased. His mother lives in Kalamazoo, Michigan, and is retired from the Veteran's Administration, Fort Custer, Michigan. He has a brother who is a Civil Engineer for the New Jersey State Highway Department.

In addition to his legislative duties, Senator Brown is a member of Kappa Alpha Psi Fraternity, the State Bar of Michigan, the Wolverine Bar Association, the American Bar Association, T.U.L.C. and a Life Member of the N.A.A.C.P.

JOE CONROY

25th Senatorial District; County of Genesee (part).

Democrat of Flint; born July 24, 1934 at Battle Creek; married 1962 to the former Mary Ann Macksood, children: Colleen 19, Kevin 17, Kelly 16, Tim 15, Christine 13. A real estate broker and residential builder; Flint Charter Revision Commissioner, Genesee County Commissioner; elected to the House of Representatives in 1976; to the Senate in 1982.

GARY G. CORBIN

29th Senatorial District: County of Genesee (part).

Democrat, of Clio; born December 13, 1941; Bachelor of Arts, Master of Divinity; married, wife Sheila, daughters Susan & Sally; 2 terms Genesee County Board of Commissioners; elected to State Senate in 1974, Majority Floor Leader of the Senate.

ALAN L. CROPSEY

30th Senatorial District: Counties of Clinton, Livingston, and Shiawassee.

Republican, of DeWitt; born June 13, 1952 at Paw Paw; graduate of DeWitt High School and Bob Jones University; B.S. degree; Thomas M. Cooley Law School, J.D. degree.

Attorney; State Bar of Michigan; Gideons teacher, Member of Grove Bible Church in St. Johns; Kiwanis, American Legislative Exchange Council; selected for "Who's Who in American Colleges and Universities" 1975; elected to the House of Representatives in 1978 and 1980; elected to the State Senate in 1982; honorary member of the DeWitt Lions Club; appointed by President Reagan as the youngest member of the Intergovernmental Advisory Council on Education to officially advise the President, the Congress, and the U.S. Department of Education on educational issues; serves with his father, Harmon Cropsey, as the first son-father team in the Michigan State Senate.

Married, November 24, 1978, to the former Erika Rumminger of Greenville, South Carolina who served as a missionary to France from 1975 to 1979, under the Baptist Mid-Missions; two sons, Joel and Gabriel.

HARMON G. CROPSEY

21st Senatorial District: Counties of Cass, Kalamazoo (part), and St. Joseph.

Republican of Cass County; Graduate of Goodenough School, Dowagiac High School, attended M.S.U., graduated Iowa State University, 1938, B.S. in animal science and minor in economics. Member Phi Kappa Phi Honorary Fraternity. 4-H Extension Agent Tama and Benton Counties Iowa, 1939; Farm manager, Iowa Canning Co. 1940-41. Four years in Navy Air Corps, Pilot and Navigator, flew 43 missions out of England with Bombing Squadron 110, 1943 and 1944, awarded Air Medal and Distinguished Flying Cross.

Married to the former Ruth Marian Lindsay, 1943, six living children: Dr. Robert Cropsey, M.D., David, State Senator Alan Cropsey, Carolyn, George and Lindsay Jo.

Farmed in Iowa 1946-1951. Cass County farmer, active in Farm Bureau and civic affairs. Served on Board of Geneva School and Lewis Cass Intermediate District. Served two years

Michigan Right-to-Life PAC. Presently member of Board of Policy of the American Security Council; member of Friends of Michigan Schools; member Efton Jones Post 206 of American Legion, Cassopolis; member of the Marcellus Post of Veterans of Foreign Wars. Member of the Cass County Historical Society, the Michigan Pork Producers, the National Rifle Association and Volinia Baptist Church.

Elected State Representative August 5, 1981 in Special Election to fill vacancy created when Mark Siljander was elected to Congress. Elected to the State Senate in November, 1982.

DOUG CRUCE

16th Senatorial District: County of Oakland (part).

Republican, of Troy; born July 1, 1947; graduate Warren High School, BA Wayne State, MA Villanova University; married 1969, wife, Anne, children: Jean, Laura, and Charles; Roman Catholic; U.S. Marine Corps 1966-1969; Troy Jaycees, American Legion, Marine Corps League; elected to the House of Representatives in 1980; elected to the Senate in 1982.

DAN L. DeGROW

28th Senatorial District: Counties of Lapeer, Sanilac, and St. Clair.

Republican, of Port Huron; born June 28, 1953 at Ann Arbor; graduate Port Huron Northern High School 1971, St. Clair County Community College 1971-1973, Michigan State University 1973-1975, phi beta kappa, Wayne State University juris doctor 1975-1978; married Cheryl Simpson, February 7, 1981; one daughter, Allison; Methodist; attorney; NAACP, Association for Retarded Citizens, Republican Party Executive Committee for St. Clair County, State Bar Association of Michigan, St. Clair County Bar Association, American Bar Association; elected to the House of Representatives in 1980; elected to the Senate in 1982.

HARRY A. DeMASO

20th Senatorial District: Counties of Calhoun, Eaton, and Ingham (part).

Republican, of Battle Creek; born February 24, 1921 at Battle Creek; graduate of Battle Creek High School; Argubright College of Business; attended Michigan State University; married Mary Jayne Hocott, June 7, 1947; children: Dr. David Ray and Thomas Eugene; supervisor, Battle Creek Township, 1952-65, supervisor, Calhoun County Board of Supervisors, 1952-65; State Representative, 45th District, 1957-66; past director, Battle Creek Township Civil Defense; past president and secretary-treasurer, Calhoun County Chapter of Michigan Township Association; past director, Battle Creek Area Development Corporation; past chairman and executive director, Calhoun County Safety Commission; past chairman, Calhoun County Planning Committee; past general chairman, Michigan State Association of Supervisors Committee on the Constitutional Convention; member, Michigan Crime and Delinquency Council Technical Committee; former chairman, Battle Creek Area Government Council; former vice president, Argubright College of Business and member of board of trustees; church school teacher, Birchwood Methodist Church; adult education teacher, Lakeview High School; Methodist; served in U.S. Army Air Corps, 1943-45; past master Battle Creek Lodge No. 12, F.&A.M.; Past Secretary-Treasurer, Battle Creek Scottish Rite Club; Battle Creek Chapter No. 19, R.&A.M.; Battle Creek Commandery No. 33; Bryant Chapter No. 153, O.E.S.; 32nd Degree Mason, DeWitt Clinton Consistory; associate commander, the Commanders of the State of Michigan; awards from Battle Creek Enquirer & News; "George Award" for community service, 1957; Michigan Probate Judges and Juvenile Officials Association, 1962; Argubright College of Business "Alumni of the Year," 1962; Honorary Legion of Honor, International Order of DeMolay, 1964; Keep Michigan Beautiful, Inc., 1964; Fraternal Order of Police, Michigan Lodge, 1961 & 1966; Mich. Assoc. of Osteopathic Physicians & Surgeons "Honorary Lay Membership," 1969; American Legion Hospital, Inc. award for outstanding service, 1970; commissioned Kentucky Colonel, State of Kentucky, 1971; elected to the Senate in 1966, 1970, 1974, 1978 and 1982. Michigan International Council, Certificate of Leadership (International Affairs) 1976; Honorary Ambassador, Battle Creek Area Chamber of Commerce Ambassadors Club 1977; Michigan Tobacco & Candy Distributors & Vendors Association; "Golden Ambassador Award" 1979; Michigan Society of Planning Officials "President's Award" 1979; Michigan "International Council Award"; Michigan International Citizen 1979 (Business Industry); Kiwanis

Cosmopolitan Award for improving international relations (1979); Michigan Industrial Developers Association "Industrial Development Award" 1982.

JAMES De SANA

7th Senatorial District: County of Wayne (part).

Democrat, of Wyandotte; born October 6, 1930 in Wyandotte; graduate of St. Patrick's High School — Wyandotte; attended Walsh Institute of Accounting and Business Law; married the former Patricia Salliotte in 1962, children: Jim, Jr., Michele, Leslie, Annette and Richard; member of St. Patrick's Catholic Church — Wyandotte; 4 years U.S. Navy; councilman City of Wyandotte 1957 to 1961, mayor of Wyandotte 1961 to 1965, Wayne County Commissioner 1969 to 1975; Knights of Columbus, VFW, Jaycees — Distinguished Service Award 1961; elected to the Senate on January 13, 1976 to fill a vacancy.

GILBERT J. DiNELLO

26th Senatorial District: County of Macomb (part).

Democrat, of East Detroit; born February 28, 1935 in Detroit; B.S. business administration, University of Detroit; American Institute of Banking; University of Michigan Extension Service in real estate finance, real estate law, real estate appraisal I and II and real estate building; single; commercial real estate broker; former administrative assistant in the commercial and residential mortgage department of Michigan National Bank of Detroit; past precinct delegate; past membership chairman of Macomb County Democratic Committee; served in Michigan Army National Guard; Roman Catholic; member of Executive Board for Macomb County Democratic Committee; 14th Congressional District Committee; Knights of Columbus, Leo XIII, East Detroit; Sons of Columbus, Detroit Council No. 91; Fraternal Order of Eagles, Aerie No. 2495, East Detroit; International Association of Lions Clubs, East Detroit; Club Pacentro; member, National Rifle Association; Americans of Italian Origin Society; Board Member of Project HOPE League; elected to the House of Representatives in 1972, 1974 and 1976; elected to the State Senate in 1978 and in 1982.

JOHN M. ENGLER

35th Senatorial District: Counties of Clare, Gratiot, Isabella, Mecosta, Midland, and Osceola.

Republican, of Mt. Pleasant; born October 12, 1948 at Mt. Pleasant; graduate of Beal City High School and Michigan State University, B.S. in Agricultural Economics, Cooley Law School, J.D.; married to Colleen House Engler; delegate, White House Conference on Youth, 1971; recipient of the Distinguished Service to Agriculture award from the Michigan Agriculture Conference; one of the Five Outstanding Young Men award recipients from Michigan Jaycees, 1982; Roman Catholic; member of the Knights of Columbus; Farm Bureau; past member of the Board of Trustees of the Michigan YMCA and Vice Chairman of the State Youth and Government Committee; past member of the Board of Directors of the College of Agriculture and Natural Resources Alumni Association at Michigan State University; present Senate Republican Leader; elected to the House of Representatives in 1970, 1972, 1974, 1976, and to the Michigan Senate, 1978 and 1982.

WILLIAM FAUST

12th Senatorial District: County of Wayne (part).

Democrat, of Westland; born March 29, 1929 at Bucyrus, Ohio; attended Indiana University, University of Michigan, A.B. degree, 1952; graduate work at Eastern Michigan University; Nankin Township trustee, 1960-63 and supervisor, 1963-65; elected to the State Senate in 1967, 1971, 1975, 1979, and 1983, elected majority leader 1976.

JACK FAXON

15th Senatorial District: County of Oakland (part).

Democrat of Southfield; B.S. & M. Ed. Wayne State University, M.A. in history University of Michigan; educator and former teacher in Detroit Public School System; delegate to Michigan Constitutional Convention in 1961-62; commissioner of the Education Commission of the States; member of the Anti-Defamation League; member of the Founder's Society,

Detroit Institute of Arts; elected to Michigan House of Representatives 1964, 1966 and 1968, elected to the Michigan Senate in 1970, 1974, 1978 and 1982.

Among his efforts while serving in the House of Representatives was the establishment of the Michigan Council for the Arts; the development of educational programs as related to drug abuse and smoking; the development and funding of the statewide assessment program in education; an advocate in the area of consumer affairs; a revision of the state's conflict-in-interest laws; and the examination of the Michigan community college system. As a member of the Michigan Senate, he is a member of the Appropriations Committee, Chairman of the K-12 Subcommittee, Chairman of the Retirement Subcommittee; is Vice-Chairman of the Education Committee; Chairman of the Board of the Joint Legislative Retirement System; and Chairman of the Joint Legislative Committee on the Arts, a special committee for the advancement of the creative arts. As an educator, Senator Faxon serves as the Headmaster of Lycee International, a private, non-profit, preschool and K-12.

RICHARD D. FESSLER

17th Senatorial District: County of Oakland (part).

Republican, of West Bloomfield; born Detroit May 17, 1943; Dublin Elementary School (White Lake Twp.), Walled Lake Central High School, Oakland Community College (business, economics and accounting); B.A. social sciences and English, secondary education Oakland University, Juris Doctorate degree 1972 University of Detroit Law School; married May 8, 1971, children Richard, Katherine, Robert and Elizabeth; Protestant; attorney; member: American Bar Association, State Bar of Michigan, and Oakland County Bar Association, member: District Court Committee State Bar Association 1976-78, Michigan Law Revision Commission, Commissioner of the National Conference of Commissioners on Uniform State Laws, president Oakland County Republican Lincoln Club 1975; Assistant Township Attorney for Charter Township of Waterford 1973-74, 1973 Assistant Prosecuting Attorney in Oakland County, and Chief Deputy Treasurer of Oakland County 1972; practicing attorney with offices in Bloomfield Hills; elected to House of Representatives in 1974 and served until 1982; elected to the State Senate in 1983; Senate Republican Whip, 1983-84.

ED FREDRICKS

23rd Senatorial District: Counties of Allegan and Ottawa (part).

Republican, of Holland; born in Holland, June 27, 1942; 1964 B.A. in Economics from Calvin College; 1967 M.A. in History, Western Michigan University; 1968 M.A. Sociology, Western Michigan University; 1967 assistant to U.S. Rep. Guy VanderJagt; 1968 executive director Michigan Citizens for Nixon; 1968 author of book, *MacArthur: His Mission and Meaning*; 1970-72 served as American Vice Consul with the American Embassy, Seoul, Korea; 1972-74 Political Officer, Bureau of International Organization Affairs, U.S. Department of State; 1974 elected to first term in the Michigan House of Representatives; 1976 re-elected to second term; 1978-79 Chairman, Michigan Conservative Union; 1978 elected to Michigan State Senate; re-elected in 1982; single; Faith Christian Reformed Church, Holland.

HARRY GAST

22nd Senatorial District: Counties of Berrien and Van Buren.

Republican, of St. Joseph; born September 19, 1920 at St. Joseph; attended St. Joseph Public High School and Michigan State University, 2 years; married in 1945; children: Barbara, Linda and Dennis; former supervisor, Lincoln Township; farmer; former treasurer, Lincoln Township, 18 years, former vice-chairman, County Board of Public Works and County Board of Health; member, Farm Bureau, Lions, Honorary Jaycees; former member, Lakeshore School Board; Baptist; elected to the House of Representatives in 1970, 1972, 1974, 1976 and to the State Senate in 1978 and 1982; member of the Senate Appropriations Committee; Rep. V.C.; Caucus Chairman.

R. ROBERT GEAKE

6th Senatorial District: County of Wayne (part).

Republican, of Northville; born October 26, 1936 at Detroit; B.S. special education, M.A.

guidance and counseling, Ph.D. education and psychology, all from University of Michigan; married to the former Carol L. Rens of Grand Rapids, 1962; children: Roger Rens, Tamara Lynne and William Rens; educational psychologist; elected trustee-at-large Schoolcraft Community College in 1969 and subsequently elected chairman; Presbyterian; National Education Association, life member; American and Michigan Psychological Associations; Northville Rotary Club; several historical and genealogical societies; elected to the House of Representatives in 1972, 1974, and 1976; elected to the Senate on March 23, 1977, to fill a vacancy, re-elected 1978 and 1982.

JEROME T. HART

14th Senatorial District: County of Saginaw.

Democrat, of Saginaw; born July 23, 1932 at Saginaw; graduate of St. Andrew High School, Saginaw, correspondence courses in accounting through LaSalle University; not married; member St. Andrew Roman Catholic Church and Knights of Columbus (Saginaw); secretary-treasurer Quality Seal Oil Company 1954-60, owner Tiny Town Infant & Children Clothing 1960, secretary-treasurer Catholic Cemetery Commission 1960-62; treasurer Saginaw County Democratic Committee 1956-60, president Saginaw County Democratic Club 1958-60, member Democratic State Central Committee 1959-63, 8th Congressional District Chairman 1962-64 (re-elected in 1974), executive assistant to State Treasurer 1962-64, elected to the State Senate in 1964, 1966, 1970, 1974, 1978 and 1982; January 1975 to December 1982 served as Chairman and Vice Chairman of Capital Outlay Committee, served on the Appropriations Committee since elected to the Senate, currently serves as Senate Chairman of Joint Administrative Rules, served as Democratic Floor Leader of the Senate from December 1973 to January 1975, chairman of Legislative Commission on Courts, co-chairman Joint Committee to Study Abuse in Mental Health Facilities.

PAUL B. HENRY

32nd Senatorial District: County of Kent (part).

Republican, of Grand Rapids; born July 9, 1942 at Chicago; B.A. political science Wheaton College (Illinois), M.A. & Ph.D. political science Duke University; married in 1965, children: Kara Elizabeth, Jordan Mark, and Megan Anne; Christian Reformed; former U.S. Peace Corps volunteer, Ethiopia & Liberia; member Michigan State Board of Education 1975-1978; member American Political Science Association; elected to House of Representatives in 1978, 1980; elected to State Senate in 1982.

DAVID S. HOLMES, JR.

4th Senatorial District: County of Wayne (part).

Democrat of Detroit, born August 11, 1914 at Covington, Kentucky; attended Virginia State College, B.S. Degree; graduate study at the University of Michigan; wife, Avis Greene; one daughter Patricia Ann; employed as a UAW-AFL-CIO aide; member of Allen Temple A.M.E. Church, Detroit; Masons; Alpha Phi Alpha Fraternity; 13th District Business and Professional Men and Women's Club; Trade Union Leadership Council; life member of the NAACP; chairman of the Michigan Democratic Black Caucus; delegate to the 1974 Democratic Charter Conference; elected to the House of Representatives to fill a vacancy in 1959 and re-elected in 1960 to March, 1974. Elected to the Michigan State Senate, March, 1974 to fill a vacancy in the 4th Senatorial District; re-elected in November, 1974 to present; member of Committees: Vice Chairman, Appropriations; Chairman, Subcommittee on Public Health; Chairman, General Government; Vice Chairman, Corrections; Chairman, Capital Outlay; Member, Labor Committee; Chairman, Democratic Caucus; Treasurer, Executive Board of National Black Caucus of State Legislators, Executive Board of the National Conference of State Legislatures, Member of the Conference of Insurance Legislators.

MITCH IRWIN

37th Senatorial District: Counties of Antrim, Charlevoix, Cheboygan, Chippewa, Delta, Emmet, Grand Traverse, Luce, Mackinac, Otsego, and Schoolcraft.

Democrat, of Sault Ste. Marie.

JOHN FRANCIS KELLY

1st Senatorial District: County of Wayne (part).

Democrat, of Detroit. John Francis Kelly was born on Sept. 6, 1949, to Robert Corby Kelly and Margaret Elizabeth Kelly and is the fourth of seven children. He attended St. Matthew's Elementary School in Detroit and Bishop Gallagher High School in Harper Woods. He holds an A.B. with Honors from the University of Michigan, Ann Arbor, 1972, a Master of Public Administration from Wayne State University, Detroit, 1974; and is a candidate for a Ph.D. degree in Political Science having attended Wayne State University 1974-75, 1976-78, and Georgetown University, Washington, D.C., in international relations, 1975-76.

During his graduate studies, John was awarded a University Fellowship, 1976-1978, and taught at the University as an instructor in the Department from 1972 through 1978. John holds a Juris Doctorate from Detroit College of Law, 1983.

John married the former Toni Marie Plotzke of Detroit (Eastern Michigan University, 1972), on May 5, 1972 and they have two children: Rebecca Lynn, age 3, and Dana Marie, age 7. The family are parish members of St. Clare of Montefalco Roman Catholic Church, Grosse Pointe Park, and live in Detroit on Bedford Road.

John enlisted in the United States Army Reserve in 1972 and served four years prior to receiving a Presidential Appointment as a Lieutenant in the Military Intelligence/ASA Branch from 1976 to 1982. He is involved in veterans activities and is a member of the American Legion.

John was elected to serve in the State Senate in 1978 and shortly after taking office was elected by the Democratic Caucus to serve as the Majority Whip. He was re-elected to the State Senate in 1982. He is chairperson of the Committee on Corporations and Economic Development, Vice-Chair of the Committee on Administration, Rules and Elections, and is a ranking member of the Finance and Municipalities Committee. He is also an Alternate member of the Legislative Council.

In the community, John has been a member of several neighborhood and civic organizations including several community organizations, the chairperson of the Advisory Committee of the Community Resource and Assistance Center, the Board of Directors of Eastwood Community Clinics the Detroit Economic Club, the Knights of Columbus, the Detroit Committee on Foreign Relations, the Trade Union Leadership Council, the University of Michigan Alumni Association, the Bishop Gallagher High School Alumni Association, is a member of the Grosse Pointe Civic Association, and is a former member of the Grosse Pointe Jaycees.

JOSEPH S. MACK

38th Senatorial District: Counties of Alger, Baraga, Dickinson, Gogebic, Houghton, Iron, Keweenaw, Marquette, Menominee, and Ontonagon.

Democrat, of Upper Peninsula.

PHILIP O. MASTIN

8th Senatorial District: County of Oakland (part).

Democrat, of Dearborn; born May 27, 1930 at Dearborn; married 1948; children: Mrs. Dawn Massong, Mrs. Cheryl Brown, and Philip O. Mastin III; Pontiac First United Methodist Church; real estate broker; Oakland County Supervisor 1962-1968, Councilman (City of Hazel Park) 1962-1968, Oakland County Commissioner (District 9, Chairman Democratic Caucus) 1969-1970, State Representative (69th District) 1971-1976; member Jaycee International Senate, honorary member Michigan State Planning Officials, member Oakland County Chamber of Commerce, member Mental Health Association in Michigan, member Clinton Valley Center Citizens Advisory Council; elected to Senate in November, 1982.

PATRICK H. McCOLLOUGH

10th Senatorial District: County of Wayne (part).

Democrat, of Dearborn; born May 19, 1942 in Detroit; A.A. Henry Ford Community College, B.A. Michigan State University, M.A. University of Michigan, J.D. Detroit College of Law; married former Sylvia Jean Chappell in 1975; Littlefield Presbyterian Church, Dearborn; attorney; State Senator 1971-1978; re-elected to Senate in November, 1982.

ART MILLER, JR.

27th Senatorial District: County of Macomb (part).

Democrat, of Warren; born July 11, 1946 at Detroit; graduate of Warren High School and Eastern Michigan University; married, children: Holly Ann, Nicole Marie and Art J. Miller, III; Catholic; 3 terms on the Warren Council, Council President and Council Vice President; elected to the Senate on April 19, 1977, November 7, 1978, and November 2, 1982. Chairman, Senate Commerce Committee.

MICHAEL J. O'BRIEN

5th Senatorial District: County of Wayne (part).

Democrat, of Detroit, born Sept. 5, 1942; graduate of Salesian High School, Detroit; attended Michigan State University; member of Michigan Democratic Party, Century Club; Crisis Club of Detroit; Ancient Order of Hibernians; Economic Club of Detroit; Local 2057 AFSC&ME, Wayne County Employees Assn; Mic Mac Athletic Club; 14 years of government service with the Wayne County Road Commission; elected to State Senate to fill a vacancy in a special election, 1974. Re-elected to the State Senate in 1974, 1978 and 1982. Past Chairman of the Tourist Industry Relations Committee, past Chairman of Senate Business Committee, past Chairman State and Veterans Affairs Committee, presently Chairman of State Affairs and Transportation Committee, Vice-Chairman of Corporations and Economic Development Committee, member of the Joint Administrative Rules Committee and Legislative Council; Chairman of the Wayne County Delegation of the Michigan Senate; elected Chairman Senate Democratic Caucus, 1975; elected Assistant Majority Floor Leader 1979; elected Assistant Majority Leader 1983; awarded "Honorary Lay Membership in the Michigan Association of Osteopathic Physicians & Surgeons"; awarded "Contribution to Michigan Construction Award", 1980; "Waymond C. Birdsong Award for Service to Veterans", 1981; "Distinguished Service Award" from Associated Food Dealers, 1981. Certificates of Appreciation from the Michigan Veterans' Trust Fund Board of Trustees, the Polish Legion of American Veterans, and Mother Waddles' Perpetual Mission.

LANA POLLACK

18th Senatorial District: County of Washtenaw (part).

Democrat, of Ann Arbor; born October 11, 1942 at Ludington; B.A. political science University of Michigan 1965, M.A. education University of Michigan 1970; married 1963; son John born 1965; Jewish; teacher of dance, social studies and basic education, political organizer; trustee Ann Arbor Board of Education 1979-1982, manager 1980 2nd Cong. campaign in Washtenaw County, co-manager 1978 18th District state senate campaign, chair Ann Arbor Democratic Party 1975-1977; ACLU Ann Arbor Suzuki Institute, NAACP, NOW, PEER; elected to Senate in November, 1982.

DICK POSTHUMUS

31st Senatorial District: Counties of Kent (part), and Ottawa (part).

Republican, of Lowell, born July 19, 1950 at Hastings; B.S. agricultural economics, public affairs management, Michigan State University; married Pamela Bartz in 1972; children: Krista, Lisa, and Heather; member Hope Church of the Brethren; farmer; third vice-chair Michigan Republican State Central Committee 1971-1973; Alpha Gamma Rho Fraternity; elected to Senate in November, 1982.

WILLIAM A. SEDERBURG

24th Senatorial District: County of Ingham (part).

Republican, of East Lansing, born Aug. 1, 1947; B.S. Mankato State College (Mankato, Minn.), M.A. & Ph.D. Michigan State University; married 1972, son Matthew, daughter Kari; University Lutheran Church; Michigan State Board of Education (secretary 1974); County Commission (Ingham County); Trustee of Michigan Lung Association; Trustee of Michigan Multiple Sclerosis Society; Board of Directors, Lutheran Social Services of Michigan; former national officer of Kappa Delta Pi, chairperson, Ingham County Republican Party; elected to State Senate in 1978.

DAVID M. SEROTKIN

9th Senatorial District: County of Macomb (part).

Democrat, of Mount Clemens; born December 9, 1938 at Pittsburgh, Pa.; Wooster School, AB with honors Princeton University, JD University of Michigan Law School; son David; attorney; State Representative 1967-1972; elected to Senate in November, 1982.

NORMAN D. SHINKLE

11th Senatorial District: Counties of Lenawee, Monroe, and Washtenaw (part).

Republican, of Lambertville; born October 4, 1950 at Toledo, Ohio; graduate Michigan State University 1972, graduate University of Toledo College of Law 1979; married; St. John's Episcopal Church, Temperance; attorney; 2 terms Monroe County Commissioner, 1 term Bedford Township Supervisor; elected to Senate in November, 1982.

NICK H. SMITH

19th Senatorial District: Counties of Branch, Hillsdale, and Jackson.

Republican, of Addison; born Nov. 5, 1934 at Addison; B.A. with honors Michigan State University, M.S. agricultural and economics University of Delaware, Kellogg Foundation "Fellow" 1968; Federal Executive Institute 1972; married to Bonnalyn Atwood, children: Juliana Kaye, Bradley LeGrand, Elizabeth Atwood, and Stacia Kathleen; farmer (dairy, beef and cash crops); radio-TV farm editor WDEL (Wilmington, Delaware) 1957-1959, KSYD Radio (Wichita Falls, Texas 1959-1960), captain/Intelligence USAF 1959-1961, board of directors MFB Insurance Companies, Michigan chairman ASCS United States Dept. of Agriculture, Assistant Deputy Administrator for Programs USDA 1972-1974, chairman National Disaster Agriculture Program Committee, national director USDA Energy Office (Washington, D.C.), member of working group of the Presidential Oil Policy Committee 1972-1974; Somerset Township Trustee 1962-1966, Somerset Township Supervisor, County Board of Supervisors 1966-1968; 4-H leader, squadron cmdr Civil Air Patrol, Masonic Lodge, Trustee, Somerset Congregational Church, Kiwanis, state board of directors Michigan Farm Bureau, trustee Addison Community Hospital, delegate American Assembly on World Population and Hunger, Michigan Occupational Safety Standards Commission, published Motivation Research Study in Agriculture; State Star Farmer — FFA, Michigan State University scholarship, Michigan State University Varsity Club, Blue Key Honorary, Commandant's Award for Scholastics — USAF, Kellogg Foundation FSHP, selected "Outstanding Young Men of America" 1970, presented National Superior Service Unit Award for work as director of Energy Office USDA 1974; Hillsdale County Republican Chairman; Republican nominee for Michigan State University Board of Trustees, 1976; elected to House of Representatives in 1978 and 1980; elected to Senate in 1982.

JACKIE VAUGHN III

3rd Senatorial District: County of Wayne (part).

Democrat, of Detroit; single; graduate of Highland Park, Hillsdale College, B.A. Oberlin College, M.A., Fulbright Scholar and Fellow, Oxford University, Oxford, England, Oxon B. Litt, (one of the few Americans to receive the State Department's extension of the Fulbright Scholarship for three years); U.S. Navy, yeoman; past president, State Young Democrats, two terms; member and Sunday School instructor, Hartford Memorial Baptist Church; associate member, Central Methodist Church; listed in "Who's Who Among American College and University Students"; elected to ODK (Omicron Delta Kappa) Honor Leadership Society; Elected to Michigan House of Representatives and to Michigan Senate in 1978 and elected President Pro Tem of the Senate. Recipient: Model Legislator Award, Michigan Chronicle; Youth Leadership Award, Rotary International; Alumni Achievement Award, Hillsdale College; Service Award, Jaycees; 1975 Legislator of the Year award, Michigan Osteopathic Society; Honorary Lay Membership, Michigan Association of Osteopathic Physicians and Surgeons; named 1975 Legislator of the Year by the Detroit Medical Society, Wolverine Dental Society, and the Wolverine Medical Society; YMCA 1975 World Ambassador to Russia; Chairman of YMCA Youth in Government program since 1970; and Man of the Year Award, Detroit Urban Center. Invited guest lecturer, Oxford University.

Oxford, England, Trinity and Hilary terms. Granted audience with His Holiness, Pope Paul VI at the Vatican, Rome, Italy, November 1976; also granted audience with His Holiness, Pope John Paul II at the Vatican, October, 1980.

ROBERT A. WELBORN

13th Senatorial District: Counties of Barry, Ionia, Kalamazoo (part) and Montcalm.

Republican, of Kalamazoo; born February 17, 1928 at Kalamazoo; graduated from Kalamazoo Central High School, 1946; Western Michigan University, 1965, B.B.A. degree; married to Jane A. Salomon in 1951; children: Mary Catherine, Barbara Jane and Christopher Thomas; former member Kalamazoo County Board of Commissioners, 1973-74; Chairman, Kalamazoo County Board of Commissioners, 1974; member St. Luke's Episcopal Church, Kalamazoo; military service in Navy, Army and Air Force; member of V.F.W., American Legion, life member Delta Sigma Pi Professional Business Fraternity; life member of Western Michigan University Alumni Association; member of Western Michigan University Alumni Association Board of Directors; elected to the House of Representatives to fill a vacancy in 1974, and re-elected to a second term at same election in 1974; re-elected 1976, 1978 and 1980; elected to Michigan Senate in 1982; member of the Senate Appropriations Committee.