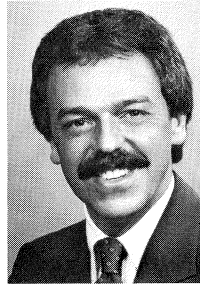
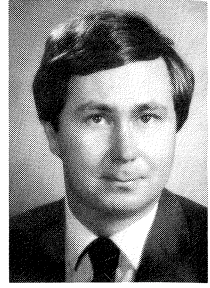


MEMBERS OF THE SENATE



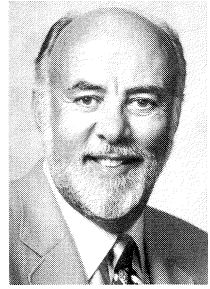
PHILLIP J. ARTHURHULTZ
33rd District



JAMES A. BARCIA
34th District



CONNIE BERUBE BINSFELD
36th District



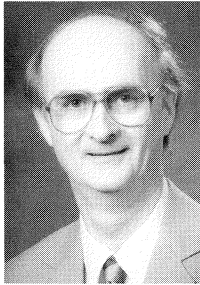
BASIL W. BROWN
2nd District



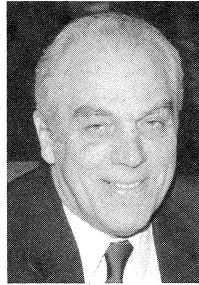
DOUG CARL
9th District



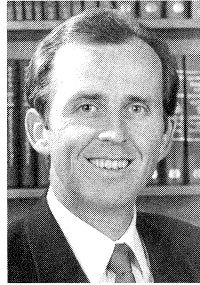
JOHN D. CHERRY, JR.
29th District



JOE CONROY
25th District



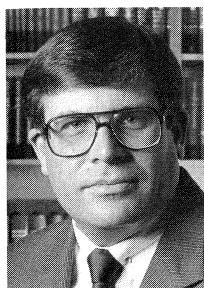
HARMON G. CROPSY
21st District



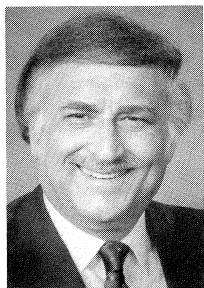
DOUG CRUCE
16th District



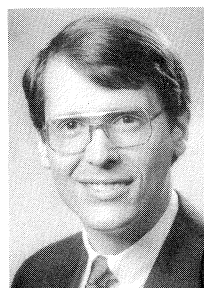
DAN L. DeGROW
28th District



FREDERICK P. DILLINGHAM
30th District



GILBERT J. DINELLO
26th District

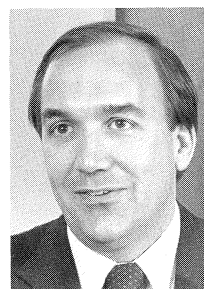


CHRISTOPHER DINGELL
7th District



VERNON J. EHLERS
32nd District

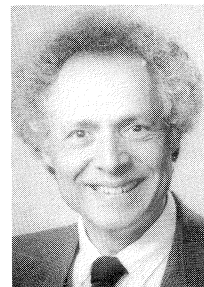
MEMBERS OF THE SENATE



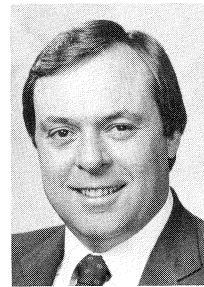
JOHN M. ENGLER
35th District



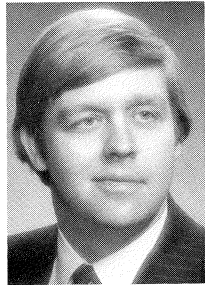
WILLIAM FAUST
12th District



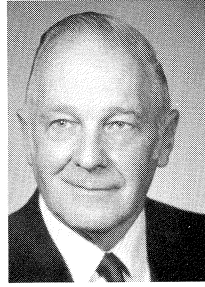
JACK FAXON
15th District



RICHARD D. FESSLER
17th District

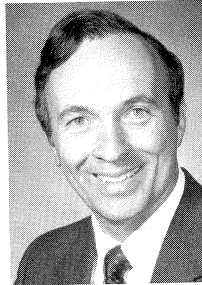


ED FREDRICKS
23rd District



HARRY GAST
22nd District

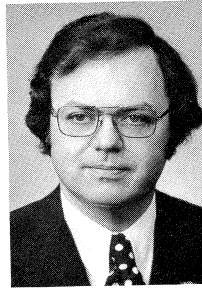
MEMBERS OF THE SENATE



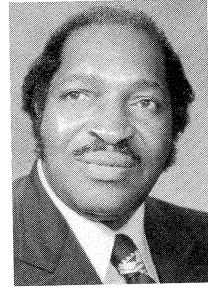
R. ROBERT GEAKE
6th District



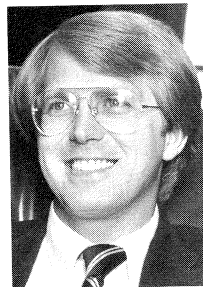
GEORGE ZAVEN HART
10th District



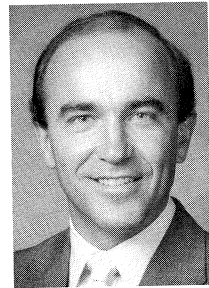
JEROME T. HART
14th District



DAVID S. HOLMES, JR.
4th District



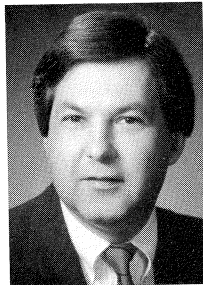
MITCH IRWIN
37th District



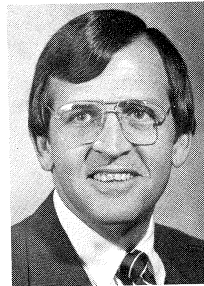
JOHN FRANCIS KELLY
1st District



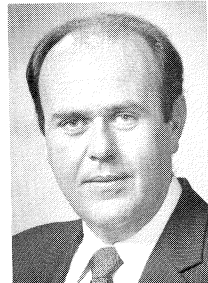
JOSEPH S. MACK
38th District



ART MILLER, JR.
27th District



RUDY J. NICHOLS
8th District



MICHAEL J. O'BRIEN
5th District



LANA POLLACK
18th District



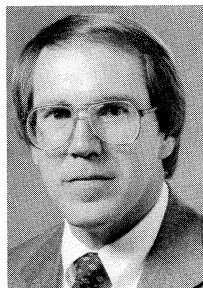
DICK POSTHUMUS
31st District



WILLIS H. SNOW
Secretary of the Senate

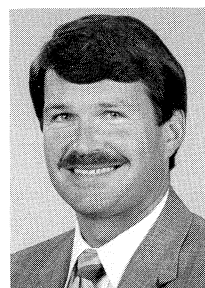


JOHN J. H. SCHWARZ, M.D.
20th District

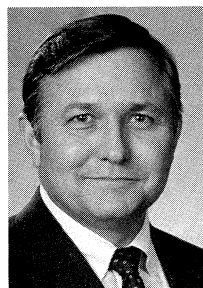


WILLIAM A. SEDERBURG
24th District

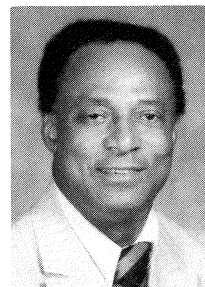
MEMBERS OF THE SENATE



NORMAN D. SHINKLE
11th District



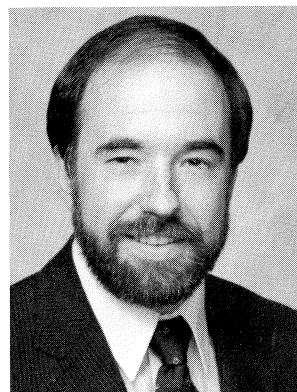
NICK H. SMITH
19th District



JACKIE VAUGHN III
3rd District



JOHN A. WELBORN
13th District



WILLIAM C. KANDLER
Assistant Secretary of the Senate

SENATORS

PHILLIP J. ARTHURHULTZ

33rd Senatorial District: Counties of Mason, Muskegon, Newaygo, and Oceana.

Republican, of Whitehall; born June 16, 1947; single; alumnus Montague Public Schools, 1952-65, Muskegon Community College, 1965-67, Albion College, 1968-71; attended leadership and governmental training courses at Michigan State University and the University of Michigan; Page to Michigan State House of Representatives, 1967-68; Assistant to Congressman Guy Vander Jagt, 1972-73; Director of the Michigan Senate Republican Staff, 1973-78; selected an "Outstanding Young Man of America"; named "Humanitarian of the Year", Michigan Humane Society, 1985; honored as "Legislator of the Year", Michigan Association of Children's Alliances, 1985; member of Farm Bureau, Eagles, Old Newsboys, Urban League, NAACP, and National Rifle Association; elected to the State Senate in 1978, 1982 and 1986; elected Senate Minority Whip, 1979-82; elected Senate Minority Floor Leader, 1983-84; elected Senate Majority Floor Leader, 1984.

JAMES A. BARCIA

34th Senatorial District: Counties of Arenac, Bay, Gladwin, Huron, and Tuscola.

Democrat, Bay City; born February 25, 1952; graduated Bay City Central High School; B.A. Saginaw Valley State College; former community services coordinator Michigan Community Blood Center; former member Saginaw Valley State College Board of Control ex-officio; former staff assistant U.S. Senator Philip Hart; former administrative assistant State Representative Donald Albosta; elected to House of Representatives in 1976 and to each succeeding session; served on the following committees — Colleges & Universities — Conservation, Environment & Recreation — Constitutional Revision & Women's Rights — Corrections — Education — Liquor Control — Tourism Industry Relations — Joint Legislative Subcommittee on Higher Education Issues; past Chair Drainage Committee; past Chair Public Works Committee; Majority Whip; author of the "Whistleblowers' Protection Act". Elected to State Senate 1982; 1984-present: Vice-Chairman Agriculture and Forestry Committee; member Education Committee; member State Affairs, Veterans, and Transportation Committee; Assistant Minority Whip; 1986: Senate Select Committee on Safe Streets; 1987-present: Vice-chairman, Joint Committee on Administrative Rules; member, Committee on Regulatory Affairs.

CONNIE BERUBE BINSFELD

36th Senatorial District: Counties of Alcona, Alpena, Benzie, Crawford, Iosco, Kalkaska, Lake, Leelanau, Manistee, Missaukee, Montmorency, Ogemaw, Oscoda, Presque Isle, Roscommon, and Wexford.

Republican, of Maple City; born Munising April 18, 1924; B.S., secondary education teaching certificate, Siena Heights College (Adrian), graduate study Wayne State University; Honorary Doctor of Humane Letters, Siena Heights College, Northwestern Michigan College Fellow; married John E. Binsfeld in 1947, children: John, Gregory, Susan, Paul and Michael; St. Rita-St. Joseph Church; Grand Traverse Women's Republican Club, League of Women Voters, Glen Lake Women's Club, American Mothers Association, Crooked Tree Council Girl Scouts; two terms Leelanau County Commissioner; named Michigan Mother of the Year 1977; four terms House of Representatives, elected Assistant Republican Leader in 1979 and 1981; elected to State Senate 1982; Assistant Majority Leader during first Senate term; only woman in Michigan history to be elected to both houses of the State Legislature and hold major leadership positions in both; Member, Appropriations Committee; Chair, Appropriations Subcommittee on Public Health; Chair, Appropriations Subcommittee on Transportation; Member, Appropriations Subcommittee on Capital Outlay; Member, Appropriations Subcommittee on Retirement; Member, Appropriations Subcommittee on General Government; Vice Chair, Natural Resources and Environmental Affairs Committee; Vice Chair, State Affairs, Tourism and Transportation Committee.

BASIL W. BROWN

2nd Senatorial District: County of Wayne (part).

Born March 20, 1927, in Vandalia, Michigan, his family moved to Battle Creek, Michigan in 1929. He is a graduate of Battle Creek's Central High School and won varsity

letters in football and track while at Central. A veteran of the United States Navy, he was honorably discharged in 1946 after serving in the China Seas, Okinawa and the Philippines.

He has a Bachelor of Arts Degree from Western Michigan University and both a J.D. and a LL.B. from the University of Michigan Law School. He passed the Michigan State Bar in 1952 and has practiced law since 1953.

Senator Brown is married to Ermajeane Brown, a retired school teacher for the Detroit Public Schools. They have one daughter, Lisa, and a granddaughter, Bianca. His father is deceased. His mother lives in Kalamazoo, Michigan, and is retired from the Veteran's Administration, Fort Custer, Michigan. He has a brother who is a Civil Engineer for the New Jersey State Highway Department.

Elected to the Michigan Senate in 1956. He has been re-elected as State Senator each election since: 1958, 1960, 1962, 1964, 1966, 1968, 1970, 1974, 1978, 1982, and 1986. In 1964-1966, he served as Democratic Majority Floor Leader and Chairman of the Senate Judiciary Committee. He was reappointed Chairman of the Senate Judiciary Committee in 1974 and served as Chairman through January 1984. He is Dean of the Senate, Commissioner of the National Conference of Commissioners on Uniform State Law, Commissioner of the Michigan Commission on Criminal Justice, and an ex-officio member of the Law Revision Commission.

In addition to his legislative duties, Senator Brown is a member of Kappa Alpha Psi Fraternity, the State Bar of Michigan, the Wolverine Bar Association, the American Bar Association, T.U.L.C. and a Life Member of the NAACP.

DOUG CARL

9th Senatorial District: County of Macomb (part).

Republican, of Utica, Michigan; born August 12, 1951 at Almont, Michigan; married 1983; wife, Maria; Romeo High School; B.A. Michigan State University; member Rochester Hills Baptist Church; stockbroker; County Commissioner of Macomb County 1980-82; Sterling Hts. Area Chamber of Commerce; Romeo-Washington Chamber of Commerce; Michigan Council on Alcohol Problems; House of Representatives 1984-1986; elected to the State Senate November 1986.

JOHN D. CHERRY, JR.

29th Senatorial District: County of Genesee (part).

Democrat, of Clio; born May 5, 1951 at Sulphur Springs, Texas; B.A. political science University of Michigan; M.P.A. University of Michigan-Flint; married 8 years, daughter Meghan Michelle, and son, John Daniel; Episcopalian; American Society of Public Administrators, Saginaw Valley Chapter; elected to House of Representatives in November 1982. Elected to State Senate in November 1986.

JOE CONROY

25th Senatorial District: County of Genesee (part).

Democrat, of Flint; born July 24, 1934 at Battle Creek; married 1962 to the former Mary Ann Macksood, children: Colleen 23, Kevin 21, Kelly 20, Tim 19, and Christine 17. A real estate broker and residential builder; Flint Charter Revision Commissioner, Genesee County Commissioner; elected to the House of Representatives in 1976; to the Senate in 1982 and 1986.

HARMON G. CROSEY

21st Senatorial District: Counties of Cass, Kalamazoo (part), and St. Joseph.

Republican, of Cass County; Graduate of Goodenough School, Dowagiac High School, attended M.S.U., graduated Iowa State University, 1938, B.S. in animal science and minor in economics. Member Phi Kappa Phi Honorary Fraternity. 4-H Extension Agent Tama and Benton Counties, Iowa, 1939; Farm manager, Iowa Canning Co. 1940-41. Four years in Navy Air Corps, Pilot and Navigator, flew 43 missions out of England with Bombing Squadron 110, 1943 and 1944, awarded Air Medal and Distinguished Flying Cross.

Married to the former Ruth Marian Lindsay, 1943, six living children: Dr. Robert Crosey, M.D., missionary in Togo, West Africa, David, former State Senator Alan Crosey, Carolyn, George and Lindsay Jo.

Farmed in Iowa 1946-1951. Cass County farmer, active in Farm Bureau and civic affairs.

Served on Board of Geneva School and Lewis Cass Intermediate District. Served two years Michigan Right-to-Life PAC. Presently member of Board of Policy of the American Security Council; member of Friends of Michigan Schools; member Efton Jones Post 206 of American Legion, Cassopolis; member of the Marcellus Post of Veterans of Foreign Wars. Member of the Cass County Historical Society, the Michigan Pork Producers, the National Rifle Association and Volinia Baptist Church.

Elected State Representative August 5, 1981 in Special Election to fill vacancy created when Mark Siljander was elected to Congress. Elected to the State Senate in November 1982 and 1986.

DOUG CRUCE

16th Senatorial District: County of Oakland (part).

Republican, of Troy; born July 1, 1947; graduate Warren High School, BA Wayne State, MA Villanova University; married 1969, wife, Anne, children: Jean, Laura, and Charles; Roman Catholic; U.S. Marine Corps 1966-1969; Troy Jaycees, American Legion, Marine Corps League; elected to the House of Representatives in 1980; elected to the Senate in 1982.

DAN L. DeGROW

28th Senatorial District: Counties of Lapeer, Sanilac, and St. Clair.

Republican, of Port Huron; born June 28, 1953 at Ann Arbor; graduate Port Huron Northern High School 1971, St. Clair County Community College 1971-1973, Michigan State University 1973-1975, Phi Beta Kappa, Wayne State University juris doctor 1975-1978; married Cheryl Simpson, February 7, 1981; one daughter, Allison, and one son, Stephen; Methodist; attorney; NAACP, Association for Retarded Citizens, Republican Party Executive Committee for St. Clair County, State Bar Association of Michigan, St. Clair County Bar Association, American Bar Association; elected to the House of Representatives in 1980; elected to the Senate in 1982 and 1986.

FREDERICK P. DILLINGHAM

30th Senatorial District: Counties of Clinton, Livingston, and Shiawassee.

Republican, of Fowlerville; born January 18, 1948 in Alma, Michigan; graduated from Fowlerville High School; degree in Mortuary Science from Wayne State University, in Political Science from Eastern Michigan University; married 1985, daughters: Kimberly, Kristen, Caroline, Katrina, sons: Kenneth and Robert; St. Agnes Catholic Church of Fowlerville; licensed funeral director, former owner of Dillingham Hardware of Fowlerville; Republican Precinct Delegate, County Executive Committee, staff field representative for Congressman Marvin Esch, four terms Michigan House of Representatives, 1979-1986. Member Livingston County Century Club, member Livingston County Board of Commissioners. Charter President Fowlerville Jaycees, charter member Webberville Jaycees, past member Howell Jaycees, member Fowlerville Rotary Club, Howell Elks Club, Knights of Columbus, Livingston Association for Retarded Citizens, member St. Agnes' Men's Club. Former Catholic lay lector, past Catholic education teacher, former board member Michigan Academy of Dentistry for the Handicapped, Michigan Retail Hardware Association, board member Foster Grandparents, Advisory Board Livingston County Spouse Abuse.

GILBERT J. DiNELLO

26th Senatorial District: County of Macomb (part).

Democrat, of East Detroit; born February 28, 1935 in Detroit; B.S. business administration, University of Detroit; American Institute of Banking; University of Michigan Extension Service in real estate finance, real estate law, real estate appraisal I and II and real estate building; single; commercial real estate broker; former administrative assistant in the commercial and residential mortgage department of Michigan National Bank of Detroit; past precinct delegate; past membership chairman of Macomb County Democratic Committee; served in Michigan Army National Guard; Roman Catholic; member of Executive Board for Macomb County Democratic Committee; 14th Congressional District Committee; Knights of Columbus, Leo XIII, East Detroit; Sons of Columbus, Detroit Council No. 91; Fraternal Order of Eagles, Aerie No. 2495, East Detroit; International Association of Lions Clubs, East Detroit; Club Pacentro; member, National Rifle Association; Americans of Italian Origin Society; Board Member of Project HOPE League; Order of Sons of Italy in

America; New Era Lodge-Detroit #336; The National Italian American Foundation, Washington, D.C.; elected to the House of Representatives in 1972, 1974, and 1976; elected to the State Senate in 1978, 1982, and 1986.

CHRISTOPHER DINGELL

7th Senatorial District: County of Wayne (part).

Democrat, of Trenton; born February 23, 1957; Michigan State University; University of Michigan, Bachelor of Science in Materials and Metallurgical Engineering, 1978; Detroit College of Law, Juris Doctorate, 1986; engineer; single; St. Timothy's Catholic Church; Economic Club of Detroit, Engineering Society of Detroit, Trenton Jaycees, Michigan United Conservation Clubs, Knights of Columbus, Polish Roman Catholic Union, Trenton Exchange Club.

VERNON J. EHLERS

32nd Senatorial District: County of Kent (part).

Republican, of Grand Rapids; born February 6, 1934 at Pipestone, MN; Calvin College 1952-1955, University of California — Berkeley 1955-1956 A.B. and 1956-1960 Ph.D., married to Johanna (Jo) Meulink 1958, children: Heidi, Brian, Marla and Todd; Eastern Avenue Christian Reformed Church member and former elder; physicist, professor; 8 years Kent County Board of Commissioners 1975-1983 (chairman 1979-1982); Sigma Xi, Phi Beta Kappa, American Physical Society, American Association of Physics Teachers, American Association for the Advancement of Science, American Scientific Affiliation, National Science Teachers Association, Michigan Association of Environmental Professionals; elected to House of Representatives in November 1982 and again in 1984. Elected House Assistant Republican Floor Leader for 1983-84 and again for 1985-86 sessions; member of Committees on Colleges and Universities, Conservation and Environment, and Public Health. Author of numerous scientific articles and co-author of three books; elected to the Senate March 26, 1985, to fill vacancy. Chairman of the Senate Public and Mental Health Committee; member of Senate Education Committee; member of Senate Economic Development, Trade, and Tourism Committee; Vice-Chairman of Senate Higher Education and Technology Committee; member of the Social Services and Youth Committee. Elected to second term in the Senate November 1986 (first full term). Elected Assistant President Pro Tempore for 1987-88; member of Education and Mental Health Committee; member of Energy Committee; vice chair of Health Policy Committee and chair of Natural Resources and Environmental Affairs Committee.

JOHN M. ENGLER

35th Senatorial District: Counties of Clare, Gratiot, Isabella, Mecosta, Midland, and Osceola.

Republican, of Mt. Pleasant; born October 12, 1948 at Mt. Pleasant; graduate of Beal City High School and Michigan State University, B.S. in Agricultural Economics, Cooley Law School, J.D.; Honorary Degree, Alma College; delegate, White House Conference on Youth, 1971; recipient of the Distinguished Service to Agriculture award from the Michigan Agriculture Conference; one of the Five Outstanding Young Men award recipients from Michigan Jaycees, 1982; Roman Catholic; member of the Knights of Columbus; Farm Bureau; past member of the Board of Trustees of the Michigan YMCA and Vice Chairman of the State Youth and Government Committee; past member of the Board of Directors of the College of Agriculture and Natural Resources Alumni Association at Michigan State University; President, National Republican Legislators Association; present Senate Majority Leader; elected to the House of Representatives in 1970, 1972, 1974, 1976, and to the Michigan Senate, 1978, 1982, and 1986.

WILLIAM FAUST

12th Senatorial District: County of Wayne (part).

Democrat, of Westland; born March 29, 1929 at Bucyrus, Ohio; attended Indiana University, University of Michigan, A.B. degree, 1952; graduate work at Eastern Michigan University; Nankin Township trustee, 1960-63 and supervisor, 1963-65; elected to the State Senate in 1967, 1971, 1975, 1979, and 1983, elected majority leader 1976; Senate Minority Leader in 1984; resigned leadership position on April 16, 1985.

JACK FAXON

15th Senatorial District: County of Oakland (part).

Democrat, of Southfield; B.S. & M. Ed. Wayne State University, M.A. in history University of Michigan; educator and former teacher in Detroit Public School System; delegate to Michigan Constitutional Convention in 1961-62; commissioner of the Education Commission of the States; member of the Anti-Defamation League; member of the Founder's Society, Detroit Institute of Arts; elected to Michigan House of Representatives 1964, 1966, and 1968, elected to the Michigan Senate in 1970, 1974, 1978, 1982, and 1986.

Among his efforts while serving in the House of Representatives was the establishment of the Michigan Council for the Arts; the development of educational programs as related to drug abuse and smoking; the development and funding of the statewide assessment program in education; an advocate in the area of consumer affairs; a revision of the state's conflict-in-interest laws; and the examination of the Michigan community college system. As a member of the Michigan Senate, he is a member of the Appropriations Committee, Library of Michigan Board of Trustees, and Chairman of the Senate Select Committee for the Advancement of the Creative Arts and Humanities. Sponsor of Arts in Public Places legislation and the sponsor of the "Michigan Clean Indoor Air Act". As an educator Faxon serves as the President/Founder of the International School, a private, non-profit, preschool and K-8.

RICHARD D. FESSLER

17th Senatorial District: County of Oakland (part).

Republican, of West Bloomfield; born Detroit May 17, 1943; Dublin Elementary School (White Lake Twp.), Walled Lake Central High School, Oakland Community College (business, economics, and accounting); B.A. social sciences and English, secondary education Oakland University, Juris Doctorate degree 1972 University of Detroit Law School; married May 8, 1971, children: Richard, Katherine, Robert, and Elizabeth; Protestant; attorney; member: American Bar Association, State Bar of Michigan, and Oakland County Bar Association, member: District Court Committee State Bar Association 1976-78, Michigan Law Revision Commission, Commissioner of the National Conference of Commissioners on Uniform State Laws, president Oakland County Republican Lincoln Club 1975; Assistant Township Attorney for Charter Township of Waterford 1973-74, 1973 Assistant Prosecuting Attorney in Oakland County, and Chief Deputy Treasurer of Oakland County 1972; practicing attorney with offices in Bloomfield Hills; elected to House of Representatives in 1974 and served until 1982; elected to the State Senate in 1982 and 1986; Senate Republican Whip, 1983-present.

ED FREDRICKS

23rd Senatorial District: Counties of Allegan and Ottawa (part).

Republican, of Holland; born in Holland, June 27, 1942; 1964 B.A. in Economics from Calvin College; 1967 M.A. in History, Western Michigan University; 1968 M.A. Sociology, Western Michigan University; 1967 assistant to U.S. Rep. Guy Vander Jagt; 1968 executive director Michigan Citizens for Nixon; 1968 author of book, *MacArthur: His Mission and Meaning*; 1970-72 served as American Vice Consul with the American Embassy, Seoul, Korea; 1972-74 Political Officer, Bureau of International Organization Affairs, U.S. Department of State; 1974 elected to first term in the Michigan House of Representatives; 1976 re-elected to second term; 1978-79 Chairman, Michigan Conservative Union; 1978 elected to Michigan State Senate; re-elected in 1982 and 1986; single; Faith Christian Reformed Church, Holland.

HARRY GAST

22nd Senatorial District: Counties of Berrien and Van Buren.

Republican, of St. Joseph; born September 19, 1920 at St. Joseph; attended St. Joseph Public High School and Michigan State University; married, wife Jean; children: Barbara, Linda, and Dennis; former supervisor, Lincoln Township; former treasurer, Lincoln Township; farmer; former County Board of Public Works and County Board of Health; member of Farm Bureau, Lions, Honorary Jaycees; former member Lakeshore School Board; Baptist; elected to the House of Representatives, 43rd District in 1970, 1972, 1974, 1976, serving on Taxation, Towns and Counties, Conservation and Elections Committees; elected to the

Michigan State Senate, 22nd District in 1978, 1982, 1986; elected Republican Assistant Caucus Chairman; Chairman of Senate Appropriations Committee, Sub-committees: Budget & Oversight, Capital Outlay, Community Colleges, Agriculture, Natural Resources and Environmental Affairs Committee; Legislative Retirement Board of Trustees Committee; Recipient of the 1986 Distinguished Service to Agriculture Award by the Michigan Agriculture Conference; Recipient of the 1986 Legislator of the Year Award by the Michigan Association of Chiefs of Police.

R. ROBERT GEAKE

6th Senatorial District: County of Wayne (part).

Republican, of Northville; born October 26, 1936 at Detroit; B.S. special education, M.A. guidance and counseling, Ph.D. education and psychology, all from University of Michigan; married to the former Carol L. Rens of Grand Rapids, 1962; children: Roger Rens, Tamara Lynne, and William Rens; educational psychologist; elected trustee-at-large Schoolcraft Community College in 1969 and subsequently elected chairman; Presbyterian; National Education Association, life member; American and Michigan Psychological Associations; Northville Rotary Club; several historical and genealogical societies; elected to the House of Representatives in 1972, 1974, and 1976; elected to the Senate on March 23, 1977, to fill a vacancy, re-elected 1978, 1982, and 1986.

GEORGE ZAVEN HART

10th Senatorial District: County of Wayne (part).

Democrat, of Dearborn; born May 13, 1927 at Detroit; graduate of Fordson High School, A.A. Henry Ford Community College, 1949; B.A. Wayne State University, 1951; single; St. Conrad Catholic Church in Melvindale; World War II veteran, Army-Infantry; Dearborn city councilman, 14 years; Wayne County Commissioner, 7 years; elected to State Senate in 1976 and served through 1982, re-elected in 1986; Dearborn Moose, Kiwanis, Goodfellows, Pulaski Civic Organization, Father Patrick O'Kelly Knights of Columbus, Polish Legion of American Veterans #75, American Legion Post #409, Dearborn Democratic Club, Inkster Democratic Club, Melvindale Democratic Club, Melvindale Democrats for Progress, Dearborn Heights Democratic Club, Garden City Democratic Club, 1st Congressional District Democratic Organization, 15th Congressional District Democratic Organization, 16th Congressional District Democratic Organization, 17th Congressional District Democratic Organization, Polish National Alliance, Mason Order, Syria Lodge #566, Fraternal Order of Eagles, recipient of the Michigan "AAA" Steering Wheel award as "Outstanding Legislator" in the field of public safety, for sponsoring child seat safety legislation.

JEROME T. HART

14th Senatorial District: County of Saginaw.

Democrat, of Saginaw; born July 23, 1932 at Saginaw; graduate of St. Andrew High School, Saginaw, correspondence courses in accounting through LaSalle University; not married; member St. Andrew Roman Catholic Church and Knights of Columbus (Saginaw); secretary-treasurer Quality Seal Oil Company 1954-60, owner Tiny Town Infant & Children Clothing 1960, secretary-treasurer Catholic Cemetery Commission 1960-62; treasurer Saginaw County Democratic Committee 1956-60, president Saginaw County Democratic Club 1958-60, member Democratic State Central Committee 1959-63, 8th Congressional District Chairman 1962-64 (re-elected in 1974), executive assistant to State Treasurer 1962-64, elected to the State Senate in 1964, 1966, 1970, 1974, 1978, 1982, and 1986; January 1975 to December 1982 served as Chairman of the Appropriations Committee and Chairman and Vice Chairman of Capital Outlay Committee, currently serves on the Judiciary, Health Policy, and Education & Mental Health Committees.

DAVID S. HOLMES, JR.

4th Senatorial District: County of Wayne (part).

Democrat of Detroit, born August 11, 1914 at Covington, Kentucky; attended Virginia State College, B.S. Degree; graduate study at the University of Michigan; wife, Avis Greene; one daughter Patricia Ann; employed as a UAW-AFL-CIO aide; member of Allen Temple A.M.E. Church, Detroit; Masons; Alpha Phi Alpha Fraternity; 13th District Business and Professional Men and Women's Club; Trade Union Leadership Council; life member of the

NAACP; chairman of the Michigan Democratic Black Caucus; delegate to the 1974 Democratic Charter Conference; elected to the House of Representatives to fill a vacancy in 1959 and re-elected in 1960 to March, 1974. Elected to the Michigan State Senate, March, 1974 to fill a vacancy in the 4th Senatorial District; re-elected in November, 1974 to present; member of Committees: Appropriations; Subcommittee on Public Health; General Government; Corrections; Capital Outlay; Chairman, Democratic Caucus; Treasurer, Executive Board of National Black Caucus of State Legislators, Executive Board of the National Conference of State Legislatures, member of the Conference of Insurance Legislators.

MITCH IRWIN

37th Senatorial District: Counties of Antrim, Charlevoix, Cheboygan, Chippewa, Delta, Emmet, Grand Traverse, Luce, Mackinac, Otsego, and Schoolcraft.

Democrat, of Sault Ste. Marie; born July 8, 1952, at Sault Ste. Marie; Rudyard High School; B.A. Lake Superior State College, additional study at Eastern Michigan University and University of Virginia; past teacher, coach, juvenile counselor, regional planner and administrator; married in 1975 to Cynthia K. Williams, son Jeffrey Mitchel; Roman Catholic, member Knights of Columbus; elected to State Senate in 1978.

JOHN FRANCIS KELLY

1st Senatorial District: County of Wayne (part).

Democrat, of Detroit. John Francis Kelly was born on September 6, 1949, to Robert Corby Kelly and Margaret Elizabeth Kelly and is the fourth of seven children. He attended St. Matthew's Elementary School in Detroit and Bishop Gallagher High School in Harper Woods. He holds an A.B. with Honors from the University of Michigan, Ann Arbor, 1972, a Master of Public Administration from Wayne State University, Detroit, 1974; and is a candidate for a Ph.D. degree in Political Science having attended Wayne State University 1974-75, 1976-78, and Georgetown University, Washington, D.C., in international relations, 1975-76.

During his graduate studies, John was awarded a University Fellowship, 1976-1978, and taught at Wayne State University as an instructor in the Department of Political Science from 1972 through 1978. John holds a Juris Doctorate from Detroit College of Law, 1983, and was admitted to the State Bar in 1984.

John married the former Toni Marie Plotzke of Detroit (Eastern Michigan University, 1972), on May 5, 1972 and they have two children: Rebecca Lynn, age 7, and Dana Marie, age 11; Catholic.

John enlisted in the United States Army Reserve in 1972 and served four years prior to receiving a Presidential Appointment as a Lieutenant in the Military Intelligence/ASA Branch from 1976 to 1982.

John was elected to serve in the State Senate in 1978 and was re-elected in 1982 and 1986. He is a member of the Senate Committees on Judiciary, Health Policy and Government Operations.

In the community, John has been a member of several neighborhood and civic organizations including several community organizations, including the Detroit Committee on Foreign Relations, the Immigration Law Society, and Amnesty International. He is involved in veterans activities and is a member of the American Legion. He is also a captain in the National Guard JAG.

JOSEPH S. MACK

38th Senatorial District: Counties of Alger, Baraga, Dickinson, Gogebic, Houghton, Iron, Keweenaw, Marquette, Menominee, and Ontonagon.

Democrat, of Upper Peninsula.

ART MILLER, JR.

27th Senatorial District: County of Macomb (part).

Democrat, of Warren; born July 11, 1946 in Detroit, Michigan; married to Marsha Ann Miller; two daughters, Holly Ann and Nicole Marie; two sons, Arthur Joseph III and Derek Edward. Graduated from Eastern Michigan University; 3 terms on the Warren City Council (council president and vice-president). Elected to a fourth term of the Michigan Senate on November 4, 1986. Elected Senate Democratic Leader on April 16, 1985 and re-elected Senate Democratic Leader on November 12, 1986.

RUDY J. NICHOLS

8th Senatorial District: County of Oakland (part).

Republican, of Waterford; born August 26, 1945 at Flint; married 1967; wife, Gail, two children, Jason 12 and Jodie 9; Protestant; Bachelor of Arts, 1967, Michigan State University, Juris Doctor, Detroit College of Law; admitted to Bar 1974; Area Chairperson, 19th Congressional District 1981; member Waterford Republican Club 1979 to present; Oakland County Republican Party; Appointments Chairman, 1980-1981, Township Director, 1980, member, 300 Club; Oakland County Chamber of Commerce; North Oakland Community Center; State Bar of Michigan; selected as one of the five Outstanding Young Men of Michigan 1981; Michigan House of Representatives, 20th District 1983; elected to Senate on January 31, 1984.

MICHAEL J. O'BRIEN

5th Senatorial District: County of Wayne (part).

Democrat, of Detroit; born September 5, 1942; married to Patricia Schoals; one son, Michael James H. O'Brien. Graduate of Salesian High School, Detroit; attended Michigan State University; member of Michigan Democratic Party, Century Club; Crisis Club of Detroit; Ancient Order of Hibernians; Economic Club of Detroit; Local 2057 AFSCME, Wayne County Employees Assn.; Mic Mac Athletic Club; 14 years of government service with the Wayne County Road Commission; elected to State Senate to fill a vacancy in a special election, 1974. Re-elected to the State Senate in 1974, 1978, 1982, and 1986. Member of the State Affairs, Tourism and Transportation Committee, Commerce and Technology Committee, Regulatory Affairs Committee, and the Legislative Council; Chairman of the Wayne County Delegation of the Michigan Senate; elected Chairman of the Democratic Caucus 1975; elected Assistant Majority Floor Leader 1979; elected Assistant Majority Leader 1983; elected Assistant Minority Leader, 1984. Awarded "Honorary Lay Membership" in the Michigan Association of Osteopathic Physicians & Surgeons; awarded "Contribution to Michigan Construction Award", 1980; "Waymond C. Birdsong Award for Service to Veterans", 1981; "Distinguished Service Award" from the Associated Food Dealers, 1981; "Walter F. Patenge Award of Public Service" from Michigan State University College of Osteopathic Medicine, 1983; "Humanitarian of the Year Award" from the Michigan Federation of Humane Societies, 1985. Certificates of appreciation from the Michigan Veterans' Trust Fund Board of Trustees, the Polish Legion of American Veterans, and Mother Waddles' Perpetual Mission.

LANA POLLACK

18th Senatorial District: County of Washtenaw (part).

Democrat, of Ann Arbor; born October 11, 1942 at Ludington; B.A. political science University of Michigan 1965, M.A. education University of Michigan 1970; married Henry Pollack, 1963; son, John, born 1965; Jewish; teacher of dance, social studies and basic education, political organizer; trustee Ann Arbor Board of Education 1979-1982; elected to Senate in November 1982.

DICK POSTHUMUS

31st Senatorial District: Counties of Kent (part), and Ottawa (part).

Republican, of Lowell, born July 19, 1950 at Hastings; B.S. agricultural economics, public affairs management, Michigan State University; married Pamela Bartz in 1972; children: Krista, Lisa, Heather and Bryan; member Hope Church of the Brethren; farmer; third vice-chair Michigan Republican State Central Committee 1971-1973; Alpha Gamma Rho Fraternity; elected to Senate in November, 1982.

JOHN J.H. SCHWARZ, M.D.

20th Senatorial District: Counties of Calhoun, Eaton, and Ingham (part).

Republican, of Battle Creek; born November 15, 1937 at Chicago, Illinois; graduated from Battle Creek High School, 1955; A.B. University of Michigan, 1959; M.D. Wayne State University, 1964; married Anne Ennis 1971, daughter Brennan Louise; Catholic; Mayor, city of Battle Creek, 1985-87; Battle Creek City Commissioner, 1979-1987 (re-elected 1981, 1983, 1985); Republican State Committee, 1975-76; Calhoun County Republican Executive Committee, 1974-79. United States Navy, Vietnam, 1965-67; Assistant Naval Attache, U.S.

Embassy, Djakarta, 1966-67; service with Central Intelligence Agency, Southeast Asia, 1968-70. Diplomate American Board of Otolaryngology-Head and Neck Surgery, 1973; American Academy of Otolaryngology-Head and Neck Surgery; Calhoun County Medical Society; Michigan State Medical Society; American Medical Association; The Society of Medical Consultants to the Armed Forces; Fellow American College of Surgeons; Michigan Otolaryngological Society; American Society of Head and Neck Surgery; member, Board of Trustees, Leila Y. Post Montgomery Hospital, 1980-82; President, Calhoun County Medical Society, 1979; Chairman, Professional Division United Way Drive, 1975; President, University of Michigan Club of Battle Creek, 1985; Board of Directors, University of Michigan Club of Battle Creek; Alumni Visiting Committee for Literature, Science and the Arts, University of Michigan, 1986, 1987. Elected to State Senate November 1986.

WILLIAM A. SEDERBURG

24th Senatorial District: County of Ingham (part).

Republican, of East Lansing, born Aug. 1, 1947; B.S. Mankato State College (Mankato, Minn.), M.A. & Ph.D. Michigan State University; married 1972, son Matthew, daughter Kari; University Lutheran Church; Michigan State Board of Education (secretary 1974); County Commission (Ingham County); Trustee of Michigan Lung Association; Trustee of Michigan Multiple Sclerosis Society; Board of Directors, Lutheran Social Services of Michigan; former national officer of Kappa Delta Pi, chairperson, Ingham County Republican Party; elected to State Senate in 1978.

NORMAN D. SHINKLE

11th Senatorial District: Counties of Lenawee, Monroe, and Washtenaw (part).

Republican, of Lambertville, born October 4, 1950; lifetime Bedford Township, Monroe County resident; graduate Temperance-Bedford High School 1968, graduate Michigan State University 1972, President Beta Theta Pi Gamma Psi Chapter 1972; Monroe County Commissioner 1973-76; Bedford Township Supervisor 1976-1978; Toledo Metropolitan Area Council of Governments as Monroe County Representative 1973-1978; Michigan Advisory Commission on Juvenile Justice 1976-1978; graduate University of Toledo College of Law 1979; married to the former Linda K. Pompei of East Detroit 1973, one son, Theodore Michael born August 20, 1986; Chairman Monroe County Republican Party 1978-1982; Secretary of the Michigan Republican Party Executive Committee 1981; re-elect President Reagan Chairman 16th Congressional District; St. John's Episcopal Church, Temperance; elected to Senate in November 1982 and re-elected to a second term in 1986; presently serving second term as Chairman of the Senate of the Senate Finance Committee; Vice Chairman of the Senate Government Operations Committee, member of the Senate Commerce Committee, Senate Majority Caucus Chairman, member of the Select Senate Committee on Ontario-Michigan Relations, member of the Michigan Commission on Uniform State Laws, and Vice Chairman of the Senate Select Committee on Arts. Formerly served on Senate Judiciary Committee and Senate Corporations and Economic Development Committee. Has been Vice Chairman of the Senate Local Government Committee and Senate Commerce Committee.

NICK H. SMITH

19th Senatorial District: Counties of Branch, Hillsdale, and Jackson.

Republican, of Addison; born November 5, 1934 at Addison; B.A. with honors Michigan State University, M.S. agricultural and economics University of Delaware, Kellogg Foundation "Fellow" 1968; Federal Executive Institute 1972; married to Bonnalyn Atwood, children: Juliana Kaye, Bradley LeGrand, Elizabeth Atwood, and Stacia Kathleen; farmer (dairy, beef, and cash crops); radio-TV editor WDEL (Wilmington, Delaware) 1957-1959, captain/Intelligence USAF 1959-1961, board of directors MFB Insurance Companies, Michigan chairman ASCS United States Dept. of Agriculture, Assistant Deputy Administrator for Programs USDA 1972-1974, chairman National Disaster Agriculture Program Committee, national director USDA Energy Office (Washington, D.C.), member of working group of the Presidential Oil Policy Committee 1972-1974; Somerset Township Trustee 1962-1966, Somerset Township Supervisor, County Board of Supervisors 1966-1968; 4-H leader, squadron cmdr Civil Air Patrol, Masonic Lodge, Trustee, Somerset Congregational Church, Kiwanis, state board of directors Michigan Farm Bureau, trustee Addison Community Hospital, delegate American Assembly on World Population and Hunger, Michigan

Occupational Safety Standards Commission, published Motivation Research Study in Agriculture; State Star Farmer — FFA, Michigan State University scholarship, Michigan State University Varsity Club, Blue Key Honorary, Commandant's Award for Scholastics — USAF, Kellogg Foundation FSHP, presented National Superior Service Unit Award for work as director of Energy Office USDA 1974; Hillsdale County Republican Chairman; Republican nominee for Michigan State University Board of Trustees, 1976; elected to House of Representatives in 1978 and 1980; elected to Senate in 1982; selected Legislator of the Year by the Michigan Agriculture Conference, 1985; National Council of State Legislators Agriculture & Food Committee; selected Legislator of the Year by Michigan Harness Horsemen's Association, 1986; appointed to National Joint Council on Food & Agricultural Sciences, 1986.

JACKIE VAUGHN III

3rd Senatorial District: County of Wayne (part).

Democrat, of Detroit; single; graduate of Highland Park, Hillsdale College, B.A., Oberlin College, M.A., Fulbright Scholar and Fellow, Oxford University, Oxford, England, Oxon B. Litt. (one of the few Americans to receive the State Department's extension of the Fulbright Scholarship for three years); U.S. Navy, yeoman; past president, State Young Democrats, two terms; member and Sunday School instructor, Hartford Memorial Baptist Church; associate member, Central Methodist Church; listed in "Who's Who Among American College and University Students"; elected to ODK (Omicron Delta Kappa) Honor Leadership Society; Grand Marshal of the Cotillion Ball; member of the Executive Board, Detroit NAACP; past President Pro Tem of the Senate and now Associate President Pro Tem. Recipient: Model Legislator Award, Michigan Chronicle; Youth Leadership Award, Rotary International; Service Award, Jaycees; Legislator of the Year award, Michigan Osteopathic Society; named Legislator of the Year by the Detroit Medical Society, Wolverine Dental Society, and the Wolverine Medical Society; YMCA 1975 World Ambassador to the Soviet Union; Man of the Year Award, Detroit Urban Center; Outstanding State Senator of the Year, Detroit Urban League Guild; Most Outstanding Legislator of the Year award, Washburn-Ilene Block Club; Humanitarian Award, Michigan AFSCME Council 25; Politician of the Year award, the Rosa L. Gragg Education and Civic Club; highest award from the Gentlemen of Wall Street; Outstanding Service Award, the King David Grand Lodge, A.M. & F.M. and Greater Queen Esther Grand Chapter, Order of the Eastern Star; honorary membership in the Most Worshipful King David and Grand Lodge, A.M. & F.M.; and in an unprecedented and historic action, he was officially "adopted" on October 21, 1984, as an Executive Associate Member of Detroit's oldest and most prestigious women's organization, the Rosa L. Gragg Educational and Civic Club — the first male ever to receive this high honor. Invited guest lecturer, Oxford University, Oxford, England, Trinity and Hilary terms. Alumni Achievement Award, Hillsdale College; Class Agent for Oberlin College Alumni Association; and received honorary doctorates (LL.D.) from Marygrove College, Shaw College, and the Urban Bible Institute at the University of Windsor. Granted audience with His Holiness, Pope Paul VI at the Vatican, Rome, Italy, November 1976; also granted audience with His Holiness, Pope John Paul II at the Vatican, October 1980.

JOHN A. WELBORN

13th Senatorial District: Counties of Barry, Ionia, Kalamazoo (part), and Montcalm.

Republican, of Kalamazoo; born December 20, 1932 at Kalamazoo; graduated from Richland High School; married, 1952; children: Kayla, Kami, John; brother Bob served in Michigan Legislature from 1974-85; Cooper Township Supervisor; Kalamazoo County Board of Supervisors; Kalamazoo Soil Conservation District director; volunteer fireman; chairman of Metro Council; Kalamazoo Townships Assoc. member; Chamber of Commerce Industrial Development committee member; Kalamazoo Republican Executive Committee; 2 years Naval Reserve; Protestant; elected to the House of Representatives in 1972, and to State Senate in 1974; unsuccessful candidate for the 1982 GOP gubernatorial nomination; insurance agent, Welborn Insurance Agency; elected in Special Election August 13, 1985 to fill the vacancy for the 13th Senatorial District; re-elected 1986 for four-year term; Chairman of the Senate Criminal Justice, Urban Affairs and Economic Development Committee.